
PowerMon[®] II

User Manual

for:

VMS[™] Operating Systems

- DEC VAX/VMS
- DEC OpenVMS VAX
- DEC OpenVMS AXP

by:



MT-SE-21/07
21-Jan-99

Copyright© 1995

Licensing Agreement

YOU SHOULD CAREFULLY READ THE FOLLOWING TERMS AND CONDITIONS BEFORE OPENING THE SOFTWARE PACKAGE. YOUR USE OF THE MEDIA ON WHICH THE PROGRAM IS RECORDED INDICATES YOUR ACCEPTANCE OF THESE TERMS AND CONDITIONS. IF YOU DO NOT AGREE WITH THEM, YOU SHOULD IMMEDIATELY RETURN THIS PACKAGE AND YOUR MONEY WILL BE REFUNDED.

LICENSE

You may:

1. Use the program on a single computer.
2. Merge other programs with the program as specified in the enclosed materials for your use on a computer. The program merged with another will continue to be subject to the terms and conditions of this agreement.
3. Transfer the program and license to another party if the other party agrees to accept the terms and conditions of this agreement.

YOU MAY NOT USE OR TRANSFER THE PROGRAM IN WHOLE OR IN PART EXCEPT AS EXPRESSLY PROVIDED IN THIS LICENSE.

YOU MAY NOT MERGE THE PROGRAM WITH ANY OTHER EXCEPT AS EXPRESSLY PROVIDED FOR IN THE LICENSE.

YOU MAY NOT COPY OR MODIFY THE PROGRAM IN WHOLE OR IN PART.

TERMS

The license is effective until terminated. You may terminate it at any time by destroying the diskettes or tape (hereby known as "media") contained in this package. Terminating the license does not eliminate any prior failure on your part to comply with any term or condition of this agreement. You agree further upon termination to destroy the program together with any unpermitted copies, modifications and/or merged portions in any form.

LIMITED WARRANTY

THE PROGRAM AND ENCLOSED MATERIALS ARE PROVIDED "AS IS" WITHOUT WARRANTY OF ANY KIND, EITHER EXPRESSED OR IMPLIED, INCLUDING BUT NOT LIMITED TO THE IMPLIED WARRANTIES OF MERCHANTABILITY AND FITNESS FOR A PARTICULAR PURPOSE. THE ENTIRE RISK AS TO QUALITY AND PERFORMANCE OF THE PROGRAM AND ENCLOSED MATERIAL IS ASSUMED BY YOU.

However, to the original purchaser only, Systems Enhancement Corporation does warrant the media on which the program was recorded to be free from defects in materials and faulty workmanship under normal use and service for a period of thirty (30) days from the date of purchase. If during the thirty (30) day period, a defect occurs, then the media will be replaced without charge to you provided that (1) you have previously sent in your Warranty Registration card or you send proof of purchase and (2) return the defective diskette to Systems Enhancement Corporation. Contact Technical Support for an RMA number and instructions.

LIMITATION OF REMEDIES

Systems Enhancement Corporation's entire liability and your exclusion remedy shall be replacement of the media if you have met the conditions as described under "Limited Warranty".

In no event will Systems Enhancement Corporation be liable to you for any other damages arising out of your use of this program.

OTHER

THIS AGREEMENT WILL BE GOVERNED BY THE LAWS OF THE STATE OF MISSOURI.

YOU ACKNOWLEDGE THAT YOU HAVE READ THIS AGREEMENT, UNDERSTAND IT AND AGREE TO BE BOUND BY ITS TERMS AND CONDITIONS. YOU FURTHER AGREE THAT THIS IS THE SOLE AGREEMENT BETWEEN US AND SUPERSEDES ANY PROPOSAL OR AGREEMENT ORAL OR WRITTEN BETWEEN US RELATING TO THE SUBJECT MATTER.

(Some states do not allow the exclusion or limitation of liability for consequential or incidental damages, so the above limitations may not apply to you.)

Trademarks

PowerMon is a registered trademark of Systems Enhancement Corporation.

AXP, Alpha, DEC, LAT, VAX, & VMS are trademarks of Digital Equipment Corporation.

All other brand and product names are trademarks or registered trademarks of their respective holders

Conventions Used In This Guide

This guide uses these type style conventions:

Italic print, as shown in this example, indicates chapter or section names in this guide, screen names, or is used for emphasis.

Bold italic print, as shown in this example, indicates field names or menu items in the software, or is used for emphasis.

Bold print, as shown in this example, indicates filenames, directories, or items to be typed exactly as they appear.

Italic print words or letters in braces { } indicate values that must be supplied by the user. For example: **show term** {port}

Italic print words or letters in brackets < > indicate keys to press. If two keys are separated by a + plus symbol, then the first key should be pressed and held down while pressing the second key. For example: <ctrl+a>

Note: Notes contain important information set off from the text.

Warning: Warning messages alert you to a specific procedure or practice which, if not followed correctly, could cause serious personal injury.

Table of Contents

Introduction	1
Power Monitor	1
Control Center	2
Getting Started.....	5
System Requirements.....	5
Using the Control Center.....	5
Installation & Configuration	7
Setting-Up the Serial Port.....	7
Terminal Servers.....	7
Terminal Characteristics	8
Installing the UPS Interface Cable	9
Extracting PowerMon II.....	10
For Tapes	10
For 3½" Diskette.....	11
For CD-ROM.....	12
The Install Command Procedure.....	13
Configuring During Installation	13
Configuration Code	14
UPS Port Device	14
Device for Diagnostic Output	14
Shutdown Timer	15
Polling Interval.....	15
IO Timeout Value.....	15
Starting Delay	15
Enable Battery Backup Message Broadcasting	16
✦ Wait Before First Broadcast.....	16
✦ Interval Between Broadcasts	16
Enable Dial Out On Events	16
✦ Dial Out On AC Fail.....	17
✦ Dial Out On Low Battery.....	17
✦ Dial Out On Shutdown.....	17
✦ Dial When Timer Reaches	17
Print or Reinitialize Existing Log File.....	18
✦ View Log File	18

- ✦ Print Existing Log File18
- ✦ Printer Name19
- ✦ Reinitialize the Log File19
- ✦ File name to move log file to19
- Using the Control Center.....20**
 - Configuration.....20
 - Power History.....21
 - Log Options.....22
 - View Log File22
 - Print Existing Log File.....22
 - Printer Name.....22
 - Reinitialize the Log File.....23
 - File name to move log file to.....23
 - Activation23
 - Termination.....23
 - Removal.....23
 - Exit PowerMon II Menu.....23
- PowerMon II Files & Procedures24**
 - PowerMon II Files.....24
 - Customizing Messages & Procedures.....27
 - Dialing Out on Power Events27
 - Power Fail.....27
 - Power Restore.....27
 - Shutdown.....28
- Testing PowerMon II Operation30**
- Trouble Shooting32**
 - Pre-installation Checklist32
 - Installation Checklist32
 - Common Problems & Solutions33
 - Serial Port Testing.....35
 - Serial Port Test Results.....37
- Serial Adapter Guidelines38**
- Placing a Technical Support Call.....40**

Introduction

PowerMon II is a power monitoring software package that allows UPS monitoring in VMS environments. There are two parts to this package; the power monitor, and the control center. The power monitor is a background process which monitors the UPS, logs power history data, and alerts users of power events. The control center allows the user to configure the monitor, and view the power history of the UPS.

Power Monitor

The power monitor communicates through a cable attached to a serial port on the computer, and the interface on the UPS. Through this cable, the monitor checks the power status of the UPS (such as battery warning, power fail, power restored, and low battery).

If the monitor detects a utility power failure, it activates a user-specified timer. The monitor notifies all users logged on that the system is functioning on battery back-up. (Users can recognize the possibility of a system shutdown then save their work and log off of the system.)

During a utility power failure, the monitor is able to detect power restoration and revert back to normal monitoring. The monitor will notify users that utility power has been restored.

If the user-specified timer expires and power is still not restored, or if the UPS batteries reach a low state, users are notified of the shutdown, then shutdown of the system begins.

PowerMon II will also report a battery warning, when the UPS reports low battery when utility power is present. This feature allows a system administrator to be informed of a potential problem with the UPS.

Control Center

The control center allows the user to configure the monitor, view the power history graph, view/print the event log, and activate, terminate, or remove PowerMon II.

A Power History Graph allows you to view power activity. You enter the starting date, and PowerMon II graphs the activity for the following 31 days. A demonstration graph is available, if no power events are recorded.

All power events are recorded in a power event log file. You can view this log file from within PowerMon II, or with any text file editor/viewer. You can also print the power event log file.

PowerMon II includes user modifiable command procedures for dialing out upon utility power failure, low battery, and shutdown timer expiration. You must provide the method for dialing out.

Broadcast messages are user modifiable. In addition, you can customize how PowerMon II broadcasts messages modifying command procedure files.

PowerMon II also allows you to perform custom routines in the event of power failure, power restoration, & shutdown timer expiration or low battery.

If you have any questions and or recommendations regarding this installation guide, please bring them to the attention of our Technical Support Department.

 **REMEMBER** 

Don't forget to mail your PowerMon II registration card, it is your proof-of-purchase.

 **NOTE** 

If you have any questions about PowerMon II or other products from Systems Enhancement Corporation, please contact us at:

**World Headquarters
Systems Enhancement Corporation**

174 Chesterfield Industrial Blvd.
Chesterfield, MO 63005 USA

Telephone: (314) 532-2855

Fax: (314) 532-2037

E-mail: sales@sechq.com

World-Wide-Web: <http://www.sechq.com>

For Technical Support, see the section titled, **Placing a Technical Support Call.**

Getting Started

System Requirements

PowerMon II VMS Packages support systems running:

- DEC VMS (Ver. 5.4+)
- DEC OpenVMS VAX (Ver. 6.0+)
- DEC OpenVMS AXP (Ver. 6.1+)

If your version of VMS or Open VMS is earlier than the versions listed above, PowerMon II program may need to be relinked. This is described in the installation section.

This software may not be upward compatible with some operating systems.

PowerMon II requires one dedicated RS-232 serial port on your computer, or a terminal server port on the LAT.

Using the Control Center

Follow key sequences listed on each screen to perform specific operations.

There are two different types of fields: free-form fields, where the user types in the desired value, and limited option fields, where a pop-up window is displayed and the user chooses the desired option.

The following keys perform the following functions in free-form fields:

<enter> or <~> will move the cursor to the next field or to the first field, if the cursor is on the last field. (When the cursor is moved down a field, the input will be validated. If incorrect entries are made, error messages will be displayed in the lower left portion of the screen.)

< - > or < *ctrl+u* > will move the cursor the previous field or to the last field, if the cursor is on the first field.

The following keys perform the following functions in limited option fields:

< *~* > or < *ctrl+d* > will move the cursor to the next option in the pop-up window or to the first option if the cursor is currently on the last option.

< - > or < *ctrl+b* > will move the cursor to the previous option in the pop-up window or to the last option if the cursor is currently on the first option.

< *enter* > will select the option the cursor resides on and move to the next configuration field.

< *ctrl+u* > will exit the pop-up window and move the cursor to the previous configuration field.

Note: Because of differences in terminal emulators, < *~* > does not work on all terminals. In free-form fields, use < *enter* > to move to the next field; and in limited options fields, use the < - > to loop through the options.

During configuration, the following keys have the following functions for any fields:

< *HELP* > or < *F15* > or < *ctrl+a* > will display help text describing the current field.

< *ctrl+w* > or < *ctrl+r* > will repaint the screen.

< *F8* > or < *ctrl+e* > will validate all inputs, save the parameters and start monitoring the UPS.

< *F11* > or < *ctrl+n* > will exit the configuration program without saving any changes, and PowerMon II will not start.

A working knowledge of VMS is necessary for completing the installation procedures.

Installation & Configuration

Installation and configuration consists of the following:

- Setting up the serial port
- Installing the communications cable
- Extracting PowerMon II
- Running the install command procedure
- Configuring PowerMon II during installation

Setting-Up the Serial Port

You can set-up PowerMon II to communicate through a port directly on the computer, or through a terminal server. If you are using a port directly on your computer, skip down to **Terminal Characteristics**.

Terminal Servers

The following steps must be done to set up the terminal server port. This is only an example, your system may vary. The following commands are for a DECserver 200. Your commands may differ.

Note: If you are using a DEC terminal server with an MMJ connector, Digital Part Number *H8571-D* is required. This adapter will convert a DB25 to an MMJ connection.

- In LATCP (Local Area Transport Control Protocol), create and set up a port. The port name must start with LTA (We have used **LTA999**, **port_1**, and **server_1** in the following example).

```
$ mcr latcp
latcp> create port lta999
latcp> set port lta999/application/port=port_1/node=server_1
latcp> exit
```

For some terminal servers, it may be necessary to do a **define** as well as the **set** in order to store the changes in the permanent database.

- Login to the terminal server either on another terminal on the same server, through TSM (Terminal Server Manager), or through NCP (Network Control Program). Set the **access** on the port to **remote**.

```
LOCAL> set priv {give password}
LOCAL> define port 1 access remote
LOCAL> logout port 1
```

Next, set-up the terminal characteristics for the port.

Terminal Characteristics

PowerMon II requires that the RS-232 connector be plugged into a terminal port it can allocate. To view the current terminal characteristics for the port, type:

```
show terminal {port} <enter>
```

Note: The following port set-up is **only** an example. The number of terminal characteristics listed for your system may vary.

```
$ sho term opal
Terminal: _OPA1:      Device_Type: Unknown      Owner: No Owner

  Input:   2400      LFfill:  0      Width:  80      Parity: None
  Output:  2400      CRfill:  0      Page:   24

Terminal Characteristics:
Interactive      Echo              No Typeahead     No Escape
No Hostsync     TTsync           Lowercase        No Tab
Wrap            Scope            No Remote        No Eightbit
No Broadcast    No Readsycn     No Form          Fulldup
No Mdem         No Local_echo   No Autobaud      Hangup
No Brdcstnxb   No DMA          No Altypeahd     Set_speed
No Commsync     Line Editing     Overstrike editing No Fallback
No Dialup       No Secure server No Disconnect     Pasthru
No Syspassword No SIXEL Graphics No Soft Characters No Printer Port
Numeric Keypad  No ANSI_CRT     No Regis         No Block_mode
No Advanced_video No Edit_mode    No DEC_CRT       No DEC_CRT2
No DEC_CRT3     No DEC_CRT4     No DEC_CRT5      No Ansi_Color
VMS Style Input

$
```

To prevent the **<logout>** process from allocating the port, that port should have the terminal characteristic **No Typeahead**.

If you are setting-up a port on a terminal server, the terminal characteristic **No Wrap** should be set, instead of **Wrap**.

You need to set the terminal characteristics of the port you choose, to the characteristics listed in the example. To change the terminal characteristics, type the following command. Include terminal characteristics you need to change.

```
set terminal/permanent/notype_ahead/noautobaud-
/nobroadcast/pasthru/speed=2400/wrap {port} < enter >
```

Note: The *set terminal* command line should be entered into the command procedure **sys\$manager:systartup_v5.com**, **systartup_vms.com**, or the appropriate command procedure, so that the appropriate port characteristics get set at system reboot.

Verify that no process has the port allocated by typing:

```
show terminal {port} < enter >
```

If the **owner** is not **No Owner**, that process must release the port before installation may continue.

Once PowerMon II starts, the **owner** will become **PowerMon_II** the **username** will become **SYSTEM**. Also, the terminal characteristic **type_ahead** will be turned on.

Installing the UPS Interface Cable

Follow the directions in your UPS manual for installing your UPS, and charging the batteries.

- Connect the end of the cable marked "CPU" to the serial port on your computer.
- Connect the other end of the cable to the interface port of your UPS.

Note: The cable supplied in this package **must** be used. It is designed for your specific UPS and should connect to your UPS's interface port exactly. The computer end of the supplied cable may be adapted to your serial port by way of an RS-232 serial adapter. Guidelines on adapters are listed near the end of this manual.

Extracting PowerMon II

Login to the system as the system manager.

Set the logical variable `ups$dir` to the directory that PowerMon II will be installed in. You can install it in any directory you wish. For example, to install it in the `sys$manager` directory, type:

```
assign/system sys$manager: ups$dir < enter>
```

Note: This line should also be added to the appropriate startup command procedure after the terminal characteristics have been set as discussed previously.

For Tapes

- Set the default directory to the directory you specified in the above assign command:

```
set default ups$dir < enter>
```

- Place the tape in the appropriate drive on your system, and mount the media, using the appropriate device name.

```
mount/foreign mua0: < enter>
```

(`mua0:` is used only as an example. Your device name may be different.)

- Files are stored on the tape in a backup saveset. If the system being installed on is an ALPHA/AXP running OpenVMS, enter the command:

```
backup/log mua0:ups_axp.bck/save ups$dir: < enter>
```

If your system is a VAX running VMS or OpenVMS, enter the command:

```
backup/log mua0:ups_vax.bck/save ups$dir: < enter>
```

- **For VAX/VMS versions earlier than 5.4 and/or Open VMS AXP earlier than 6.1:** You may need to relink the executables. The object files and command procedure needed to relink the executables are on a separate saveset on the tape.

If your system is an ALPHA/AXP running OpenVMS, enter the commands:

```
backup/log mua0:bld_axp.bck/save ups$dir: < enter>
```

```
@ups_link_axp < enter>
```

If your system is a VAX running OpenVMS or VMS, enter the commands:

```
backup/log      mua0:bld_vax.bck/save      ups$dir:
< enter>
@ups_link_vax < enter>
```

This will link a new version of the executables to run on your version of the system. It will also remove the object files that were used to relink. Once this is finished, you may delete the **ups_link*.com** files from the **ups\$dir** directory.

- Dismount the tape device:
dismount mua0: < enter>

For 3½" Diskette

The diskette contains the PowerMon II software for OpenVMS Alpha/AXP systems.

- Place the diskette in the appropriate drive on your system, and mount the media using the appropriate device. For example:
mount dva0: UPS < enter>
- Set the default directory to the diskette drive:
set default dva0:[000000] < enter>
- Copy the **ups_axp.bck** file to the directory you previously assigned to the logical variable **ups\$dir**. Enter the command:
copy ups_axp.bck ups\$dir: < enter>
- Set the default directory to the directory to which you copied the file:
set default ups\$dir: < enter>
- The files are saved in a backup saveset. Enter the following command to extract the files from this saveset:
backup/log ups_axp.bck/save ups\$dir: < enter>
- Dismount the diskette drive:
dismount dva0: < enter>

For CD-ROM

The CD-ROM contains the PowerMon II software for OpenVMS and VMS systems.

- Place the CD-ROM in the appropriate drive on your system, and mount the media, using the appropriate device. For example:

```
mount dka400: UPS <enter>
```

- Set the default directory to CD-ROM drive:

```
set default dka400:[000000] <enter>
```

- Copy the appropriate file to the directory you previously assigned to the logical variable **ups\$dir**:

If your system is an ALPHA/AXP running OpenVMS, enter the command:

```
copy ups_axp.bck ups$dir: <enter>
```

If your system is a VAX running OpenVMS or VMS, enter the following command:

```
copy ups_vax.bck ups$dir: <enter>
```

- Set the default directory to the directory that you copied the file to:

```
set default ups$dir: <enter>
```

- Files are stored in a backup saveset specific to your type of system.

If your system is an ALPHA/AXP running OpenVMS, enter the following command to extract the files from this saveset:

```
backup/log ups_axp.bck/save ups$dir: <enter>
```

If your system is a VAX running OpenVMS or VMS, enter the following command to extract the files from this saveset:

```
backup/log ups_vax.bck/save ups$dir: <enter>
```

- **For VAX/VMS versions earlier than 5.4 and/or Open VMS AXP earlier than 6.1:** You may need to relink the executables. The object files and command procedure needed to relink the executables are on a separate saveset on the CD-ROM.

If your system is an ALPHA/AXP running OpenVMS, enter the commands:

```
copy dka400:[000000]bld_axp.bck ups$dir: <enter>
backup/log bld_axp.bck ups$dir: <enter>
@ups_link_axp <enter>
```

If your system is a VAX running OpenVMS or VMS, enter the commands:

```
copy dka400:[000000]bld_vax.bck ups$dir: <enter>
backup/log bld_vax.bck ups$dir: <enter>
@ups_link_vax <enter>
```

This will link a new version of the executables to run on your version of the system. It will also remove the object files that were used to relink. Once this is finished, you may delete the **ups_link*.com** files from the **ups\$dir** directory.

- Dismount the CD-ROM device:

```
dismount dka400: <enter>
```

The Install Command Procedure

When PowerMon II is run, it creates a detached process and runs in that process. When initially created, **sys\$manager:sylogin.com** and the user's login (if run from any user account) will be executed. To avoid execution of the commands in either of these files, add the following line to the top of any relevant command procedures:

```
$ If f$mode() .eqs. "OTHER" then exit
```

To initially install the program and to enter configuration information as described in the following pages, verify that the current directory is the one specified in **ups\$dir**, and type:

```
@ups_install <enter>
```

Configuring During Installation

After the install utility has moved the files to their proper location, the following configuration screen will appear:

opa0 < enter >

Default setting: NONE

Shutdown Timer

This setting specifies how long the software will wait after detecting a power failure, before starting the shutdown sequence. Enter the desired time in minutes. It is important to choose a time-out period that will give the users enough time to close their current application(s) and log out of the system without exhausting the UPS battery supply. See your UPS manual for guidelines on battery life. If the UPS battery runs low before this timer expires, shutdown will begin immediately, disregarding the timer.

Default setting: 180 seconds

Valid range: 1-7200 seconds

Polling Interval

This selection will indicate to the software how often to poll the UPS for data.

Default setting: 1 second

Valid range: 1-60 seconds

IO Timeout Value

The length of time, in seconds, to wait for a response from the UPS, before PowerMon II assumes that there is a communication failure. The default setting should eliminate problems on most systems. Do not change this parameter unless you are experiencing communication failures. This parameter is generally used when the serial port is located on a terminal server.

Default setting: 5 seconds

Valid range: 2-60 seconds

Starting Delay

Enter the number of seconds to wait after the computer is booted before automatically activating the monitor.

Default setting: 120 seconds

Valid range: 0-7200 seconds

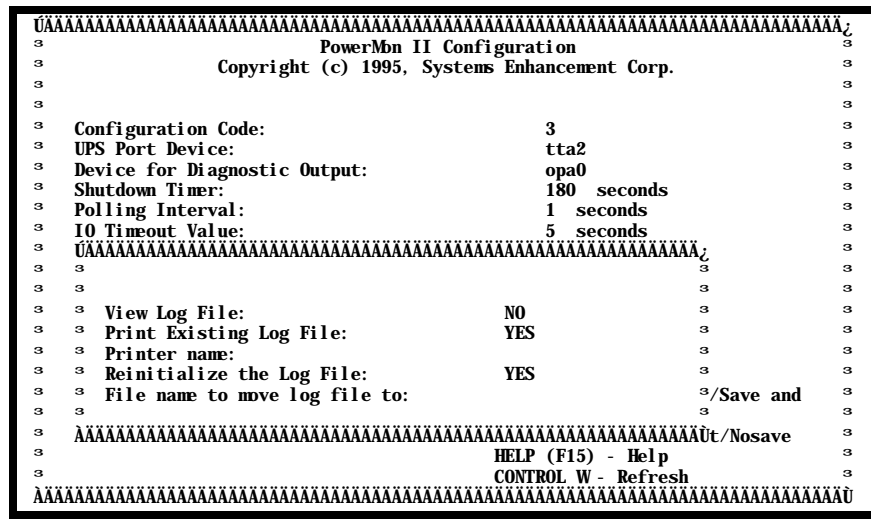
Indicates how long before shutdown to wait before executing the dial out command procedure. This option is only available when *Dial Out On Shutdown* is set to YES.

Default setting: 10 seconds

Print or Reinitialize Existing Log File

This field will show up only after a log file has been created. Choose "YES" or "NO" to indicate whether to perform operations on the existing log file. When <enter> is pressed with "YES" chosen, a window prompting for specific actions will be displayed.

Default setting: NO



- ✦ **View Log File**
Choose this option to view the power event log on screen.
Default setting: NO

- ✦ **Print Existing Log File**
Choose this option to print the current power event log file on the printer of your choice.

Default setting: NO

✦ **Printer Name**

This field identifies the log file printer. This option is only available when Print Existing Log File is set to YES.

Default setting: NONE

✦ **Reinitialize the Log File**

Choose this option to backup the existing log file, and create a new one.

Default setting: NO

✦ **File name to move log file to**

This field identifies name that the existing log file will be renamed to. This option is only available when Reinitialize the Log File is set to YES.

Default setting: NONE

Once you are finished making changes to the configuration parameters, save the changes. See *Testing PowerMon II Operation*.

Using the Control Center

The Control Center application allows you to interface with the power monitor. To run the Control Center:

- Login to the system as the system manager
- Set the default directory to the directory you originally specified in the `ups$dir` logical variable. You may need to re-assign the value to `ups$dir`.

```
set default ups$dir <enter>
```

- Start the Control Center by typing:

```
run upsmenu <enter>
```

The following Control Center screen will appear:

```

UAAAAAAAAAAAAAAAAAAAAAAAAAAAAAAAAAAAAAAAAAAAAAAAAAAAAAAAAAAAAAAAAAAAA,
3
3      PowerMn II
3      The Power Manager
3AAAAAAAAAAAAAAAAAAAAAAAAAAAAAAAAAAAAAAAAAAAAAAAAAAAAAAAAAAAAAAAAAAAA3
3
3      1 PowerMn II Configuration
3      2 PowerMn II Power History
3      3 PowerMn II Log Options
3      4 PowerMn II Activation
3      5 PowerMn II Termination
3      6 PowerMn II Removal
3      9 Exit PowerMn II Menu
3
3AAAAAAAAAAAAAAAAAAAAAAAAAAAAAAAAAAAAAAAAAAAAAAAAAAAAAAAAAAAAAAAAAAAA3
3      Use arrow keys to highlight item then press
3      the <Enter> key to select it. Or press the
3      number of the item you wish to select.
3      CONTROL W - Repaint the screen.
3      HELP (F15) - Help
3AAAAAAAAAAAAAAAAAAAAAAAAAAAAAAAAAAAAAAAAAAAAAAAAAAAAAAAAAAAAAAAAAAAAU

```

Configuration

Choose this option to reconfigure PowerMon II. A description of each item in the configuration screen is listed in the **Installation & Configuration** section, under **Configuring During Installation**.

- **Reinitialize the Log File**

Choose this option to backup the existing log file, and create a new one.

Default setting: NO

- **File name to move log file to**

This field identifies name that the existing log file will be renamed to. This option is only available when **Reinitialize the Log File** is set to YES.

Activation

Choose this option to start up the PowerMon II background monitor.

Termination

Choose this option to stop/disable the currently running PowerMon II background monitor.

Removal

Choose this option to COMPLETELY remove all of the PowerMon II files from your system. If you want to execute PowerMon II again, you will need to reinstall the software. To stop the current PowerMon II background process, choose **Termination**.

Exit PowerMon II Menu

Choose this option to exit to the prompt. The background monitor, if running, will not be effected.

PowerMon II Files & Procedures

PowerMon II Files

Once PowerMon II is installed, the following files will be found in the **ups\$dir** directory. Each file name is followed by a short description of the file.

- **ups_kill.com**
A command procedure used to find and terminate active PowerMon II processes.
- **ups_logprt.com**
A command procedure called to print the PowerMon II status log file. It can be modified to change the method used to print.
- **upsmenu.exe**
The executable PowerMon II control center program.
- **ups_brdcast.com**
A command procedure used to broadcast PowerMon II messages to users. The actual broadcast "reply" command is in this file, and can be modified.
- **ups_check.com**
A command procedure that can be used to check the current status of the UPS, the current shutdown timer, and the PowerMon II software.
- **upsconf.exe**
The executable PowerMon II configuration program.
- **ups_config.com**
A command procedure used to invoke the executable PowerMon II configuration program.
- **ups_dial.com**
A command procedure used to dial out upon events. It allows you to invoke a user defined dial out routine. You must provide the method for dialing.

- **ups_fail.com**
A command procedure invoked by PowerMon II when it detects a utility power failure.
- **upsgraph.exe**
The executable PowerMon II history graph program.
- **ups_halt.com**
A command procedure invoked by PowerMon II when it detects a low battery, or when the time-out period expires. It contains the actual shutdown command, which can be modified for your particular system.
- **ups_install.com**
A command procedure used to install PowerMon II.
- **upslogfl.exe**
The executable PowerMon II log file options program.
- **ups_remove.com**
A command procedure used to remove all PowerMon II files from the system.
- **ups_rest.com**
A command procedure invoked by PowerMon II when it detects utility power restoration.
- **ups_run.com**
A command procedure used to invoke PowerMon II.
- **status.ups**
This text file contains a value which indicates the last reported state of the UPS, and the current shutdown timer. Running **ups_check.com** will list the contents of this file. The value could be:
 - 1 - Normal Power
 - 2 - Battery Backup
 - 3 - Normal Power/Battery Weak
 - 4 - Low Battery/Shutdown
- **down_log.ups**
The log of processes that were active when PowerMon II shutdown the system.
- **demo_log.ups**
The demonstration log file used for the PowerMon II power history graph, if no actual history log file was located.

- **configure.ups**
This text file contains the answers to the PowerMon II configuration questions.
- **error_log.ups**
PowerMon II keeps a raw account of system/error messages in a separate **error_log.ups** file. If PowerMon II should fail to startup, review this file. Each power event is recorded in **event_log.ups** file, which continuously keeps track of all power events.
- **powermon_ii.exe**
The executable power monitor program that runs as a background process to monitor the UPS status and conditions.
- **event_log.ups**
PowerMon II continuously logs all event messages into this text file. You can view this file from the control center or any other text file viewing utility. If you wish to clear the log file, you can use the log options selection in the PowerMon II application, or erase it, and PowerMon II will generate a new file.
- **fail_msg.ups**
The text file that contains the message that is broadcast to users when a utility power failure event occurs.
- **rest_msg.ups**
The text file that contains the message that is broadcast to users when a utility power restoration event occurs.
- **shut_msg.ups**
The text file that contains the message that is broadcast to users to notify them of imminent system shutdown.
- **graph_log.ups**
The PowerMon II power history graph log file.

Customizing Messages & Procedures

The PowerMon II package includes user-modifiable message text files and event command procedures. These text files and command procedures are used when PowerMon II detects changes in the state of the power supply.

Dialing Out on Power Events

In order to dial out on events specified during configuration, PowerMon II requires that you create a method to dial out on your modem. PowerMon II provides a command procedure that can be invoked on specified events, called **ups_dial.com**. Modify **ups_dial.com** to include the dial out commands for your modem.

Power Fail

The power failure command procedure is invoked when PowerMon II detects a power failure. Place any special commands that you want executed in **ups_fail.com**.

fail_msg.ups contains the message that is optionally broadcast to users. Edit **fail_msg.ups** to create your own warning message.

Power Restore

The power restoration command procedure is invoked when PowerMon II detects power restoration. Place any special commands in **ups_rest.com**.

rest_msg.ups contains the message that is optionally broadcast to users. Edit **rest_msg.ups** to create your own notification message.

Shutdown

The shutdown command procedure is invoked after PowerMon II detects a low battery warning, or the shutdown timer expires. Place any special commands in **ups_halt.com**.

shut_msg.ups contains the message that is optionally broadcast to users. Edit **shut_msg.ups** to create your own warning message.

Note: When modifying PowerMon II command procedure files, be careful not to introduce delays, in the actual sequence, without ensuring that your UPS system will provide power, long enough to complete the command procedure. Otherwise, you run the risk of losing power before the computer is shutdown.

Testing PowerMon II Operation

When PowerMon II detects changes in the state of the UPS, it displays messages to the *device for diagnostic output*. These messages include:

"xx/xx/xx xx:xx:xx PowerMon II: UPS battery is weak." when the UPS reports that the battery is low, and utility power is present.

"xx/xx/xx xx:xx:xx PowerMon II: UPS battery no longer in weak condition." when UPS reports battery is no longer low.

"xx/xx/xx xx:xx:xx PowerMon II: On Battery Backup." when the UPS reports utility power failure.

"xx/xx/xx xx:xx:xx PowerMon II: Power Restored." and the time on backup, when utility power is restored.

"xx/xx/xx xx:xx:xx PowerMon II: UPS battery low." when the UPS reports that the battery is low, and utility power has failed.

(Note that xx/xx/xx xx:xx:xx indicates the current date time.)

It is important to test PowerMon II to be sure it is monitoring the UPS. If you don't test PowerMon II, your system could be unprotected.

For testing purposes, you can comment out the shutdown command in the file, **ups_halt.com**.

- Cut utility power to the UPS.
- You should get a message on the *device for diagnostic output*, "xx/xx/xx xx:xx:xx PowerMon II: On Battery Backup."

- Whether or not you get any messages within 25 seconds, restore power to the UPS.
- You should get a message, "xx/xx/xx xx:xx:xx PowerMon II: Power Restored."

If you commented out the shutdown command in the file, **ups_halt.com**, please remove the comment.

If you get messages, PowerMon II detects utility power failure. If no messages appear, refer to the section titled, **Trouble Shooting**.

Note: Once satisfied that PowerMon II is operating properly, add the following line to **sys\$startup:systartup_v5.com**, **systartup_vms.com**, or the appropriate startup command procedure to automatically activate PowerMon II when the system is rebooted. This line should be added after the terminal characteristics have been modified and the **ups\$dir** logical has been assigned as discussed in the **Installation & Configuration** section:

@ups\$dir:ups_run

Trouble Shooting

Every effort has been made to ensure that PowerMon II installation is easy and straightforward. If you should experience problems or unexpected results during the installation or execution of PowerMon II, please verify your system setup and configuration using the following checklist:

Pre-installation Checklist

Positively identify the name of the serial port that the PowerMon II communications cable is connected to.
(Consult computer/operating system documentation)

Verify that the serial port terminal characteristics match those given.

Verify that no other applications are using/accessing this serial port. PowerMon II **must** have a dedicated port.

Verify that you are using the cable supplied with the PowerMon II software and that it is securely connected to this serial port. If you are using an adapter, it must be a standard serial adapter. (See **Serial Adapter Diagrams**)

Verify that the other end of the supplied cable is securely attached to the UPS's interface. This end should not require any adapters. (If the UPS end of the cable does not connect exactly, contact Systems Enhancement Corporation.)

Verify that your UPS is properly connected, turned on, and has been charged as specified in the UPS owners manual.

Installation Checklist

Verify that all of the files are in the **ups\$dir** directory.

Verify that in the port set-up, the baud rate is set to 2400.

Verify that you are using the proper **Configuration Code**.

Check the section titled **Common Problems and Their Solutions**.

Common Problems & Solutions

Problem: PowerMon II dies immediately or soon after being run.

Solution: Check `ups$dir:error_log.ups` for an error message describing the problem.

Problem: Message repeatedly appears on output device stating system is on battery backup followed by a power restored message.

Solution: Verify port configuration parameter `pastru` is set.

Solution: I/O time-out may need to be increased, contact Technical Support for instructions.

Problem: When starting PowerMon II, the following message is immediately displayed.

"PowerMon II: Communications failure - Check Data Cable!"

Possibly followed by:

"PowerMon II: Communications failure with UPS - Exiting"

Solution: Verify that the cable is connected to the correct serial port. (See the section titled, **Serial Port Testing**)

Solution: Check to see if PowerMon II is starting twice.

Solution: Another process may be interfering with PowerMon II communications. Verify that no other processes are accessing the serial port.

Problem: When starting PowerMon II, a message indicating a utility power failure or low battery is immediately displayed.

Solution: Make sure that the cable is securely connected to the UPS. If the UPS is charged and seems to be operating properly, this message indicates that PowerMon II is having trouble identifying the

status of the UPS. Make sure you are using the correct Configuration Code.

Problem: Power is removed from the UPS, but no messages are broadcast.

Solution: Make sure the cable is securely connected to the UPS interface. Make sure the PowerMon II process, **PowerMon_II**, is running.

Problem: The time-out period expired, you received messages indicating that PowerMon II detected utility power failure, power was not restored, and your system is still up.

Solution: Make sure that the shut down command in the file **ups\$dir:ups_halt.com** isn't commented out. Also, make sure the supplied shutdown command is the proper one for your system.

Problem: When starting PowerMon II, a message appears on the diagnostic output device stating UPS battery is weak.

Solution: Make sure the cable is securely connected to the UPS, and that the UPS is fully charged.

Solution: Make sure you are using the correct Configuration Code.

Solution: The weak battery/low battery signal is being improperly recognized, even though it stated that the low battery signal would be monitored at configuration time. Cutting power to the UPS at this point will cause an immediate shutdown. To avoid this, reconfigure the software and use Configuration Code 1 (if you previously used Configuration Code 3 or 5), or 2 (if you previously used Configuration Code 4 or 6). Now, at power failure, the software will shutdown your computer when the shutdown timer expires, and low battery will not be monitored.

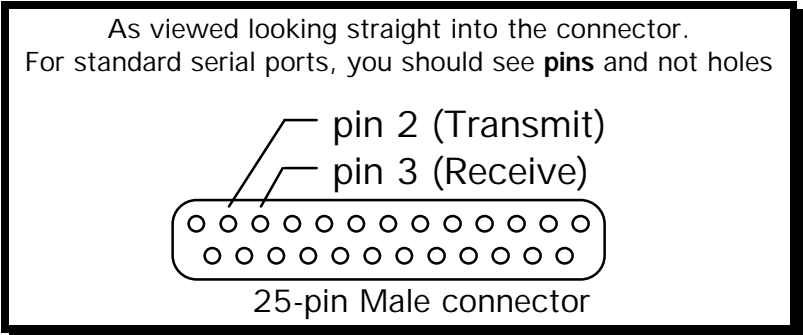
Serial Port Testing

The following procedure is used to determine if PowerMon II is able to communicate properly through the specified serial port on your computer. This procedure will test the serial port independent of the supplied PowerMon II cable and UPS.

Follow the suggestions in Serial Port Test Results to determine where the communications problem occurs.

- Login to the system as the system manager.
- At the \$ prompt, change the working directory to **ups\$dir** by typing:
`set default ups$dir: <enter>`
- Start the Control Center by typing:
`run upsmenu <enter>`
- Choose **PowerMon II Termination** from the Control Center menu. Exit the menu.
- Disconnect the supplied PowerMon II cable from your computer's serial port. The other end may be left connected to your UPS.
- Start PowerMon II in test mode by typing:
`@ups_porttest <enter>`
Information about the current configuration will be scrolled across the screen, then test monitoring begins. A message will tell you that PowerMon II is opening the port that the software is currently configured for, followed by writing and reading a character sent to the port. The last message will give you the status of the operation, such as "No characters returned from device..."

- Using a "jumper wire" or a metal paper clip, jumper pins number **2** and **3** on your computer's serial port. (See the following diagram for pin numbering on a 25-pin male port.) Continue to hold the two pins jumpered together.



- Within 5-10 seconds of jumpering pins **2** and **3** together, the status message should change to, "*Detected closure of TXD and RXD pins*" Then the status message will change to, "*TXD and RXD pins still closed*"
- Whether or not the status changes, remove the jumper from the pins. Within 5-10 seconds, the status message should change to, "*Detected opening of TXD and RXD pins contact*" Then the status message will change to "*No characters returned from device ...*"
- Stop the **PowerMon_II** process by pressing the system interrupt key `<ctrl+y>`.

Serial Port Test Results

If you receive the messages as stated above, PowerMon II is able to communicate through your computer's serial port properly. If your system passes this test, reconnect the PowerMon II cabling and activate PowerMon II. Then, if you continue to have problems, you will need to place a technical support call.

If you do **not** receive the messages, there is a problem with your serial port. You should:

- Ensure that your serial port is properly installed and configured to your system.
- Are you testing the right port? Ports can be mislabeled.
- Check that no other setups are conflicting with the port.
- Check that no other applications are accessing the port.
- Perform another test on the serial port using another method such as getting an external modem or terminal working.

PowerMon II will **not** function properly until the serial port passes the test described.

Serial Adapter Guidelines

PowerMon II packages come standard with a 25 pin female connector on the computer (CPU) end of the cable. If your serial port isn't a 25 pin male connector, you will need to attach an adapter to this end (CPU) of the cable. **You must use the supplied cable.** Use the following pin assignments to make an adapter between your computer's serial port and the PowerMon II cable.

Signal To Signal Adapter

Signal Description		Cable Side 25 Pin Male
TXD	Transmit Data	2
RXD	Receive Data	3
RTS	Request To Send	4
CTS	Clear To Send	5
DSR	Data Set Ready	6
GND	Signal Ground	7
DCD	Data Carrier Detect	8
DTR	Data Terminal Ready	20

If you need another adapter for your system, contact your computer retailer or Systems Enhancement. You must get an adapter that terminates in a true RS-232 DTE footprint.

Extender cables and other custom cables are available from Systems Enhancement Corporation. If you are making your own extender cable, make sure it is signal to signal.

Do **not** use a null modem adapter.

Placing a Technical Support Call

In order to diagnose the problem you are having, our technicians will need the following information from you:

Installation Site:

Company Name: _____

Address: _____

City: _____

State: _____ ZIP code: _____

Installation Site Contact:

Full Name: _____

Phone Number: _____

Fax Number: _____

If you are a consultant,

Consultant Name: _____

Phone Number: _____

Fax Number: _____

Computer System:

Operating System type and version: _____

System Manufacturer: _____

System Model Number: _____

Type of Serial Port Connector (How many pins, male or female, etc.): _____

Address of the Port: _____

UPS:

Manufacturer: _____

Model Name/Number: _____

Type of Port Connector (How many pins, male or female, etc.): _____

PowerMon II Configuration:

Configuration Code: _____

Cable's Part Number (From tag on end of cable): _____

Are any adapters connected to the cable? _____

If yes, what type? _____

Include a listing of Terminal Characteristics.

What are the symptoms?



Technical Support



Have the information listed above ready. You can reach us by calling:

US & World: (314) 532-2855

by fax at (314) 532-2037

or by E-mail at: support@sechq.com