

Part No. 210274-E Rev 0.00
March 2004

4655 Great America Parkway
Santa Clara, CA 95054

Installing Optivity Switch Manager Release 4.0.0.0

210274-E

NORTEL
NETWORKS™

Copyright © 2004 Nortel Networks

All rights reserved. March 2004.

The information in this document is subject to change without notice. The statements, configurations, technical data, and recommendations in this document are believed to be accurate and reliable, but are presented without express or implied warranty. Users must take full responsibility for their applications of any products specified in this document. The information in this document is proprietary to Nortel Networks Inc.

The software described in this document is furnished under a license agreement and may be used only in accordance with the terms of that license. The software license agreement is included in this document.

Trademarks

Nortel Networks, the Nortel Networks logo, the Globemark, Unified Networks, Optivity, BayStack and Passport are trademarks of Nortel Networks.

Microsoft, Windows, and Windows NT are trademarks of Microsoft Corporation.

Adobe and Acrobat Reader are trademarks of Adobe Systems Incorporated.

Sun, Solaris and Java are trademarks of Sun Microsystems Incorporated.

The asterisk after a name denotes a trademarked item.

Restricted rights legend

Use, duplication, or disclosure by the United States Government is subject to restrictions as set forth in subparagraph (c)(1)(ii) of the Rights in Technical Data and Computer Software clause at DFARS 252.227-7013.

Notwithstanding any other license agreement that may pertain to, or accompany the delivery of, this computer software, the rights of the United States Government regarding its use, reproduction, and disclosure are as set forth in the Commercial Computer Software-Restricted Rights clause at FAR 52.227-19.

Statement of conditions

In the interest of improving internal design, operational function, and/or reliability, Nortel Networks NA Inc. reserves the right to make changes to the products described in this document without notice.

Nortel Networks NA Inc. does not assume any liability that may occur due to the use or application of the product(s) or circuit layout(s) described herein.

Portions of the code in this software product may be Copyright © 1988, Regents of the University of California. All rights reserved. Redistribution and use in source and binary forms of such portions are permitted, provided that the above copyright notice and this paragraph are duplicated in all such forms and that any documentation, advertising materials, and other materials related to such distribution and use acknowledge that such portions of the software were developed by the University of California, Berkeley. The name of the University may not be used to endorse or promote products derived from such portions of the software without specific prior written permission.

SUCH PORTIONS OF THE SOFTWARE ARE PROVIDED "AS IS" AND WITHOUT ANY EXPRESS OR IMPLIED WARRANTIES, INCLUDING, WITHOUT LIMITATION, THE IMPLIED WARRANTIES OF MERCHANTABILITY AND FITNESS FOR A PARTICULAR PURPOSE.

In addition, the program and information contained herein are licensed only pursuant to a license agreement that contains restrictions on use and disclosure (that may incorporate by reference certain limitations and notices imposed by third parties).

Nortel Networks NA Inc. Optivity® network management software license agreement

NOTICE: Please carefully read this license agreement before copying or using the accompanying Optivity network management software or installing the hardware unit with pre-enabled Optivity network management software (each of which is referred to as “Software” in this Agreement). BY COPYING OR USING THE SOFTWARE, YOU ACCEPT ALL OF THE TERMS AND CONDITIONS OF THIS LICENSE AGREEMENT. THE TERMS EXPRESSED IN THIS AGREEMENT ARE THE ONLY TERMS UNDER WHICH NORTEL NETWORKS WILL PERMIT YOU TO USE THE SOFTWARE. If you do not accept these terms and conditions, return the product, unused and in the original shipping container, within 30 days of purchase to obtain a credit for the full purchase price.

1. License grant. Nortel Networks NA Inc. (“Nortel Networks”) grants the end user of the Software (“Licensee”) a personal, nonexclusive license: a) to use the Software either on a single computer or, if applicable, on a single authorized device identified by host ID; b) to copy the Software solely for backup purposes in support of authorized use of the Software; and c) to use and copy the associated user manual solely in support of authorized use of the Software by Licensee. This license applies to the Software only and does not extend to Nortel Networks Agent software or other Nortel Networks software products. Nortel Networks Agent software or other Nortel Networks software products are licensed for use under the terms of the applicable Nortel Networks NA Inc. Software License Agreement that accompanies such software and upon payment by the end user of the applicable license fees for such software.

2. Restrictions on use; reservation of rights. The Software and user manuals are protected under copyright laws. Nortel Networks and/or its licensors retain all title and ownership in both the Software and user manuals, including any revisions made by Nortel Networks or its licensors. The copyright notice must be reproduced and included with any copy of any portion of the Software or user manuals. Licensee may not modify, translate, decompile, disassemble, use for any competitive analysis, reverse engineer, distribute, or create derivative works from the Software or user manuals or any copy, in whole or in part. Except as expressly provided in this Agreement, Licensee may not copy or transfer the Software or user manuals, in whole or in part. The Software and user manuals embody Nortel Networks’ and its licensors’ confidential and proprietary intellectual property. Licensee shall not disclose to any third party the Software, or any information about the operation, design, performance, or implementation of the Software and user manuals that is confidential to Nortel Networks and its licensors; however, Licensee may grant permission to its consultants, subcontractors, and agents to use the Software at Licensee’s facility, provided they have agreed to use the Software only in accordance with the terms of this license.

3. Limited warranty. Nortel Networks warrants each item of Software, as delivered by Nortel Networks and properly installed and operated on Nortel Networks hardware or other equipment it is originally licensed for, to function substantially as described in its accompanying user manual during its warranty period, which begins on the date Software is first shipped to Licensee. If any item of Software fails to so function during its warranty period, as the sole remedy Nortel Networks will at its discretion provide a suitable fix, patch, or workaround for the problem that may be included in a future Software release. Nortel Networks further warrants to Licensee that the media on which the Software is provided will be free from defects in materials and workmanship under normal use for a period of 90 days from the date the Software is first shipped to Licensee. Nortel Networks will replace defective media at no charge if it is returned to Nortel Networks during the warranty period along with proof of the date of shipment. This warranty does not apply if the media has been damaged as a result of accident, misuse, or abuse. The Licensee assumes all responsibility for selection of the Software to achieve Licensee’s intended results and for the installation, use, and results obtained from the Software. Nortel Networks does not warrant a) that the functions contained in the software will meet the Licensee’s requirements, b) that the Software will operate in the hardware or software combinations that the Licensee may select, c) that the operation of the Software will be uninterrupted or error free, or d) that all defects in the operation of the Software will be corrected. Nortel Networks is not obligated to remedy any Software defect that cannot be reproduced with the latest Software release. These warranties do not apply to the Software if it has been (i) altered, except by Nortel Networks or in accordance with its instructions; (ii) used in conjunction with another vendor’s product, resulting in the defect; or (iii) damaged by improper environment, abuse, misuse, accident, or negligence. THE FOREGOING WARRANTIES AND LIMITATIONS ARE EXCLUSIVE REMEDIES AND ARE IN LIEU OF ALL OTHER WARRANTIES EXPRESS OR IMPLIED, INCLUDING WITHOUT LIMITATION ANY WARRANTY OF MERCHANTABILITY OR FITNESS FOR A PARTICULAR PURPOSE. Licensee is responsible for the security of its

own data and information and for maintaining adequate procedures apart from the Software to reconstruct lost or altered files, data, or programs.

4. Limitation of liability. IN NO EVENT WILL NORTEL NETWORKS OR ITS LICENSORS BE LIABLE FOR ANY COST OF SUBSTITUTE PROCUREMENT; SPECIAL, INDIRECT, INCIDENTAL, OR CONSEQUENTIAL DAMAGES; OR ANY DAMAGES RESULTING FROM INACCURATE OR LOST DATA OR LOSS OF USE OR PROFITS ARISING OUT OF OR IN CONNECTION WITH THE PERFORMANCE OF THE SOFTWARE, EVEN IF NORTEL NETWORKS HAS BEEN ADVISED OF THE POSSIBILITY OF SUCH DAMAGES. IN NO EVENT SHALL THE LIABILITY OF NORTEL NETWORKS RELATING TO THE SOFTWARE OR THIS AGREEMENT EXCEED THE PRICE PAID TO NORTEL NETWORKS FOR THE SOFTWARE LICENSE.

5. Government licensees. This provision applies to all Software and documentation acquired directly or indirectly by or on behalf of the United States Government. The Software and documentation are commercial products, licensed on the open market at market prices, and were developed entirely at private expense and without the use of any U.S. Government funds. The license to the U.S. Government is granted only with restricted rights, and use, duplication, or disclosure by the U.S. Government is subject to the restrictions set forth in subparagraph (c)(1) of the Commercial Computer Software—Restricted Rights clause of FAR 52.227-19 and the limitations set out in this license for civilian agencies, and subparagraph (c)(1)(ii) of the Rights in Technical Data and Computer Software clause of DFARS 252.227-7013, for agencies of the Department of Defense or their successors, whichever is applicable.

6. Use of software in the European Community. This provision applies to all Software acquired for use within the European Community. If Licensee uses the Software within a country in the European Community, the Software Directive enacted by the Council of European Communities Directive dated 14 May, 1991, will apply to the examination of the Software to facilitate interoperability. Licensee agrees to notify Nortel Networks of any such intended examination of the Software and may procure support and assistance from Nortel Networks.

7. Term and termination. This license is effective until terminated; however, all of the restrictions with respect to Nortel Networks' copyright in the Software and user manuals will cease being effective at the date of expiration of the Nortel Networks copyright; those restrictions relating to use and disclosure of Nortel Networks' confidential information shall continue in effect. Licensee may terminate this license at any time. The license will automatically terminate if Licensee fails to comply with any of the terms and conditions of the license. Upon termination for any reason, Licensee will immediately destroy or return to Nortel Networks the Software, user manuals, and all copies. Nortel Networks is not liable to Licensee for damages in any form solely by reason of the termination of this license.

8. Export and re-export. Licensee agrees not to export, directly or indirectly, the Software or related technical data or information without first obtaining any required export licenses or other governmental approvals. Without limiting the foregoing, Licensee, on behalf of itself and its subsidiaries and affiliates, agrees that it will not, without first obtaining all export licenses and approvals required by the U.S. Government: (i) export, re-export, transfer, or divert any such Software or technical data, or any direct product thereof, to any country to which such exports or re-exports are restricted or embargoed under United States export control laws and regulations, or to any national or resident of such restricted or embargoed countries; or (ii) provide the Software or related technical data or information to any military end user or for any military end use, including the design, development, or production of any chemical, nuclear, or biological weapons.

9. General. If any provision of this Agreement is held to be invalid or unenforceable by a court of competent jurisdiction, the remainder of the provisions of this Agreement shall remain in full force and effect. This Agreement will be governed by the laws of the state of California.

10.Disclaimer. This application supports only the English language, it may work for other languages but is not supported by Nortel Network

Should you have any questions concerning this Agreement, contact Nortel Networks, 4401 Great America Parkway, P.O. Box 58185, Santa Clara, California 95054-8185.

LICENSEE ACKNOWLEDGES THAT LICENSEE HAS READ THIS AGREEMENT, UNDERSTANDS IT, AND AGREES TO BE BOUND BY ITS TERMS AND CONDITIONS. LICENSEE FURTHER AGREES THAT THIS AGREEMENT IS THE ENTIRE AND EXCLUSIVE AGREEMENT BETWEEN NORTEL NETWORKS AND LICENSEE, WHICH SUPERSEDES ALL PRIOR ORAL AND WRITTEN AGREEMENTS AND COMMUNICATIONS BETWEEN THE PARTIES PERTAINING TO THE SUBJECT MATTER OF THIS AGREEMENT. NO DIFFERENT OR ADDITIONAL TERMS WILL BE ENFORCEABLE AGAINST NORTEL

NETWORKS UNLESS NORTEL NETWORKS GIVES ITS EXPRESS WRITTEN CONSENT, INCLUDING AN EXPRESS WAIVER OF THE TERMS OF THIS AGREEMENT.

About this guide

This guide describes the procedure to install Optivity Switch Manager Release 4.0 on a PC or a Sun* workstation running Solaris* 2.7, 2.8, or 2.9, or SunOS* 5.7, 5.8, or 5.9, or Linux-Kernel version 2.2 and above.

This installation guide contains the following sections:

Section	Page
Supported devices	next
Operating Systems	9
What is included on the CD	9
Before you begin	10
Installing the software in a Windows environment	11
Installing OSM in a Solaris 2.7, 2.8, or 2.9 environment	16
Installing the software in Linux environment	24
Installing Complete dialog box	30
Launching Device Manager	30
Launching Scheduler Server from the command line	31

Supported devices

Optivity Switch Manager currently supports the Nortel Networks* platforms and software releases described in [Table 1](#).

Table 1 Optivity Switch Manager supported platforms and software releases

Platform	Software release
Passport* 8600, including the following new hardware: 8681XLW module, 8681XLR module, 8616GTE module, 8672ATME MDA, 8608GBM module, 8608GTM module, 8632TXM module, 8648TXM module, 8672ATMM module, 8683POSM module.	3.0, 3.0.x, 3.1.x, 3.2.0, 3.2.0.2, 3.2.1.0, 3.2.2 (OSM 2.0), 3.3 (OSM 3.0), 3.5, 3.7 (OSM 4.0)
Passport 8600 Web Switching Module	WebOS 9.x (OSM 2.0), 10.0.x (OSM 3.0)

Table 1 Optivity Switch Manager supported platforms and software releases (continued)

Platform	Software release
Passport 8300	2.0(OSM 4.0)
Passport 8100	2.0, 2.0.1.1, 3.1.x, 3.2.0, 3.2.0.2, 3.2.1.0, 3.2.2 (OSM 2.0), 3.3 (OSM 3.0)
Passport 1050/1150/1200/1250	2.0.5.6, 2.0.5.7, 2.0.7.2, 2.0.7.3, 2.0.7.4, 2.1.0, 2.1.3 (OSM 2.0, OSM 3.0).
Passport 1424T	2.1 (OSM 3.0)
Passport 1612G, 1624G, 1648T	1.0 (OSM 3.0)
BayStack* 350/410/450	3.0, 3.1, 4.0, 4.1 (OSM 2.0), 4.2,4.3 and 4.4(OSM 3.0)
Business Policy Switch 2000*	1.0 (OSM 1.0), 1.0.1, 1.1, 1.2, 2.x (OSM 2.0), 3.0 (OSM 3.0),3.1(OSM 4.0)
BayStack 380-24 T	2.0, 2.0.,3.0 (OSM 3.0),3.0(OSM 4.0)
BayStack 380-24 F	2.1.0,3.0 (OSM 3.0),3.0(OSM 4.0)
BayStack 420	1.0 OSM 1.0), 1.0.2, 1.1 (OSM 2.0), 1.1.1, 1.1.2,1.1.3,3.0(OSM 3.0),3.0(OSM 4.0)
BayStack 460	2.3, 3.0 (OSM 3.0),3.0(OSM 4.0)
BayStack 470-24 T	2.0,3.0 (OSM 3.0),3.0(OSM 4.0)
BayStack 470-48 T	2.1.0 (only standalone supported); 2.2.0, 2.2.1 (stack also supported), 3.0,3.0(OSM 4.0)
Bay Stack 425-24T	2.0,3.0(OSM 3.0),3.0(OSM 4.0)
Bay Stack 5510	3.0,3.0.0.1(OSM 3.0),3.0(OSM 4.0)
OPtera Metro 1200/1400/1450**	1.0,1.1, 1.2,1.3
Alteon 2208, 2216, 2224, 2424, 3408, 3416	AOS 21.0
WLAN AP devices	1.3
**These devices can be discovered but are not supported.	

In addition, Optivity Switch Manager discovers any device that supports the Bay Networks* Autotopology Discovery protocol. These devices are visible in the Optivity Switch Manager topology map, but you can only configure the devices listed in [Table 1](#).

Operating Systems

Table 2 lists the operating systems supported by the Optivity Switch Manager.

Table 2 Supported operating systems

Operating System	Version
Microsoft Windows*	95, 98, NT, 2000 (Professional), and XP
Unix—Solaris/SunOS	2.7, 2.8, and 2.9/5.7, 5.8, and 5.9
Linux	Kernel version 2.2 and above



Note: An operating system patch may be required for installing the Java Runtime Environment (JRE) for some Solaris/SunOS releases.

What is included on the CD

Your *Optivity Switch Manager Release 4.0 Software* CD contains Optivity Switch Manager Release 4.0 Software for Windows, Solaris, and Linux.



Note: In this release and future releases OSM will be combined with JRE. This release is combined with JRS 1.4.1

Java Device Manager (JDM) is installed as part of the Optivity Switch Manager installation. After installation, Device Manager can be upgraded independently of Optivity Switch Manager.

Before you begin

Before you install Optivity Switch Manager, make sure the following requirements are met:

- If you are installing Optivity Switch Manager on a Sun workstation, you have system administration and super user (root) access permissions.
- If you are installing Optivity Switch Manager on a Sun workstation, your system is up-to-date with the required patches to run the JRE required by Optivity Switch Manager Software Release 4.0.
- Your system meets the RAM and storage requirements listed in [Table 3](#) for Optivity Switch Manager and Device Manager.

Table 3 Minimum RAM and storage requirements

Platform	Requirements
Windows	128 megabytes (MB) of RAM
Windows	300 MB of disk space
Solaris	128 MB of RAM
Solaris	300 MB of disk space
Linux	128 MB of RAM
Linux	300 MB of disk space

In a Solaris environment, you may also need to install system patches.



Note: To ensure proper operation, any Solaris/SunOS patches, if required, must be installed prior to installing Optivity Switch Manager.

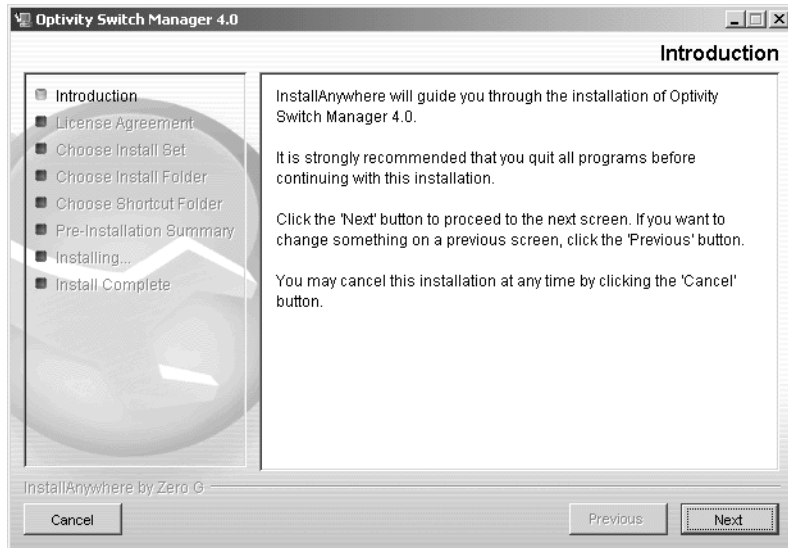
Installing the software in a Windows environment

To install the Optivity Switch Manager software in your windows environment:

- 1 Close all programs.
- 2 **Insert** the *Optivity Switch Manager Release 4.0 Software* CD into your CD-ROM drive.
- 3 From the Windows Start menu, choose **Start > Run**.
The Run dialog box opens.
- 4 Use **Browse** to navigate to the drive where the CD-ROM is located.
- 5 On the CD-ROM drive, **locate** the \OSM_SW\OSM-Windows subdirectory.
- 6 Double-click on the **osm_4000.exe** file.

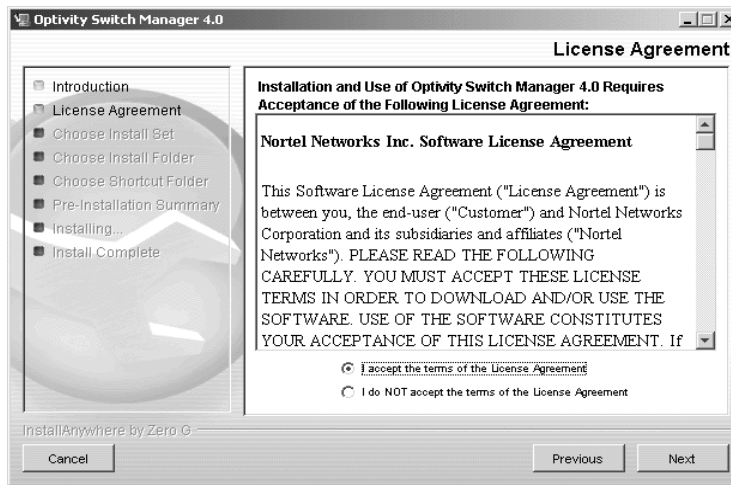
The InstallAnywhere* Introduction dialog box opens ([Figure 1](#)).

Figure 1 InstallAnywhere Introduction dialog box



- 7 Click **Next** to continue the installation process.

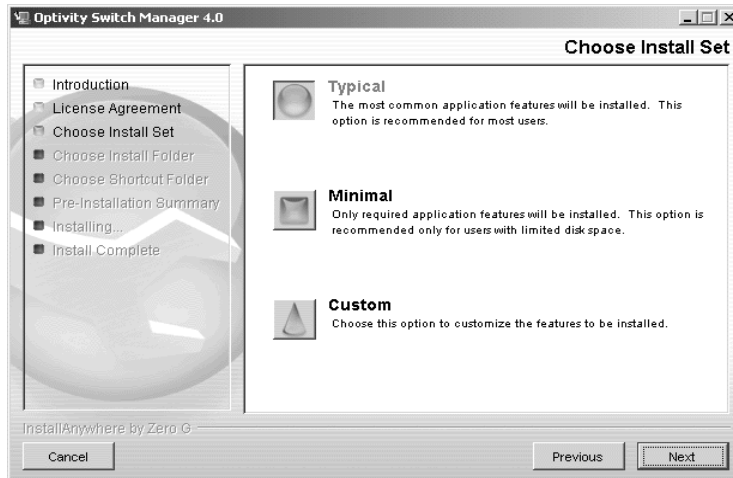
The License Agreement dialog box opens ([Figure 2](#)).

Figure 2 License Agreement dialog box

8 Click **I accept the terms of the license agreement** as shown in [Figure 2](#).

9 Click **Next**.

The Choose Install Set dialog box opens ([Figure 3](#)).

Figure 3 Choose Install Set dialog box

10 Do one of the following:

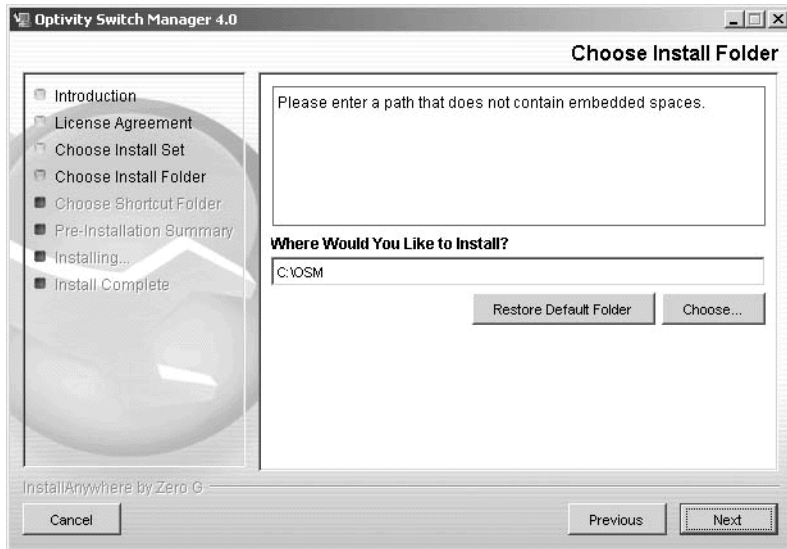
- Select **Typical** installation to install the common set features.

- Select **Minimal** installation to select the features to install (recommended for those with limited disk space).
- Select **Custom** installation to customize the features prior to installation.

11 Click **Next**.

The Choose Install Folder dialog box opens (Figure 4).

Figure 4 Choose Install Folder dialog box

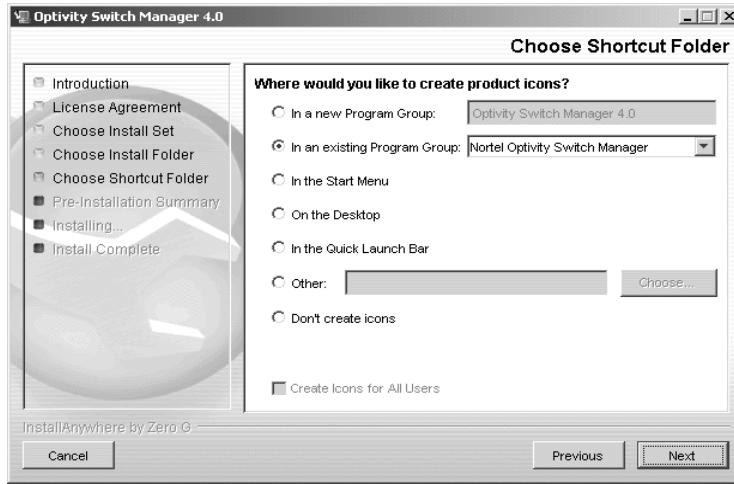


12 Select **Restore Default Folder** or click **Choose** to select the storage path.

You cannot have spaces in the path name.

13 Click **Next**.

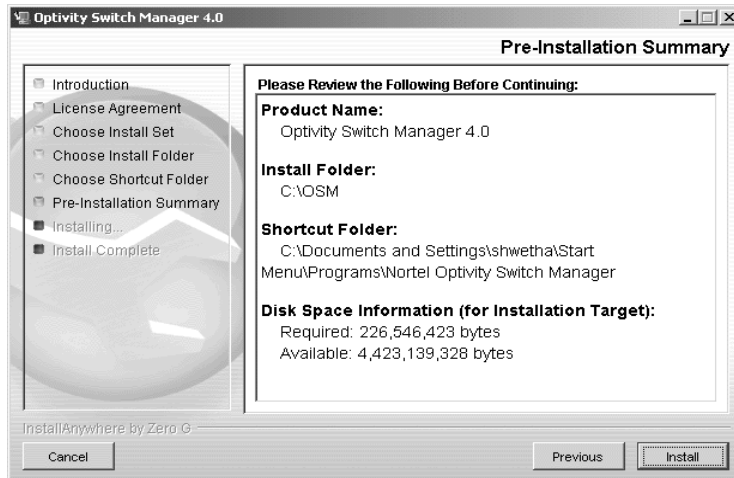
The Choose Shortcut Folder dialog box opens (Figure 5).

Figure 5 Choose Shortcut Folder dialog box

14 Select your shortcut path(s).

15 Click **Next**.

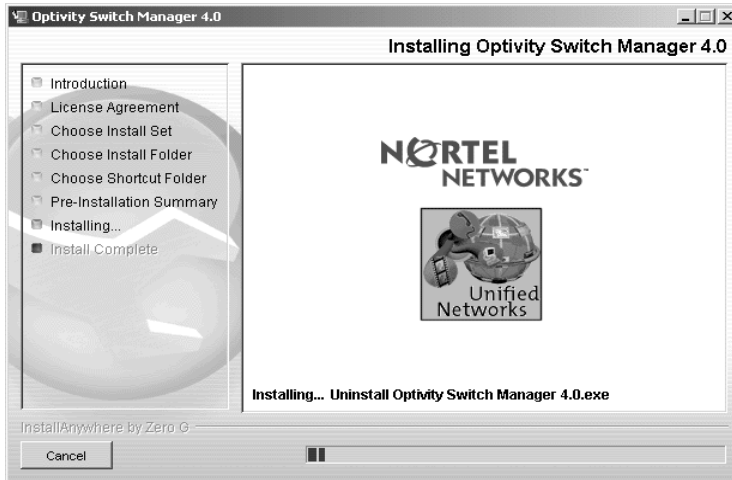
The Pre-Installation Summary dialog box opens (Figure 6).

Figure 6 Pre-installation Summary dialog box

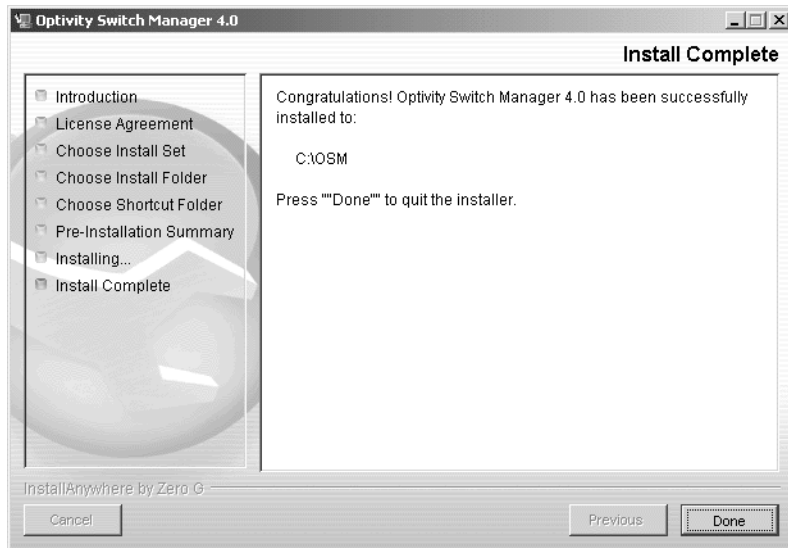
16 Verify the folder, shortcut(s), and disk space required to install the software. Use the **Previous** button to return to the appropriate dialog box to make changes.

17 Click Install.

The installation process begins (Figure 7).

Figure 7 Installing Optivity Switch Manager dialog box

18 When the installation is complete, the Install Complete dialog box opens (Figure 8).

Figure 8 Install Complete dialog box

19 Click Done.

Immediately before the Install Complete dialog is displayed, the installer will install two services into the system, the RMIRegistry service, and the OSMScheduler service, and start both services.



Note: The RMIRegistry and the OSMScheduler are service only for the Window NT, Window 2000, and Window XP platforms. For Window 9x, you must run Scheduler from the OSM menu command and must also start RMI Registry and leave RMI window open before launching Scheduler.

For more information on using Optivity Switch Manager, refer to *Using Optivity Switch Manager, Release 4.0* (208963-D).

Installing OSM in a Solaris 2.7, 2.8, or 2.9 environment



Note: To ensure proper operation, any Solaris/SunOS patches, if required, must be installed prior to installing Optivity Switch Manager.

To run Optivity Switch Manager on a Sun workstation, the workstation must be running Solaris 2.7, 2.8, or 2.9 or SunOS 5.7, 5.8, or 5.9, and the appropriate operating system patches for the version of Solaris/SunOS on your workstation must be installed. If your system has an older version of Solaris/SunOS, you must upgrade the system to at least the 2.7/5.7 level before you install this software.

These instructions assume that you have mounted the CD-ROM drive onto the /cdrom directory. For instructions on mounting the CD-ROM drive, refer to your system's operating system user guide.

- 1 Copy the install program file *osm_4000_solaris.sh* from the /OSM_SW/OSM-Unix subdirectory on the *Optivity Switch Manager Release 4.0*

Software CD to a location on your workstation where you want to install the software.



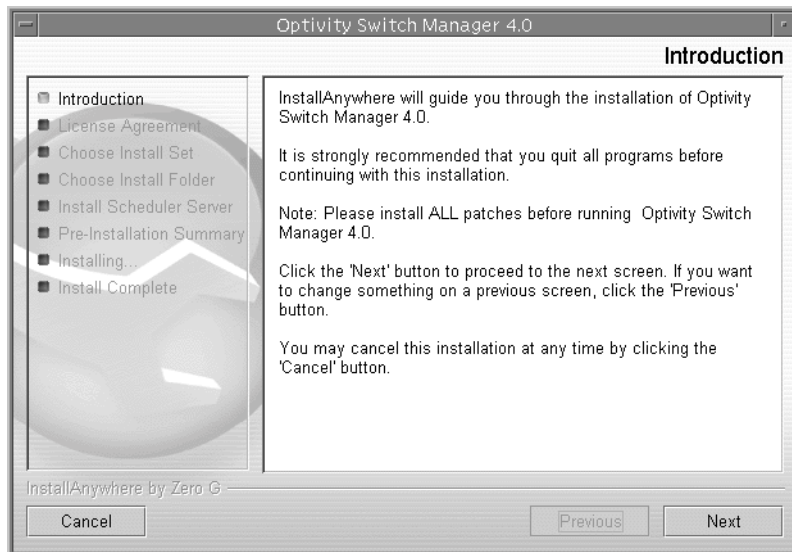
Note: As Solaris is a multi-user system, Nortel Networks recommends that you install OSM as a super-user (root). Super user is required to install the RMIRegistry server and the OSM Scheduler server, see below.

2 Run the install program by entering:

```
osm_4000_solaris.sh
```

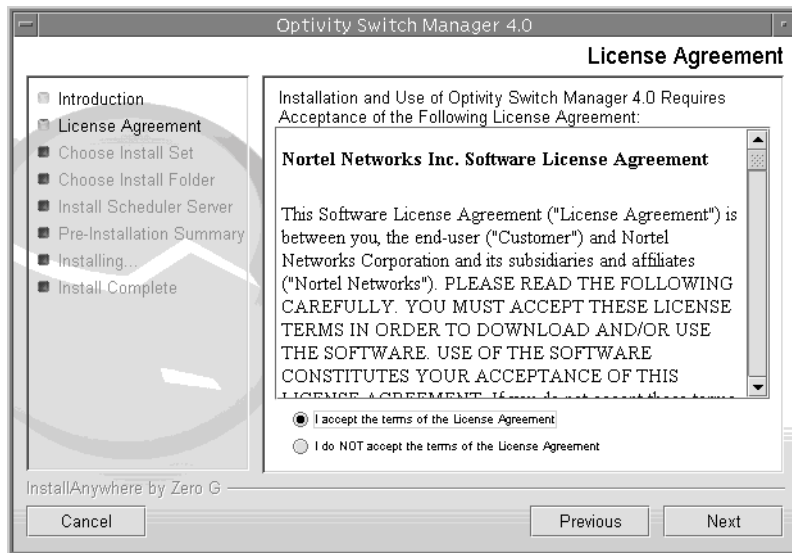
The InstallAnywhere* Introduction dialog box opens (Figure 9).

Figure 9 InstallAnywhere Introduction dialog box



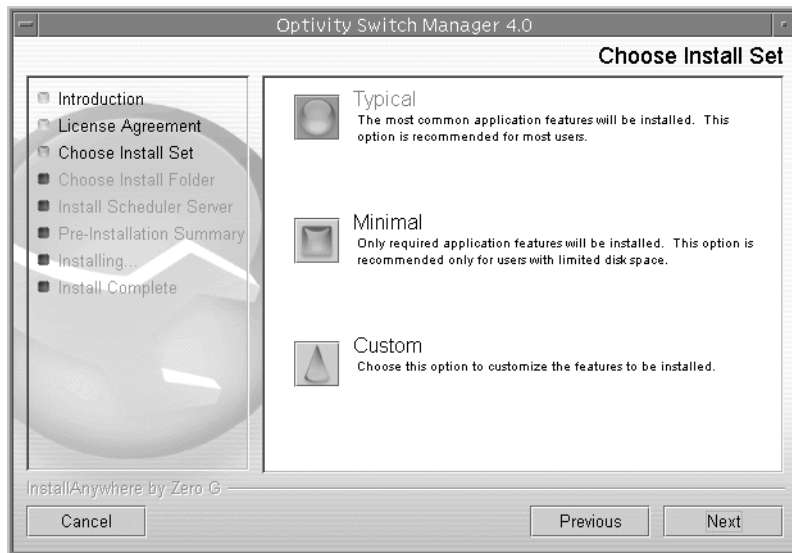
3 Click **Next** to continue the installation process.

The License Agreement dialog box opens (Figure 10).

Figure 10 License Agreement dialog box

- 4 Click **I accept the terms of the license agreement** as shown in [Figure 10](#).
- 5 Click **Next**.

The Choose Install Set dialog box opens ([Figure 11](#)).

Figure 11 Choose Install Set dialog box**6** Do *one* of the following:

- Select **Typical** installation to install the common set features.
- Select **Minimal** installation to select features to install (recommended for those with limited disk space).
- Select **Custom** installation to customize the features prior to installation.

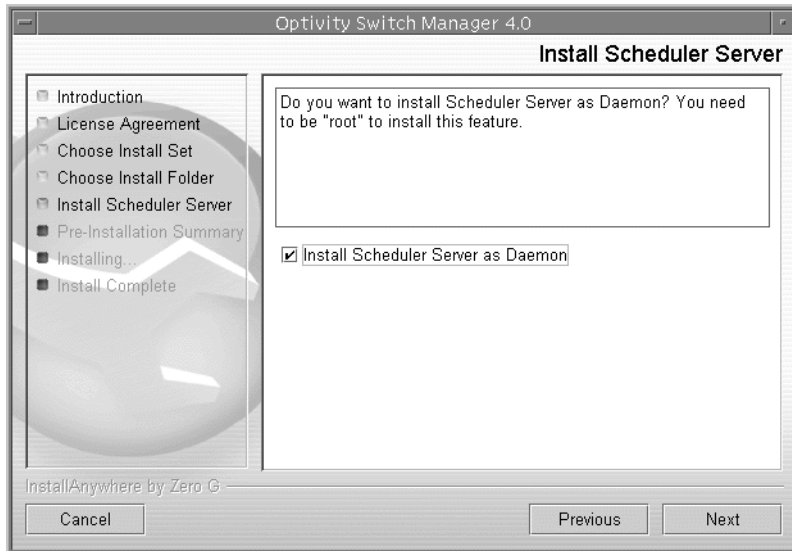
7 Click **Next**.

The Choose Install Folder dialog box opens ([Figure 12](#)).

Figure 12 Choose Install Folder dialog box

- 8** Click **Restore Default Folder** or click **Choose** to select the storage path.
- 9** Click **Next**.

The Install Scheduler Server dialog box opens ([Figure 13](#)).

Figure 13 Install Scheduler Server dialog box

- 10** Click the **optional check box** if you want to install the Scheduler Server as a daemon (the default is not-checked).

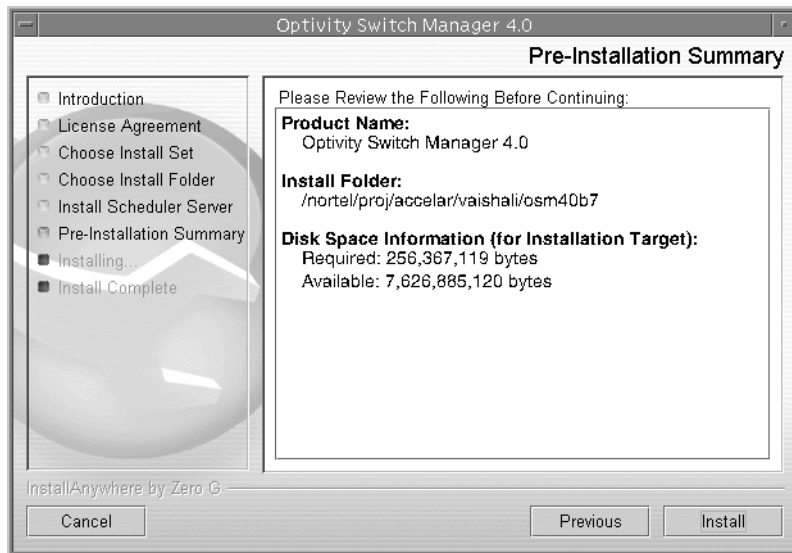
If you choose *not* to install the Scheduler Server as a daemon during the installation process, you can run Scheduler Server as a command.

If you are *not* at the root prior to installing the Scheduler Server, an Installer Error dialog box will display ([Figure 14](#)).

Figure 14 Installer Error dialog box

- 11** Click **Next**.

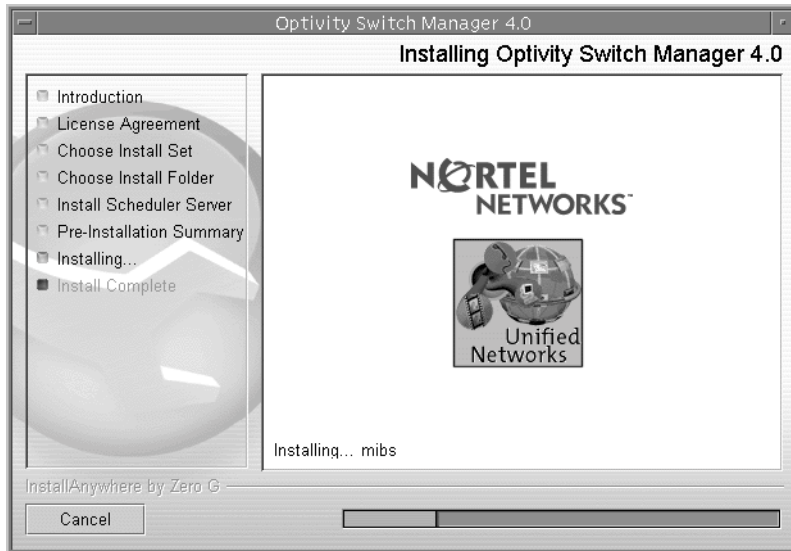
The Pre-Installation Summary dialog box opens ([Figure 15](#)).

Figure 15 Pre-installation Summary dialog box

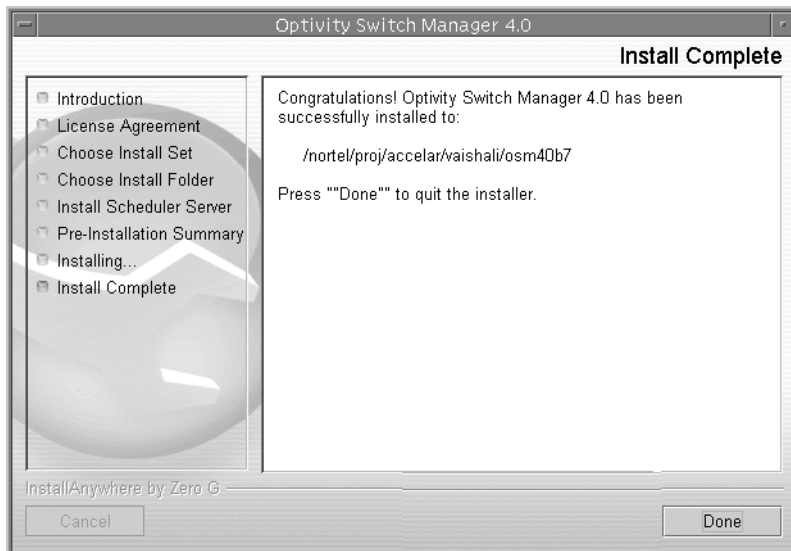
12 Verify the folder, shortcut(s), and disk space required to install the software. Use the Previous button to return to the appropriate dialog box to make changes.

13 Click **Install**.

The installation process begins (Figure 16).

Figure 16 Installing Optivity Switch Manager dialog box

When the installation is complete, the Install Complete dialog box opens (Figure 17).

Figure 17 Install Complete dialog box

14 Click **Done** to exit the installation.

Optivity Switch Manager is now installed.

Installing the software in Linux environment

To run Optivity Switch Manager on Linux workstation, the workstation must be running Linux-Kernel version 2.2 and above. The appropriate operating system patches for the this version of Linux OS must be installed. If your system has an older version of Linux, you must upgrade the system to at least the Kernel version 2.2 and above before installing OSM.

These instructions assume that you have mounted the CD-ROM drive onto the /cdrom directory. For instructions on mounting the CD-ROM drive, refer to your system's operating system user guide.

- 1** Copy the install program file *osm_4000_linux.sh* from the /OSM_SW/OSM-Unix subdirectory found on the *Optivity Switch Manager Release 4.0 Software* CD to a preferred location in your workstation.

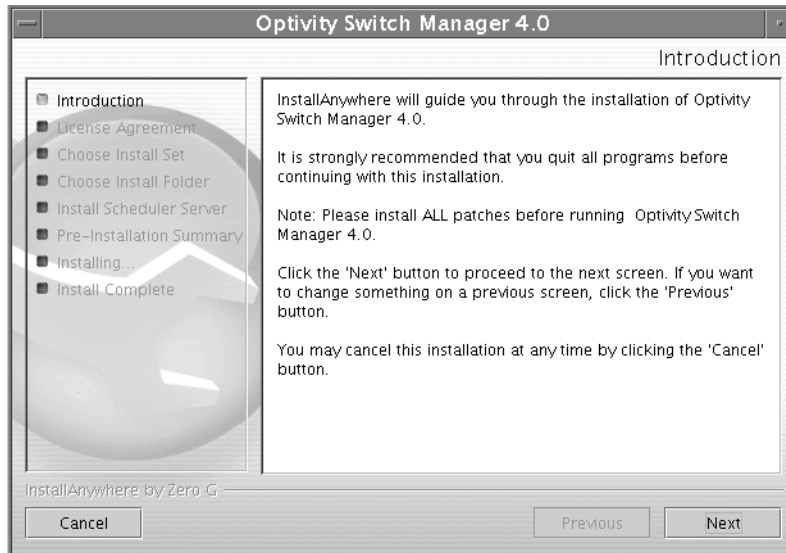
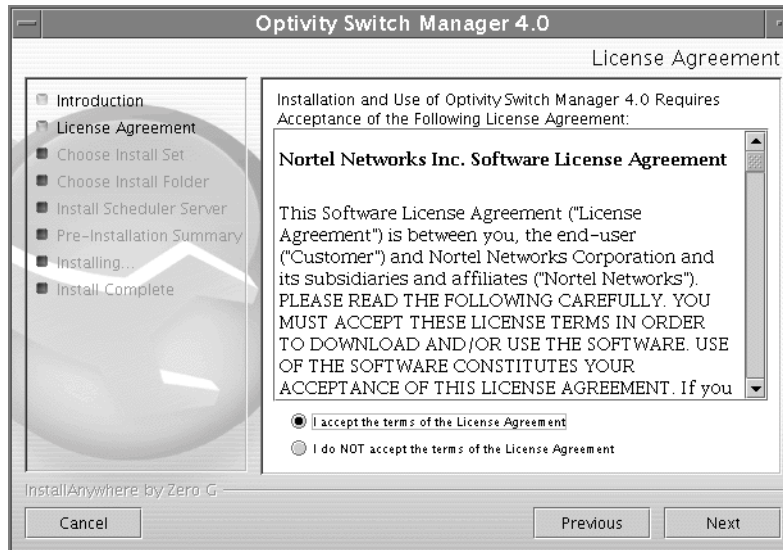


Note: As Linux is a multi-user system, Nortel Networks recommends that you install OSM as a super-user (root). Super user is required to install the RMIRegistry server and the OSM Scheduler server.

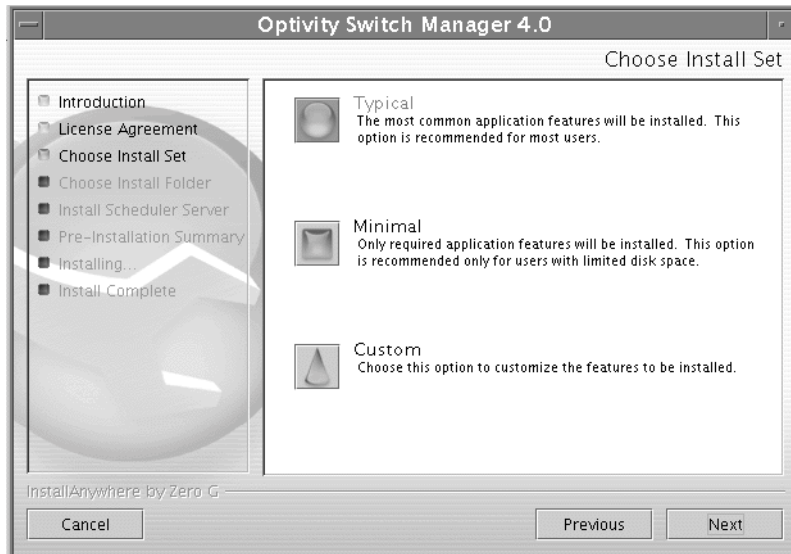
- 2** Run the install program by entering:

```
osm_4000_linux.sh
```

The InstallAnywhere* Introduction dialog box opens ([Figure 18](#)).

Figure 18 InstallAnywhere Introduction dialog box**Figure 19** License Agreement dialog box

- 3 Click **I accept the terms of the license agreement** as shown in [Figure 19](#).
- 4 Click **Next**.
- 5 The Choose Install Set dialog box opens ([Figure 20](#))

Figure 20 Choose Install Folder dialog box

- Select **Minimal** installation to select features to install (recommended for those with limited disk space).
- Select **Custom** installation to customize the features prior to installation.

6 Click **Next**.

Figure 21 Install Scheduler Server dialog box

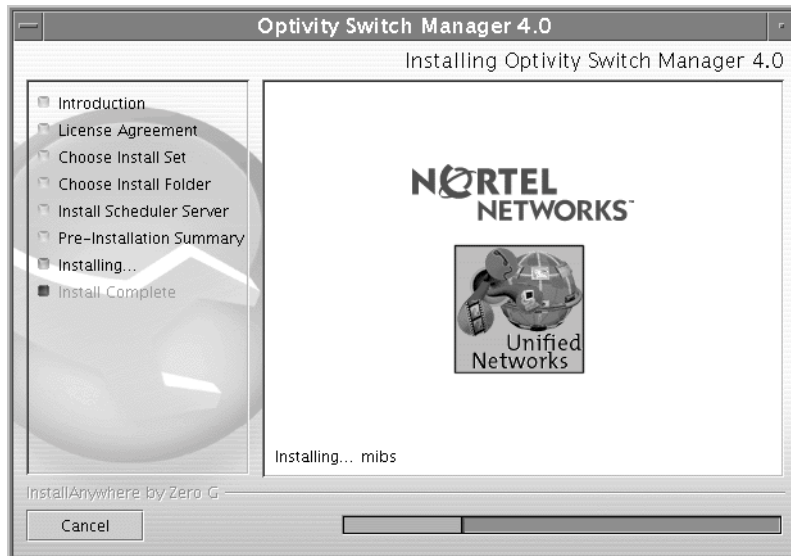


- 7 The Choose Install Scheduler Server dialog box opens (Figure 21)
- 8 Select **Restore Default Folder** or click **Choose** to select the storage path.
You can not have spaces in the path name.
- 9 Click **Next**.

Figure 22 Pre-installation Summary dialog box

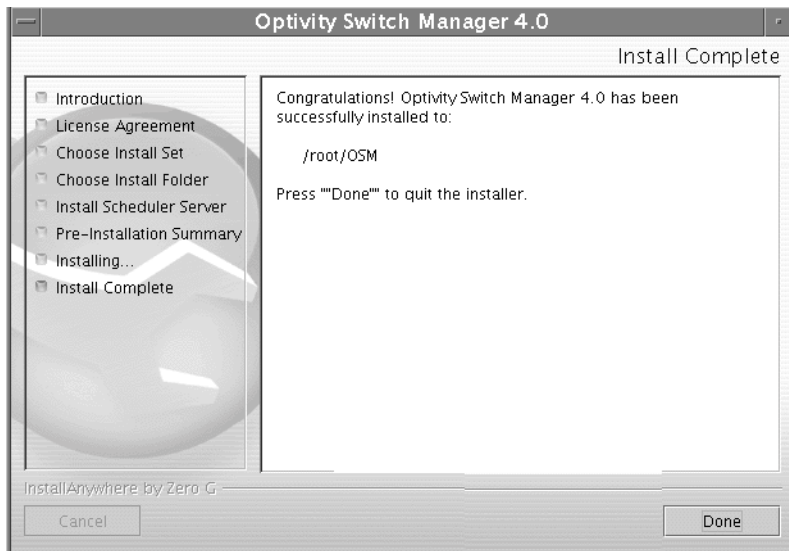
- 10** Select your shortcut path(s).
- 11** Click **Next**.
- 12** The Pre-Installation Summary dialog box opens ([Figure 22](#)).

Figure 23 Installing Optivity Switch Manager dialog box



13 Click **Install**.

14 The installation process begins (Figure 23)

Figure 24 Installing Complete dialog box

15 When the installation is complete, the Install Complete dialog box opens (Figure 24).

16 Click **Done**.

Launching Optivity Switch Manager

To start Optivity Switch manager in a SunOS/Solaris and Linux environment, enter the following command:

```
cd OSM_INSTALLED_DIRECTORY (for example, /usr/OSM/4000)
```

```
./OSM
```

Launching Device Manager

To access the Device Manager, from the Optivity Switch Manager, you double-click on a device or select the Device Manager icon from the toolbar. Device Manager is automatically installed when you install Optivity Switch Manager.

To start the Device Manager separately from Optivity Switch Manager, enter the command:

```
./JDM
```

To run Optivity Switch Manager, refer to *Using Optivity Switch Manager, Release 4.0 (208963-D)*.

Launching Scheduler Server from the command line

If the *Install Scheduler Server as Daemon* option is not selected during the OSM installation process (see [page 21](#)), you can start the Scheduler Server from the command line by executing these commands:

```
cd OSM_INSTALLED_DIRECTORY (for example, /usr/OSM/4000)
```

```
cd bin
```

```
./osm_scheduler
```



Note: The Scheduler Server remains active during your login session only; if you logout, the session will terminate.
