

Strata[®] ***DK***

Digital Business Telephone Systems

**DKQuote
Release 4.x
User Guide**

Limited Warranty

This software program and the User Guide are provided “as is,” without warranty of any kind, either expressed or implied, including, but not limited to the implied warranties of merchantability and fitness for a particular purpose. The entire risk as to the results, quality and performance of this program is assumed by you.

Publication Information

Toshiba America Information Systems, Inc., Telecommunication Systems Division, reserves the right, without prior notice, to revise this information publication for any reason, including, but not limited to, utilization of new advances in the state of technical arts or to simply change the design of this document.

Further, Toshiba America Information Systems, Inc., Telecommunication Systems Division, also reserves the right, without prior notice, to make such changes in equipment design or components as engineering or manufacturing methods may warrant.

DKA-UG-QUOTE-VA
4016143

Version A1, May 1999
Version A, November 1998

© Copyright 1999

Toshiba America Information Systems, Inc. Telecommunication Systems Division

All rights reserved. No part of this manual, covered by the copyrights hereon, may be reproduced in any form or by any means—graphic, electronic, or mechanical, including recording, taping, photocopying, or information retrieval systems—without express written permission of the publisher of this material.

Strata is a registered trademark of Toshiba Corporation. Stratagy is a registered trademark of Toshiba America Information Systems, Inc. Strata AirLink, Call Center Viewer, Insight DK and Insight DK Plus are trademarks of Toshiba America Information Systems, Inc.

Trademarks, registered trademarks, and service marks are the property of their respective owners.

Contents

Introduction

- Organization iii
- Conventions..... iii
- Related Documents v

Chapter 1 – The Grand Tour

- User Levels, IDs, & Passwords 7
- Basic Operation 9
 - Task Messages and Online Help 9
 - Existing Parts 10
 - Future Parts 10
 - Additional Parts 10
 - Installation Charges 10
 - Final Quotation 10
- Main Menu 11
 - Screen Variations 12
- Toolbar 12
- Status Bar 12
- Keyboard Navigation 13
- Mouse Navigation 13
- Online Help 14
- Quote Screen 14
- Screen Messages 15
 - Configuration Conflict Message 15
 - Warning Message 16

Chapter 2 – Installation

- Step 1: Before You Begin 17
- Step 2: Getting Started 17
 - Non-Autorun Operation 18
 - Speeding Up Operation 19
 - Uninstalling Acrobat Reader 19

Chapter 3 – Using DKQuote

- Log On 21
- Log Off 22
- Generating Quotes 22
 - Existing Parts 24

Additional Parts	24
Equipment Selection.....	24
Final Quote Worksheet.....	24
New Quotes	24
Modifying Existing Quotes	28
Making Equipment Selections	28
Using Existing Parts.....	29
Ordering Additional Parts	30
Transfer In.....	32
Transfer Out	32
Installation Charges.....	33
Final Quote Worksheet	35
Saving/Printing a Quote	36
Configured Parts List	37
PCB Placement Guide	37
Pricing Menu.....	38
Price List.....	38
Report Menu.....	39
Update Menu.....	43
Setup Menu	44

Chapter 4 – Customizing DKQuote

Pricing Menu.....	47
Category Pricing.....	47
Price Definitions.....	48
Parts/Price Setup Screens	48
Hiding Price Categories.....	51
Creating/Changing Names and Descriptions.....	51
Parts/Price Setup.....	52
Required Add-on Parts Setup	55
Optional Add-on Parts Setup.....	56
Hiding Obsolete Parts	59
Changing National Accounts Description and Price	59
Dealer Installation Setup	60
Question File Setup	61
Update Menu.....	61
User Password Level.....	62
Customized Splash Screen	64

Appendix – Final Quote Printout

Cover Sheet	65
Parts List (Quote Number: Example).....	66
Installation Charges.....	67
PCB Placement Guide.....	67
Selection List (Quote Number: Example).....	69

Index	73
--------------------	-----------

Introduction

This guide provides installation and operating instructions for the DKQuote software application. It is written for dealers and their sales/technical staff.

Organization

This guide is divided into the following chapters:

- ♦ **Chapter 1 – The Grand Tour** gives a general description of the capabilities, screen conventions, and basic operations of the DKQuote software.
- ♦ **Chapter 2 – Installation** provides step-by-step installation instructions for the DKQuote software onto your PC and/or network.
- ♦ **Chapter 3 – Using DKQuote** provides instructions on how to prepare and print a quote and outlines available menu options.
- ♦ **Chapter 3 – Using DKQuote** describes instructions for customizing quotes; using price and parts lists; adding/changing/deleting user IDs and passwords; and preparing installation disks with the customized information for sales/technical staff.
- ♦ **Appendix – Final Quote Printout** provides a copy of a sample printout after the final quote is completed.

Conventions

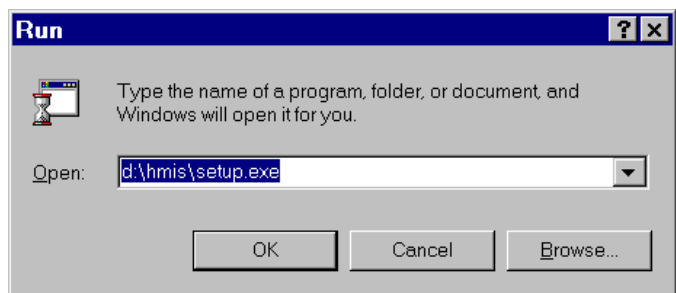
This guide uses these conventions:

➤ **Denotes a procedure**

1. *Actions* you perform appear in this column. They can consist of either a single step or a series of numbered steps.

The *immediate response to the action* performed appears in this column. Additional notes and comments are also included.

2. When the action you perform results in a screen, menu, dialog box, etc., the example to the right displays.



Note Elaborates specific items or references other information. Within some tables, unnumbered notes apply to the entire table and numbered notes apply to specific items.

Important! *Calls attention to important instructions or information.*

CAUTION! **Advises you that hardware, software applications or data could be damaged if the instructions are not followed closely.**

Courier shows a computer keyboard entry or screen display. “Type” indicates entry of a string of text. “Press” indicates entry of a single key. Example: Type **prog** then press **Enter**.

Times Roman words that are capitalized represent a specific dialog box button. For example: Transfer button.

“Click” means to press and then release the mouse button without moving the mouse.

+ shows a multiple PC keyboard or phone button entry. Entries without spaces between them show a simultaneous entry. Example: **Delete+Enter**. Entries with spaces between them show a sequential entry. Example: **# + 5**.

~ means “through”.

➤ denotes the step in a one-step procedure.



represents an icon button on a feature toolbar. When you click on this icon, it achieves the same result as the step that it appears next to.

see [Figure 12](#)

Grey words within the printed text denote cross-references. In the electronic version of this manual (Strata DK Library CD-ROM or FYI Internet download), cross-references appear in blue hypertext.

Related Documents/Media

Refer to the following documents for more information.

- ♦ **Strata DK Price Lists** includes Authorized Toshiba Dealer, National Accounts, Authorized Communications Schedule – GSA.
- ♦ **Strata DK Programming Manual** provides all instructions necessary to program the system and system record sheets.
- ♦ **Strata DK Installation & Maintenance Manual** provides installation instructions for configuring and installing Strata DK systems.
- ♦ **Strata DK Library CD-ROM** enables you to view, print, navigate and search publications for Strata DK14, DK40 and DK424 digital business telephone systems.

DKQuote Release 4.x is a powerful interactive software application, compatible with Microsoft® Windows® 98, 95 or Windows NT® 4.0. The software guides you through the configuration of a Strata DK system and prepares a dealer worksheet and Printed Circuit Board (PCB) placement diagram. It offers many advantages and provides your customers with quick, accurate, and up-to-date component and pricing information for all Strata DK configurations.

DKQuote for DK Release 4.x configures Strata DK14, DK40, DK40i, and DK424 systems with the proper processors depending upon the options that you choose during the quote process. You do not have to know what kind of system you want when you begin the quote process, only the station equipment, CO line types, and feature options.

Important! *When DK424 system quotes are generated, DKQuote configures Release 4.x RCTU processors unless equivalent Release 2.0 or 3.0 RCTU processors are selected from the Existing Parts menu.*

Your generated quotes can be viewed and printed, saved in a database, and transferred to and from the hard/floppy disk drives, network drive, and/or other users. Dealers can provide sales/technical staff with customized information from DKQuote for the quote process.

DKQuote enables you to completely customize quotations to suit your exact needs. New parts are added, existing parts hidden (so they do not display in your quotes), multiple pricing schedules created, and part names changed.

If you have used 424Quote Release 1.0, you will find the basic operation for processing quotes in DKQuote Release 4.x is the same.

Note Quotes generated by 424Quote Release 1.0 are compatible with DKQuote Release 4.x. 424Quote Release 1.0 is not overwritten by DKQuote Release 4.x, so existing quotes are not erased and you can still access your existing 424Quotes.

This version of DKQuote configures new DK features, such as ISDN PRI, BRI (S/T or U interfaces), E911 CAMA lines, HMIS, Call Center Viewer, and the DKT2001 Digital telephone. It does not configure Strata AirLink™ Wireless systems or handsets, but these parts can be selected from the DKQuote Additional Parts list and added to your quote.

User Levels, IDs, & Passwords

User levels, IDs, and passwords are assigned by the System Administrator and enables access to various menu options. The IDs and passwords are assigned to Level 1, 2, or 3.

For example, technicians and sales personnel cannot set up the passwords, change parts pricing (except to print cabinet diagrams) or Dealer discount functions. [Table 1](#) lists the available options from the Main Menu. The check mark (✓) indicates the menu option that each level can access. For example, all levels can access the New Quote menu options.

Table 1 Levels and Main Menu Options

Main Menu Bar	Master (Level 1)	Sales (Level 2)	Tech (Level 3)
Quote Menu			
New Quote	✓	✓	✓
Existing Quote	✓	✓	✓
Transfer In	✓	✓	✓
Transfer Out	✓	✓	✓
Exit	✓	✓	✓
Pricing Menu			
Pricing List	✓	✓	
Price Category Setup	✓		
Parts/Price Setup	✓		
Required Add On Parts Setup	✓		
Optional Add On Parts Setup	✓		
Obsolete Parts Setup	✓		
Nat'l Accounts Installation Setup	✓		
Dealer Installation Setup	✓		
Question File Setup	✓		
Report Menu			
Parts List	✓	✓	
Question File	✓	✓	✓
Customer List	✓	✓	✓
Print/Save Quote	✓	✓	✓
Update Menu			
Backup Dealer Price/Parts	✓	✓	✓
Restore Dealer Price/Parts	✓	✓	✓
Restore Toshiba List Prices	✓	✓	✓
Backup to Installation Disk	✓		
Setup Menu			
Customer	✓	✓	✓
Company General Info	✓	✓	
User Password Level	✓		
Customized Splash Screen	✓		

Table 1 Levels and Main Menu Options *(continued)*

Main Menu Bar	Master (Level 1)	Sales (Level 2)	Tech (Level 3)
View Menu			
Toolbar	✓	✓	✓
Status Bar	✓	✓	✓
Help Menu			
Help Topics	✓	✓	✓
About DKQuote	✓	✓	✓

Basic Operation

DKQuote configures customized quotes by using the information supplied by you in the setup process. The quotes can be viewed, printed, and saved.

The process of configuration and generation of a quote starts by reviewing the following basic questions, even if existing parts are used.

- ♦ How many digital telephones and CO lines do you require?
- ♦ Are there any customer-owned parts (existing parts) that you want to use on a no-charge basis?
- ♦ What account category do you want to use for pricing?
- ♦ Are there any used parts (in your stock) that you want to use for a specified price?
- ♦ Who will supply the cable—the customer or dealer?

Once you have reviewed these questions, you are ready to begin the configuration of the required cabinets and PCBs.

Task Messages and Online Help

DKQuote displays task and help messages during the quote process. It prepares your quote by presenting a series of screens. Each screen must have a specific number of selections even when existing parts are used. When you are finished, DKQuote automatically configures the cabinet and PCBs that are required based on your selections. Some fields required a numeric value input, while others require a “yes” or “no” answer (toggled by using the space bar).

Online Help is available in each screen by either clicking the Help button or pressing F1. The appropriate topic displays giving you information about the screen. There is also Help available from the Main Menu. When selected, all of the Help topics all displayed in a list that you can easily access by clicking on the topic you want to view. You can search the list by using the Find feature or the Index.

Existing Parts

If you are going to use existing parts (used parts in stock), they are selected from the Existing Parts list. Existing telephones and consoles are always included in the configuration. Existing PCBs are only configured if they support the telephone and CO line requirements of the configuration.

Release 2.0 and 3.0 RCTU processors are used in place of equivalent size Release 4.0 processors if the appropriate RCTU PCBs are selected in Existing Parts.

Note Toshiba published list prices can be updated while maintaining current Dealer Discounts and Markups.

Future Parts

Future parts (added for future growth) should be considered and added as existing parts. Telephones, PCBs, and cabinets, selected from the Existing Parts list, are added at no charge because the selected price for each item is set to \$0.00. They are also configured into the Strata DK system cabinets.

Additional Parts

Once the configuration is complete, you can enter additional parts that are not included in the basic configuration (spare parts, voice mail equipment, and documentation). These parts are not configured in the cabinets, but are added to the final quote parts lists.

Installation Charges

You can also enter itemized installation charges, including taxes and appropriate quantities that are applied to the across-the-board cost of all parts (see [Page 33](#)). If National or GSA Accounts is selected in the Quote Setup screen, you must indicate who supplies the cable—the dealer or the customer. If the cable is customer supplied (see levels below), the installation price is reduced by \$25.00 per cable run.

Levels of cable for Voice/data, shielded, and Plenum are:

- ♦ Level III - duplex jacks (4 pair)
- ♦ Level IV - quad jacks (4 or 6 pair)
- ♦ Level V - quad jacks (4 or 6 pair)

Final Quotation

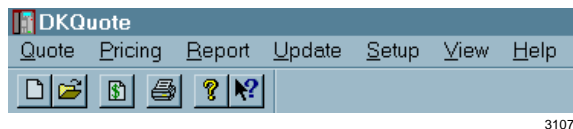
Once your system configuration is complete, you can view, save, and/or print the:

- ♦ Quote
- ♦ Summary sheet
- ♦ Itemized installation and parts prices
- ♦ Diagram of the configured cabinets
- ♦ PCB placement guide

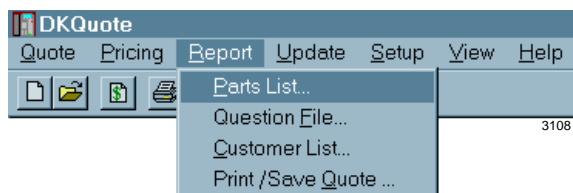
Individual or group quotes are transferred from one PC to another by storing and retrieving the quotes from a floppy disk, hard-disk or network drive. The final quote parts lists and a cover sheet can be saved to a file and re-opened in a spreadsheet application, such as Microsoft Excel® for editing and formatting of the data.

Main Menu

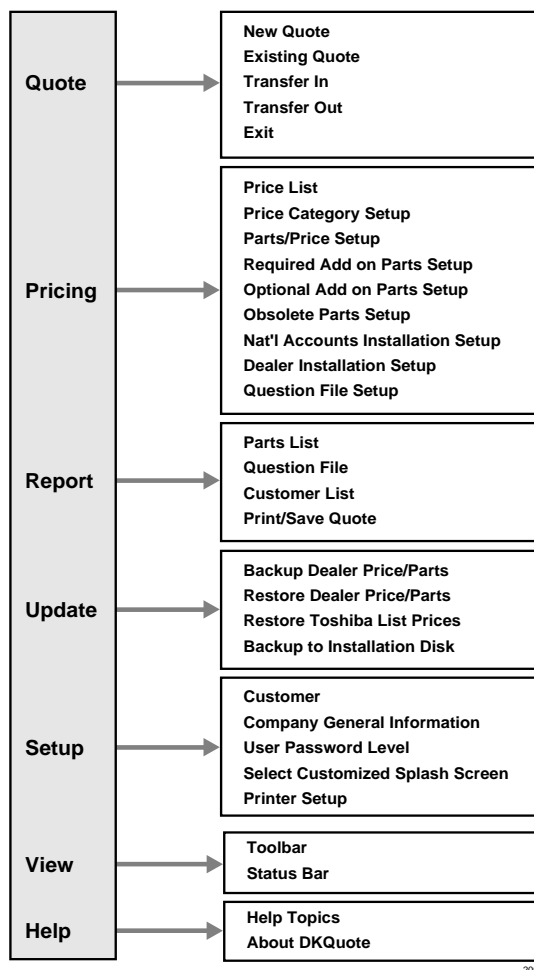
DKQuote is “menu driven” and very easy to use. All basic operations are executed from the Main Menu bar (shown at right) that displays across the top of your screen.



When you select one of the Main Menu submenus, a drop-down menu displays all of the available options (shown at right).



The figure below lists all of the drop-down menus that are accessed from the Main Menu bar.



2094

Screen Variations

DKQuote screens may vary from those shown in this document because changes are made frequently.

Toolbar

The DKQuote Toolbar™ (shown at right) displays just below the Main Menu bar. It provides shortcuts to the most frequently used commands.









2322

You can click and drag the Toolbar to any position in your window. When you exit DKQuote, the Toolbar returns to its original position.

► To display or hide the Toolbar

- Click Toolbar (toggles) from the View menu.

Each Toolbar icon is explained below.

CLICK	To
	Open a new quote.
	Open an existing quote. An Open dialog box displays, in which you can locate and open the desired quote.
	Open the Price List screen that lists all parts and prices.
	Display the print/save dialog box. You can select Save to File to save existing quotes to a file (i.e., Final Quotes Parts List and quote cover sheet) or Print to printer.
	Display program information on DKQuote (e.g., version number).
	Display pop-up Help topics – often called “What’s This?”.

Status Bar

The Status Bar displays at the bottom of the DKQuote window (shown below). The left area of the Status Bar shows the menu items that you point to using your mouse. The right side of the Status Bar shows the date and time.



2243

► To display or hide the Status Bar

- Click Status Bar from the View drop-down menu.

Keyboard Navigation




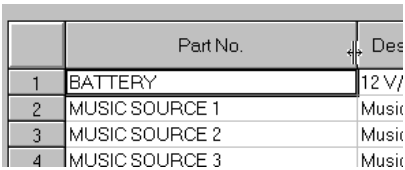
The following describes how to navigate within the DKQuote program using your keyboard.

KEYBOARD KEYS	DESCRIPTION
Alt + [Letter]	Selects Main Menu items. Moves directly to the item with the underscore mark. For example, pressing Alt + r in the Main Screen displays Report options.
[Letter]	Selects pull-down menu items. Pressing the underscored letter of an item on your keyboard, opens that item.
Tab	Moves forward from section to section, or button to button in screens and dialog boxes.
Shift + Tab	Moves backwards from section to section or button to button in the screens and dialog boxes.
Alt + Tab	Moves between open application windows (Windows feature).
←→	Moves the highlight left/right.
↑↓	Moves the highlight up/down in most instances. In some screens, these keys are not functional. The Tab and Shift + Tab keys are also used to move the highlight up/down.
Enter	Moves the highlight to the next field in most instances. In some screens, it closes the screen.
Page Up/Page Down	Scrolls up/down through a list.
Esc	Returns to the previous dialog box.
Spacebar	Toggles between Yes/No in the parts configuration dialog box. Toggles check mark ON/OFF in the Hide column of specific screens.

Mouse Navigation

When you use the mouse, an on-screen arrow or cursor moves as you move the mouse. The resulting actions are described below.


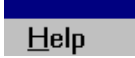

MOUSE	DESCRIPTION
Move the cursor to an item in the Main Menu, then click the mouse button. If there is more than one button, click the left button.	Highlights Main Menu item before you click. When you click the mouse button, the selection opens. When you select on-screen buttons, you do not have to press the Enter key, just double-click the mouse button.
Double-click the mouse button. If there is more than one button, double-check the left button.	Highlights and opens the item.

MOUSE	DESCRIPTION
<p> Scroll arrow →  Scroll bar →  Scroll arrow →  </p>	<p>Scrolls up or down.</p>
	<p>Resizes the column width. Place the double-headed cursor on the line between two columns. Click and hold the left mouse button. Drag the line left or right to change the column width.</p>

Note For more information on adjusting Windows controls for the DKQuote program, such as keyboard and mouse speed and colors, see your Windows 98, 95 User Guide or Help in the Windows 98, 95 Start button.



Online Help




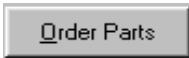
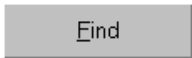
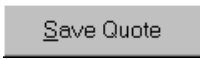
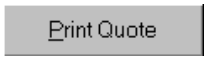



DKQuote Online Help is built into the software and provides help from both the Main Menu and individual screens. The functions are described below.

HELP FUNCTION	DESCRIPTION
	<p>Accesses What's This? Help. When the cursor changes to a question mark, click the topic, a menu option or any other area, that you want help on. The topic displays.</p>
<p>F1</p>	<p>Opens the specific topic you have highlighted by pressing F1.</p>
	<p>Accesses Online Help from the Main Menu that contains:</p> <ul style="list-style-type: none"> • Contents – lists main topics (e.g., Quote Menu, Update Menu, etc.). • Index – lists all topics in alphabetically order. • Find – searches for available topic.
	<p>Displays specific information about the dialog box currently open.</p>

Quote Screen

The following buttons display at the bottom of the quote screens during the quote process.

CLICK	To
	<p>Process all data and saves to memory. The next screen in the quote generation process displays.</p>
	<p>Return to the previous screen. Current selections are saved in memory before the screen returns to the previous one.</p>

CLICK	To
	Discard the changes in the current screen.
	Discard all of the selection changes in all the pages for the session.
	Display configured cabinet drawings.
	Display the Parts Selection screen at the end of the configuration process for ordering additional parts that were not configured.
	Search for a part number by entering all or part of the number.
	Save and add the current quote to the Existing Quote list.
	Print or save a quote to a file. Save to File creates a file containing the Configured Parts List and Final Quote cover sheet. This file can be modified in MS Excel.
	Close current quote session.
	Start the saving or transferring of files.
	Cancel an operation or any changes made and closes the screen.

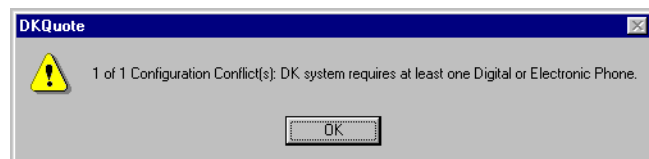
Screen Messages

There are two displayed messages that can occur when you adding or modifying a quote – configuration conflict and warning. Both appear after you click Process.

Configuration Conflict Message

If you have entered an item that creates a conflict, you are prompted with a configuration conflict message (shown at right).

Click OK to return to the screen where you must correct the conflict. Once the correction is made, click Process to proceed with the quote.



2309

Important! *Since the information is critical to the completion of the quote, you cannot continue until the conflict is resolved.*

Warning Message

A warning message (shown at right) occurs when you have not completed all the requirements in the previous screen.

The messages display when the information is needed, but not critical to the completion of the quote.

If you click Yes in this screen, DKQuote returns to the screen where you can correct the problem. If you click No, DKQuote continues to process the quote without the information.



2311

This chapter provides installation steps for DKQuote, Release 4.x. DKQuote has one installation CD-ROM.

Step 1: Before You Begin

The following *minimum* specifications are required for optimum performance of DKQuote:

- ♦ Pentium® PC
- ♦ 110MB hard disk space (100MB free disk space for DKQuote operation and 10MB for DKQuote files)
- ♦ 16MB RAM
- ♦ CD-ROM drive (4x speed or better)
- ♦ 640 x 480 resolution, 256 colors, VGA monitor (1024 x 768, 65K + colors recommended)
- ♦ Microsoft Windows 98, 95, or Windows NT 4.0
- ♦ Adobe™ PostScript® or PCL printer (for printing documents)
- ♦ Adobe Acrobat® Reader program (included for viewing documents)

Step 2: Getting Started

Important! *Exit all Windows programs before inserting the CD-ROM for installation.*

1. Insert this CD-ROM into your CD-ROM drive.

Acrobat Reader automatically runs and loads the Home Page. This may take awhile on some systems. You can perform all the functions on this CD-ROM from the Home Page.

Notes

- For security purposes, Acrobat Reader may confirm certain selections after you make them. When prompted, click Yes, or, if you do not want to be prompted again, click All.
- Autorun may not be enabled on your PC and may not load the Home Page after you insert the CD-ROM. If this happens, see [“Non-Autorun Operation” on Page 18.](#)

2. From the Home Page, make a selection:

Click “Install DKQuote” to install the program from the CD-ROM to your hard drive.

Click “Make Floppy Disks” to copy DKQuote to floppies.

Click “View DKQuote User Guide” to view the user guide.

Click “Install Acrobat Reader” to install Acrobat Reader on your hard drive.

Click “Quit to Desktop” to leave the Home Page and exit the Acrobat Reader program.

Non-Autorun Operation

If the Home Page did not load after you inserted the CD-ROM into your CD-ROM drive, follow these steps:

1. Click Start, Run, then Browse.
2. Select your CD-ROM drive from the Look in: pull-down list.
3. Locate and double-click the AcroRd32 folder.
4. Double-click the AcroRd32.exe file.
5. From Acrobat Reader, click File, then Open.
6. Click the Up One Level folder (just to the right of the Look in: pull-down list).
7. Locate and double-click homepage.pdf.

Acrobat Reader opens.

The Home Page loads. See [“Getting Started” on Page 17](#) and make a selection.

Speeding Up Operation

You may wish to speed up Acrobat Reader by installing and running it from your hard drive. Follow these steps:

1. Insert this CD-ROM into your CD-ROM drive, Acrobat Reader automatically runs off the CD-ROM and loads the Home Page.
1. Click the Install Acrobat Reader button. Follow the prompts to install the program.
2. After installation, click Quit to Desktop and exit the Home Page.
3. Click Start, Programs, then Adobe Acrobat group.
4. Click Acrobat Reader 3.01.
5. Click File, then Open.
6. Select your CD-ROM drive from the Look in: pull-down list.
7. Locate and double-click homepage.pdf.

Note If Autorun is not enabled on your PC, click Start, Run, the Browse. Select your CD-ROM drive from the Look in: pull-down list. Locate and double-click the AcroRd32 folder, then locate and double-click Setup32.exe and follow the prompts.

Acrobat Reader opens from your hard drive instead of the CD-ROM.

The Home Page loads. See [“Getting Started” on Page 17](#) for available selections.

Uninstalling Acrobat Reader

1. Click Start, Settings, then the Adobe Acrobat group.
2. Click Uninstall Acrobat Reader 3.01.
3. Click Yes.

This message displays: “Are you sure you want to completely remove the selected application and all of its components?”

The program and all of its components are removed.

Important! *The Dealer Discounts and Markups, passwords, Dealer custom “add-on” parts and installation items should have been added to the Installation Disk #4 by the Administrator. If these have not been added, you must obtain an Update Price/Parts floppy disk from the Administrator to update these items before generating quotes. To install the disk, use the Restore Dealer Price/Parts option under the Update Menu (see [“Update Menu” on Page 43](#) for instructions).*

This chapter describes how to use DKQuote including logging on and off, generating quotes, and available features of the menus.

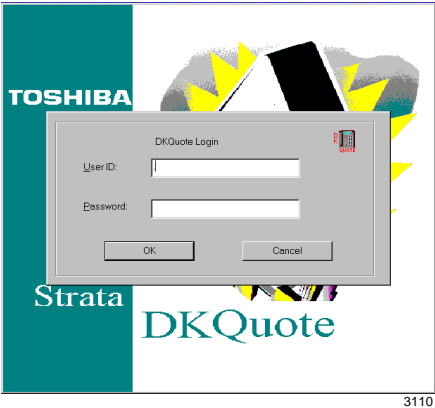
Log On

Once you have installed the DKQuote program, you must log on, using your password. See your System Administrator for additional information.

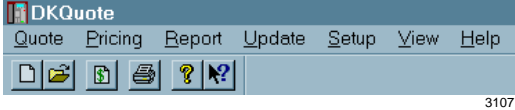
1. From the Windows desktop, double-click DKQuote.



2. Enter your User ID and password.



Note The default log on User ID and Password is “master.”

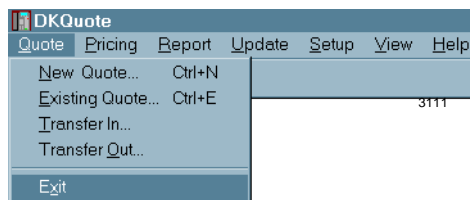


If you are the first person to log on after a new installation, the Company General Information screen displays. If you do not want to complete this screen at this time, you can access it anytime from the Setup Menu.

Log Off

When you have completed your DKQuote session, you must log off.

1. Highlight Quote from the Main Menu bar.



2. Click Exit.

You are returned to Windows.

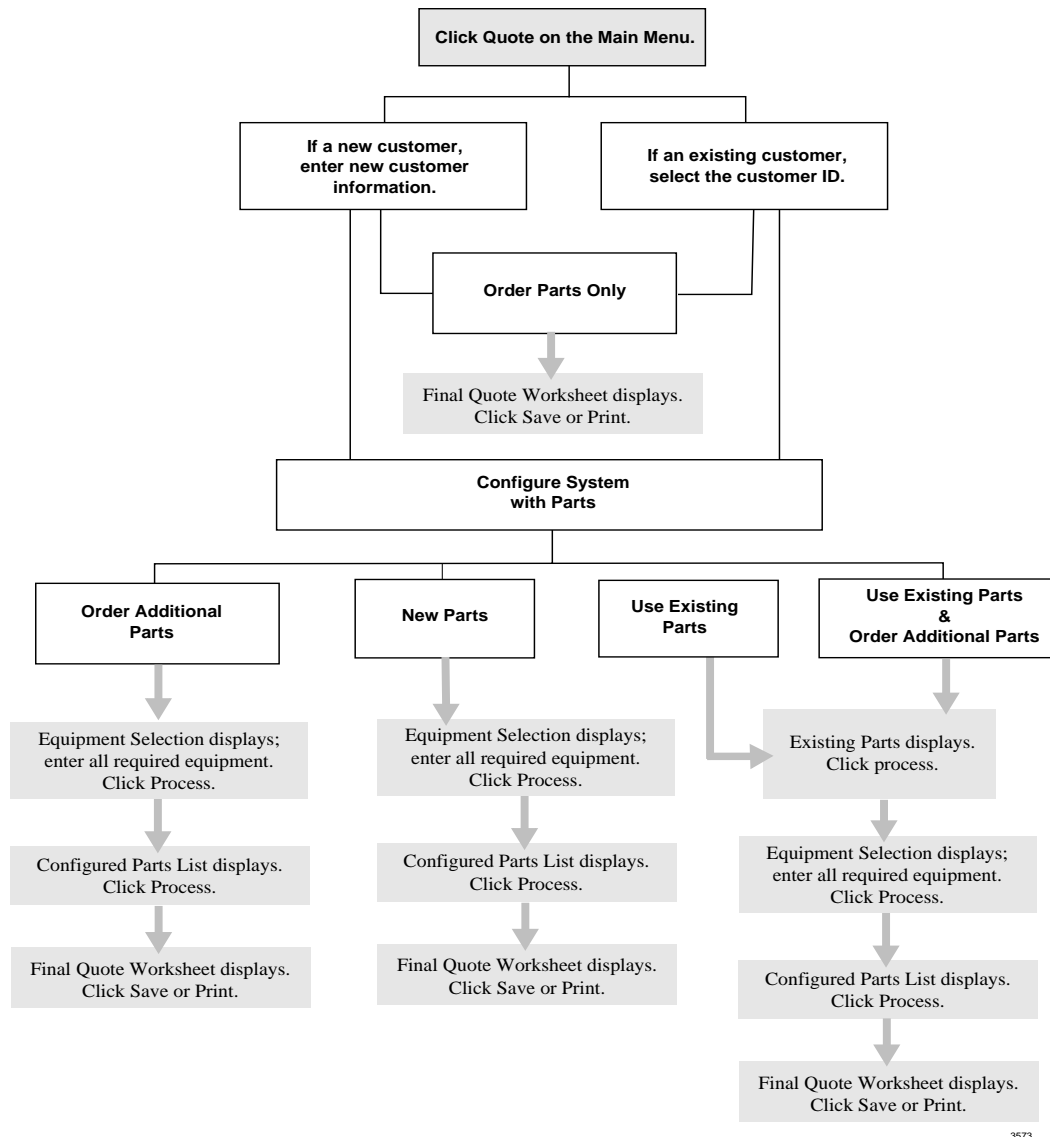
Generating Quotes

DKQuote configures systems quickly and efficiently. It determines what hardware is required to meet your customer's needs from the information that you have input into various dialog boxes and screens. It prepares a configuration and quote based on as much or as little information as you supply.

The quote process begins with the Quote Setup dialog box that has data fields for the following:

- ♦ Customer ID
 - ♦ For a new customer, enter the name before going to the next field. DKQuote retains the name when you click OK.
 - ♦ For an existing customer, highlight the name in the drop-down menu.
- ♦ Quote Number – automatically assigned by DKQuote
- ♦ Basic Configuration (with new parts and/or)
 - ♦ Use Existing Parts
 - ♦ Order Additional Parts
 - ♦ Order Additional Parts Only
- ♦ Account Category

The figure below illustrates the stages of the quote process.



3573

At any time during the quote process, you can click Previous to return to the prior screen to modify your prior selections. Once you have selected the parts for your system configuration, click View Diagrams to view the cabinet and PCB configuration diagrams.

When you are finished, you can save the quote to the DKQuote local directory, save it to a file (with *.fqt extension) to use with another program (e.g., Excel), or print it. If you decide to print, you can select:

- ♦ All (includes Final Quote Worksheet, Configured Parts List, and the PCB Placement Guide).
- ♦ Parts/installation information only
- ♦ Cabinets/diagram information
- ♦ Questions list
- ♦ Don't Print Items with 0 Quantities

- ◆ Don't Print Questions Answered with No or 0 Quantities
- ◆ Portrait or Landscape printing

DKQuote also enables you to link all quotes created for a customer to a single customer ID code. This simplifies tracking and retrieval, as well as quote maintenance.

Existing Parts

Existing parts include all current and many discontinued Toshiba parts that can be configured in Strata DK systems. See [“Using Existing Parts” on Page 29](#) for step-by-step configuration instructions when processing a new quote.

Additional Parts

Additional parts are parts that are needed as spares for system maintenance and any Toshiba or Dealer custom parts that are not configured in Strata DK cabinets (for example, batteries). See [“Using Existing Parts” on Page 29](#) for more information.

Equipment Selection

DKQuote determines what hardware is required and calculates the cost based upon the equipment you select. There are ten categories from which you configure the basic system. See [“Making Equipment Selections” on Page 28](#) for step-by-step instructions on selecting equipment for your specific configuration.

Final Quote Worksheet

DKQuote calculates the number of cabinets, slots, processors, and the prices for each and displays the Final Quote Worksheet. You can input additional charges as appropriate. For more information, see [“To enter charges” on Page 35](#).

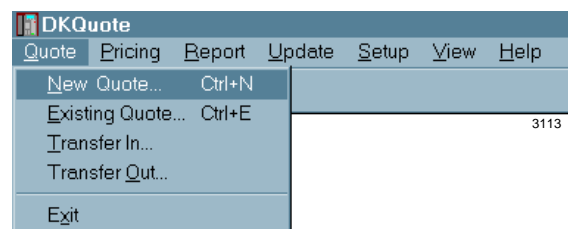
New Quotes

A new quote starts by double-clicking New Quote in the Quote drop-down menu (shown at right). You can use new parts, existing parts, and/or additional parts. All user levels can access this menu.

If there are conflicts with the equipment and parts selection, the program prompts you with a message. You may be prompted to choose a larger processor, if you selected this as an option during the quote process.

You can also choose the account category that you want to use for pricing or create a new one. Some of the DKQuote default categories are:

- ◆ Dealer, Regular Account
- ◆ National Account (MFG, schedule A/B or C)
- ◆ General Service Administration (GSA)



► To create a new quote using new parts



1. Click New Quote on the Toolbar

...or Quote on the Main Menu and New Quote.

3112

2. Enter a new customer ID

Note The name is the only requirement to creating a new record. Valid entries can be up to 34 alphanumeric characters. No spaces are allowed.

3114

3. Select the DKQuote assigned quote number
...or select an existing ID.
...or enter a different, unique number.

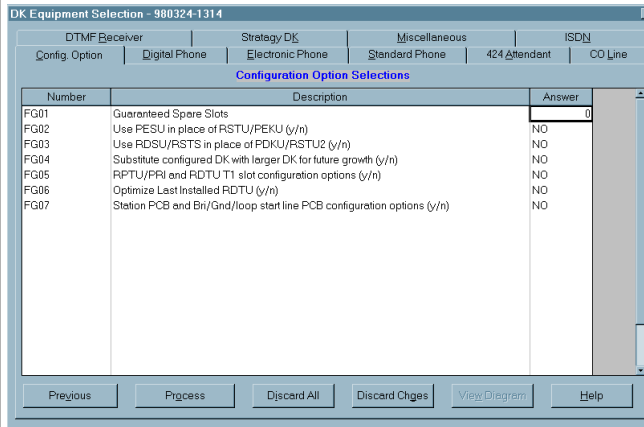
Valid entries are up to 15 alphanumeric characters. No spaces are allowed.

4. Click Configure System with Parts.
5. Select an Account Category from the drop-down menu.
6. Click OK.

Note If you do not click any other options, the Existing Parts screen displays.

There can be up to 11 available Account Categories (price schedules), depending on how your Administrator set up the application.

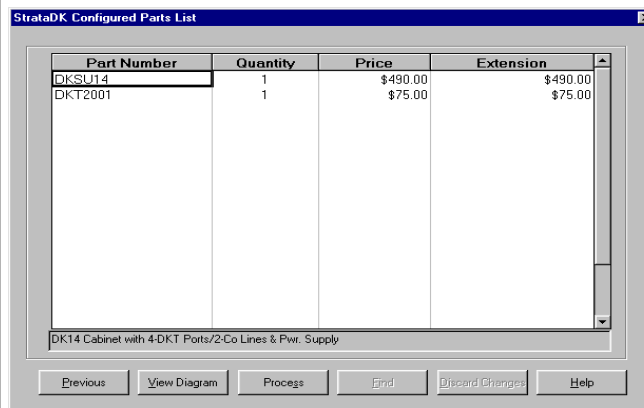
Important! *Once you select OK, your selections cannot be changed for the current quote.*



3121

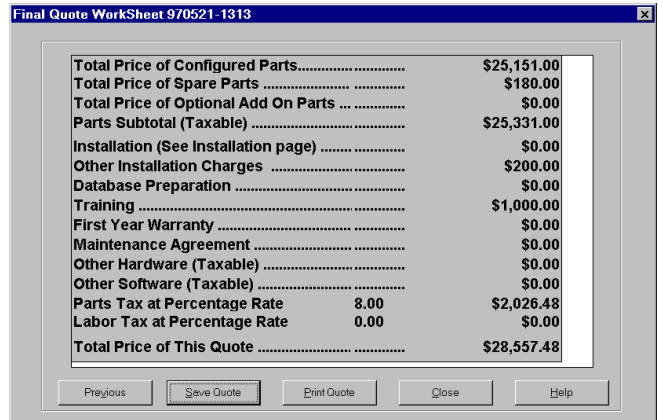
7. Enter the equipment quantities in each tab (11).
8. Click Process ...or Discard All.
9. Click OK.

Note If you click Discard All, all of your input is deleted.



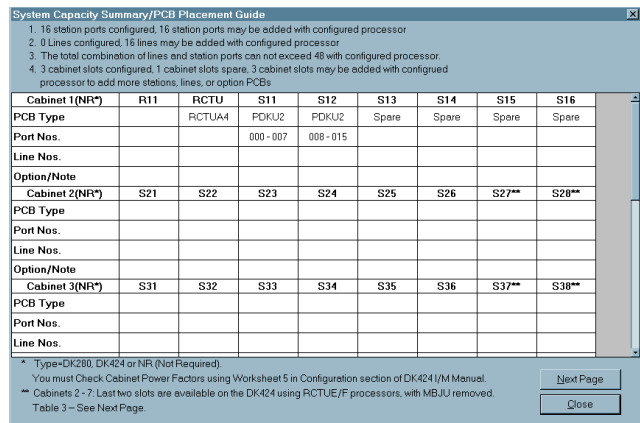
3574

10. Click Process



2303

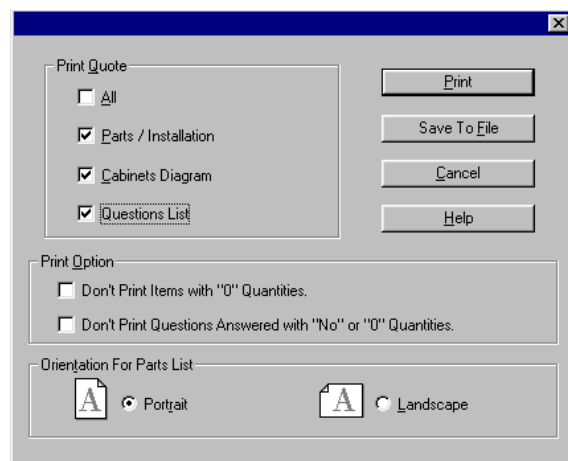
...or View Diagram.



3115

11. Click Save Quote
...or Print Quote.

The Quote is saved to the DKQuote default directory.



3572

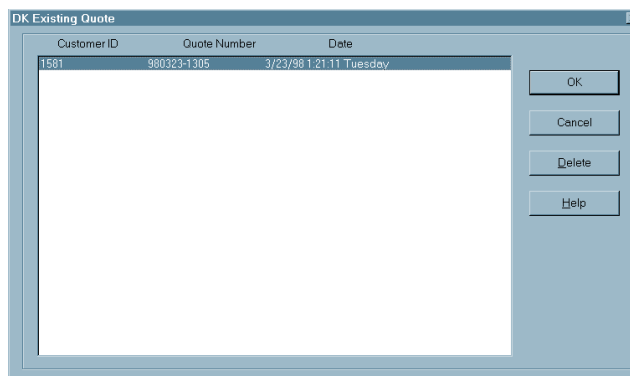
Modifying Existing Quotes



1. Click Existing Quote from the Toolbar

...or click Quote from the Main Menu and Existing Quote from the drop-down menu.

2. Highlight the Quote Number.
3. Select OK.



3124

The quote displays at the Quote Setup screen. You can modify the selected quote or change the quote number to create a new one.

Note The original quote remains intact with its original quote number.

Making Equipment Selections

There are 10 categories of equipment in the Equipment Selection screen that you use to configure the basic system:

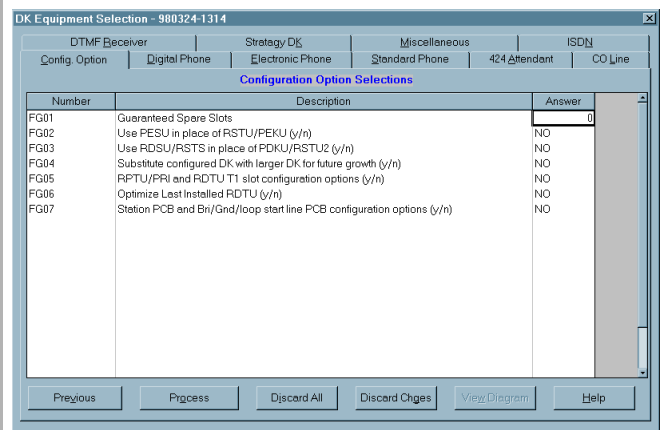
- ♦ Digital telephones
- ♦ Electronic telephones
- ♦ Standard telephones
- ♦ Attendant Consoles
- ♦ CO lines
- ♦ DTMF receivers
- ♦ Auto Attendant
- ♦ Stratagy DK
- ♦ Feature option

You also have configuration (guarantee spare slots, PESUs, RDSUs, etc.) and feature options (headsets, SMDI, HMIS, OAI, etc.).

You can print a list of the categories from the Final Quote Worksheet screen, or you can print a copy of the DKQuote Question File, using the Report Menu.

► To select the equipment

1. Click on a tab in the Equipment Selection screen.



2. Input the quantities and prices that you want
...or toggle Yes/No.

Each field has a unique number and a default listed next to it (usually NO or 0). If the default is appropriate, leave it.

Change your entry by moving the mouse to the answer column and inputting the change. You can change the YES/NO fields by pressing the **spacebar** to toggle between YES and NO.

3. Click Process.

DKQuote can prompt you for additional information with a pop-up window.

There are two types of messages that you could see:

- ♦ Missing part – If a part is required for the configuration but you did not select it, DKQuote prompts you to include the it.
- ♦ Configuration conflict – If you exceed a maximum number of items (e.g., the maximum number of CO lines is 200), DKQuote displays a configuration conflict message.

If there are no conflicts or other messages, the Configured Parts List screen displays.

Using Existing Parts

To DKQuote, existing parts are discontinued parts and include DK280 cabinets and older RCTU processors, current parts at a modified price, customer-owned parts at no charge for DK424 upgrades, and future parts at no charge to prepare for future growth. They are selected from the Existing Parts screen.

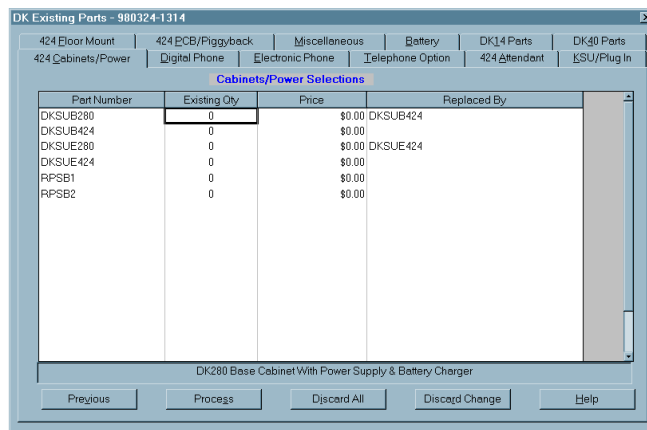
PCBs and system cabinets are used only if they are needed in the system configuration. This is determined by the selections you make during the quote process. For example, CO line PCBs are used only if the CO lines require them.

When telephones are selected, DKQuote configures the appropriate interface PCBs. The PCBs are considered as new parts unless they are selected from the existing parts list.

► To use existing parts

1. In the Existing Parts screen, enter the equipment quantities in each tab.

A brief description of the part appears at the bottom of the screen.



3120

2. Enter the price in the Price column.
3. Click Process.

Note All prices are initially set to 0.00.

The Equipment Selection screen displays.

Ordering Additional Parts

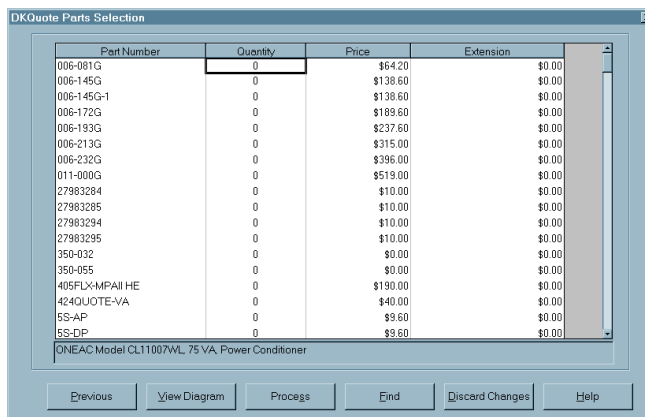
This function enables you to select parts that are needed, but are not configured in Strata DK cabinets (for example, batteries). You select these parts after processing the cabinet configuration.

Note If you selected Configure System with Parts and Order Additional Parts, the View Diagram (PCB Placement Guide) button is active on all subsequent screens once you choose your parts. If your quote is for Order Parts Only, you cannot view the placement guides.

► To select order parts

1. From the Parts Selection screen, enter the number of parts in the quantity column

A brief description of the highlighted part appears at the bottom of the screen.



3122

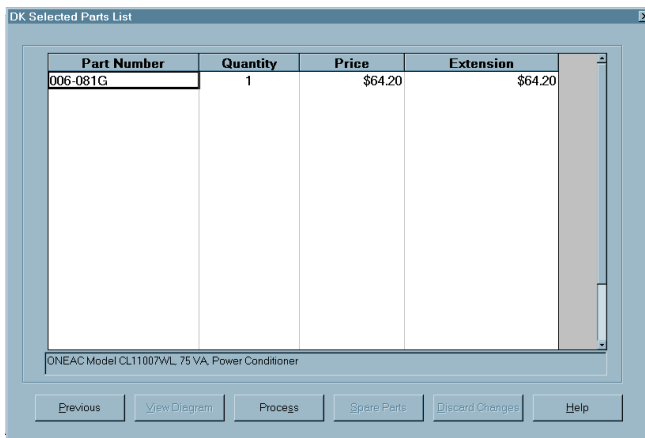
...or search for a part number, by clicking Find.

2. Click Process.

As you enter the part number, the screen highlighter jumps to the first match.

If this quote is for more than parts only, Installation Charges displays (see “Installation Charges” on Page 33).

If you selected Order Parts Only, this displays (viewing only):



3123

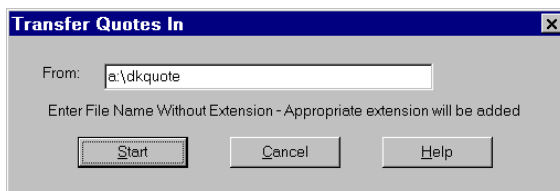
Note The spare parts selections are not included in the configuration.

Transfer In

This function copies your quotes from a floppy disk or another directory on the hard disk drive/network into the DKQuote directory. Your quote is not deleted from its current drive/path.

Important! *You must generate the quotes from the DKQuote Transfer Out option and not from the 280Quote program.*

1. Click Quote from the Main Menu and Transfer In from the drop-down menu.



2297

2. Type in the drive, directory, and file name.
3. Click Start.

Note Do not enter a file extension. DKQuote adds the appropriate extension for you. The default is **a:\dkquote**.

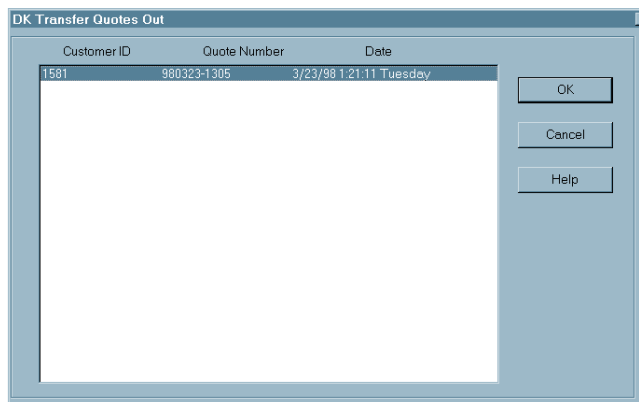
DKQuote checks the drive/path you entered in the dialog box for three quote files, *.hdr, *.pri, and *.ges. The files are copied to the default directory unless you changed it. The asterisk (*) is the entered file name.

Note To transfer in more than one quote at a time, the quotes must have been transferred out of the original DKQuote database using the same file name.

Transfer Out

This function copies your quotes to a floppy disk or another directory on the hard disk drive/network. Your quote is not deleted from the current drive/path.

1. Click Quote from the Main Menu and Transfer Out from the drop-down menu.



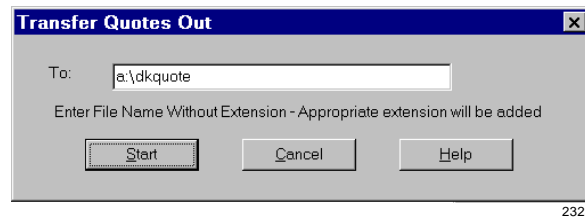
3125

2. Highlight the quote from the dialog box.

3. Click OK.

4. Type in the drive, directory, and file name.

5. Click Start.



Note Do not enter a file extension because DKQuote adds the appropriate extension for you. The default is **a:\dkquote**.

It is recommended you give the quote a file name that is easily identifiable, for example, customer name or quote number.

Whether you select one quote or several quotes to transfer, only three files are created on the drive/path you chose: *.hdr, *.pri, *.ges. The asterisk (*) is the file name entered in the Transfer Quotes Out dialog box.

Installation Charges

Installation charges display only if you selected one of the National Account categories as a price basis for your quote. If you did not select National Accounts, your dealer must include the installation description/charges, using the Dealer Installation Setup option (Pricing Menu).

You must also indicate who supplies the cable—the dealer or the customer. If the cable is customer supplied (see levels below), the installation price is reduced by \$25.00 per cable run.

Levels of cable for voice/data, shielded, and Plenum are:

- ◆ Level III - duplex jacks (4 pair)
- ◆ Level IV - quad jacks (4 or 6 pair)
- ◆ Level V - quad jacks (4 or 6 pair)

► To enter installation charges

1. Enter the number of required installations.

Installation Description	Qty	Price	Extension
Basic System and Components	0	\$270.00	\$0.00
Expansion Cabinet	0	\$90.00	\$0.00
Existing Station Cabling	0	\$67.50	\$0.00
New Station Cabling	0	\$115.00	\$0.00
Teflon Cabling	0	\$25.00	\$0.00
Off-Hook Call Announce	0	\$12.00	\$0.00
20-Button Add-On Module	0	\$12.00	\$0.00
Door Phone/Monitor Station Unit	0	\$115.00	\$0.00
Attendant Console	0	\$275.00	\$0.00
T1 Card	0	\$900.00	\$0.00
ACD	0	\$130.00	\$0.00
SMIS	0	\$245.00	\$0.00
DK280 Built-In Auto Attendant	0	\$130.00	\$0.00
Auto Attendant	0	\$130.00	\$0.00
DK-PCATT	0	\$180.00	\$0.00
DK2004-CT	0	\$115.00	\$0.00
RPCI-DI	0	\$30.00	\$0.00
RPCI-Upgrade	0	\$150.00	\$0.00

2307

The Extension (total) price changes as the quantity changes.

2. Click Process.

If you selected National Accounts in the Quote Setup screen, Cable Installation displays. Otherwise, the Final Quote Worksheet displays.

► To enter cable installation charges

1. Enter the quantity of installations (deinstalling stations, installing software, running cable, etc.).

Installation Description	Qty	Price	Extension
Amount of cable (in 100ft) over standard 150ft run	0	\$47.50	\$0.00
De-install Toshiba System K/SU	0	\$100.00	\$0.00
De-install Toshiba System stations	0	\$25.00	\$0.00
DKAdmin Software Installation	0	\$520.00	\$0.00
DKBackup Software Installation	0	\$130.00	\$0.00
Duplex Jacks (4 pair) Plenum Cable Dual Run - f	0	\$175.00	\$0.00
Duplex Jacks (4 pair) Plenum Cable Single Run	0	\$140.00	\$0.00
Duplex Jacks (4 pair) Shielded Cable Dual Run	0	\$160.00	\$0.00
Duplex Jacks (4 pair) Shielded Cable Single Ru	0	\$125.00	\$0.00
Duplex Jacks (4 pair) Voice/Data Cable Dual R	0	\$145.00	\$0.00
Duplex Jacks (4 pair) Voice/Data Cable Single f	0	\$115.00	\$0.00
Existing Station Programming (cable in place)	0	\$67.00	\$0.00
Expedite charges, same day delivery	0	\$200.00	\$0.00
Expedite charges, second day delivery	0	\$100.00	\$0.00
Keyprint Software Installation	0	\$130.00	\$0.00

3575

The Price and Extension (total) columns change as the quantity changes.

2. Click Process.

The Final Quote Worksheet displays.

Final Quote Worksheet

When you are finished with your quote, the Final Quote Worksheet displays. In this screen, you can enter additional charges:

- ◆ Other installation charges
- ◆ Database preparation
- ◆ Training
- ◆ First-year Warranty
- ◆ Maintenance agreement
- ◆ Other hardware and software
- ◆ Taxes (Parts/Labor)

Taxes, if selected, are not calculated for fees for database preparation, first-year warranty, or the maintenance agreement. Labor tax, if applicable, is calculated using installation charges. The first five items in the worksheet are calculated by the program and cannot be changed in this screen.

► To enter charges

1. Click Other Installation Charges and enter an amount

...and/or Database Preparation and enter an amount

...and/or Training and enter an amount

...and/or First Year Warranty and enter an amount

...and/or Maintenance Agreement and enter an amount

...and/or Other Hardware (Taxable) and enter an amount

...and/or Other Software (Taxable) and enter an amount

...and/or Parts Tax at Percentage Rate and enter the rate

...and/or Labor Tax at Percentage Rate and enter the rate

Final Quote WorkSheet 970521-1313		
Total Price of Configured Parts.....		\$25,151.00
Total Price of Spare Parts		\$180.00
Total Price of Optional Add On Parts ...		\$0.00
Parts Subtotal (Taxable)		\$25,331.00
Installation (See Installation page)		\$0.00
Other Installation Charges		\$200.00
Database Preparation		\$0.00
Training		\$1,000.00
First Year Warranty		\$0.00
Maintenance Agreement		\$0.00
Other Hardware (Taxable)		\$0.00
Other Software (Taxable)		\$0.00
Parts Tax at Percentage Rate	8.00	\$2,026.48
Labor Tax at Percentage Rate	0.00	\$0.00
Total Price of This Quote		\$28,557.48

2303

The correct taxable amount is calculated and displays in the right-hand column.

The correct taxable amount is calculated and displays in the right-hand column.

2. Click Save Quote
...or Print Quote.
3. Click Close.

The quote is saved.

Print/Save to File dialog box displays.

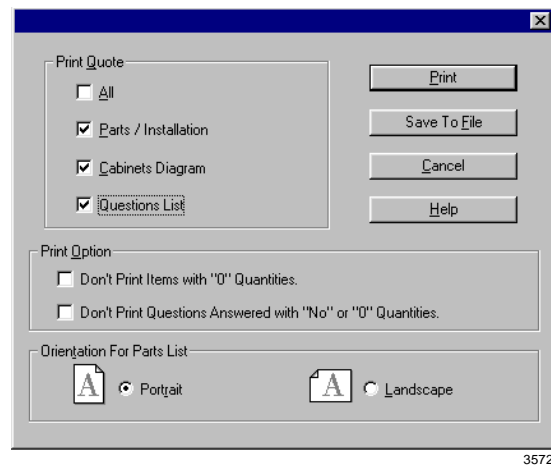
You are returned to DKQuote's opening window.

Saving/Printing a Quote

You can save and/or print your quote from the Final Quote Worksheet or the Report drop-down menu (see [“To print/save to file/delete a quote” on Page 41](#) for information on using print/save a quote from the Report drop-down menu).

- Click Save Quote
...or Print Quote.

The quote is saved and can be selected from the Existing Quote list.



You can print All, Parts/Installation, Cabinets Diagram, or the Questions List. You can also select:

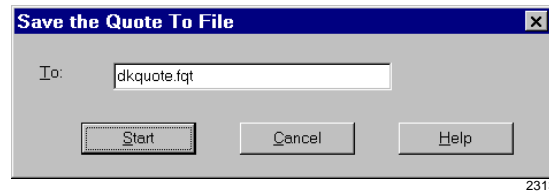
- ♦ Don't Print Items with "0" Quantities
- ♦ Don't Print Questions Answered with "No" or "0" Quantities
- ♦ Save To File
- ♦ Orientation For Parts List – Portrait or Landscape

After your quote is printed, you are returned to the Final Quote Worksheet.

Important! *Since DKQuote saves each quote in three files, you cannot use copy/paste commands to copy quotes from one directory to another. You must use the Transfer Out and Transfer In options from the Quote Menu.*

► **To save to file**

1. Click Save to File from the Print/Save Quote dialog box.
2. Enter a file/path name.
3. Click Start.
4. Click Close.



Note The program defaults to dkquote.fqt and places the file in the DKQuote directory.

The file, consisting of the final parts list and cover sheet, is saved to the destination file/path name. The file can be modified in Excel.

You are returned to DKQuote's opening window.

Configured Parts List

After all of the necessary information is entered and the configuration conflicts are corrected, the Configured Parts List displays. It lists all required parts in alphabetical order by part number along with quantities, prices, and total prices. As you select parts, a brief description appears at the bottom of the screen.

The Configured Parts List can only be viewed. If you need to make modifications to the parts and pricing, select Previous to return to the Equipment Selection screen.

Note Technical personnel (level 3) cannot see the price column in this screen.

PCB Placement Guide

The PCB Placement Guide is viewable from the Configured Parts screen by clicking View Diagram. At the top of the System Capacity Summary/PCB Placement Guide, DKQuote lists what ports, lines, and cabinet slots are configured and the maximum future growth allowed with your particular processor. The guide and capacity summary print when the quote is printed.

For example, in a Strata DK424 with 24 station ports, 48 lines, and 23 cabinet slots already configured, the maximum allowable future growth is 183 station ports, 96 lines, and 23 cabinet slots. DKQuote also notes that the station ports and lines are not to exceed 288 with the configured processor.

► To view the PCB placement guide

1. Click View Diagram from the Configured Parts List.

System Capacity Summary/PCB Placement Guide

1. 16 station ports configured. 16 station ports may be added with configured processor
 2. 0 Lines configured. 16 lines may be added with configured processor
 3. The total combination of lines and station ports can not exceed 48 with configured processor.
 4. 3 cabinet slots configured. 1 cabinet slots spare. 3 cabinet slots may be added with configured processor to add more stations, lines, or option PCBs

Cabinet 1(NR*)	R11	RCTU	S11	S12	S13	S14	S15	S16
PCB Type		RCTUA4	PDKU2	PDKU2	Spare	Spare	Spare	Spare
Port Nos.			000-007	008-015				
Line Nos.								
Option/Note								
Cabinet 2(NR*)	S21	S22	S23	S24	S25	S26	S27**	S28**
PCB Type								
Port Nos.								
Line Nos.								
Option/Note								
Cabinet 3(NR*)	S31	S32	S33	S34	S35	S36	S37**	S38**
PCB Type								
Port Nos.								
Line Nos.								

* Type=DK280, DK424 or NR (Not Required).
 ** You must Check Cabinet Power Factors using Worksheet 5 in Configuration section of DK424 I/M Manual.
 *** Cabinets 2 - 7. Last two slots are available on the DK424 using RCTUE/F processors, with MBJU removed.
 Table 3 - See Next Page.

Next Page
Close

3115

Note Table 3 (which is not shown, but is referenced at the bottom of this screen) displays the placement and function of interface PCBs (for example, RSIU and PIOU).

2. Click Close.

The Configured Parts List screen displays again.

Pricing Menu

Pricing and description options are available from the Main Menu by clicking Pricing. The drop-down menu (shown at right) displays all of the available options. The Price List is available to Level 1 (Administrators) and 2 (Sales). All other options on the Pricing Menu are available only to the Administrator and are described in “Customizing DKQuote” on Page 47.

DKQuote

Quote Pricing Report Update Setup View Help

Price List...

Price Category Setup...

Parts/Price Setup...

Required Add On Parts Setup...

Optional Add On Parts Setup...

Obsolete Parts Setup...

Nat'l Accts Installation Setup...

Dealer Installation Setup...

Question File Setup...

3116

Price List

The Price List displays:

- ◆ All parts (the entire parts list)
- ◆ Cabinets/power supplies
- ◆ Digital and electronic telephone equipment
- ◆ Telephone options
- ◆ Attendant Console equipment
- ◆ KSU and plug-ins
- ◆ PCB and Piggyback components
- ◆ Floor-mounted, miscellaneous, and battery backup equipment

As you highlight the part that you want to view, the price displays at the bottom of the screen.

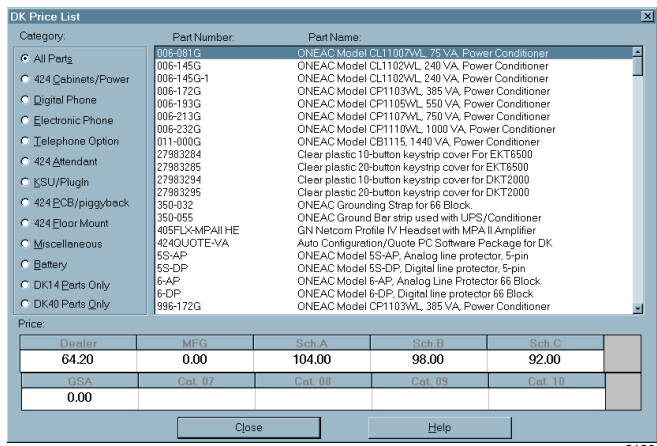
► To view the price list



1. Click Price List from the Toolbar

...or click Pricing from the Main Menu and Price List.

2. Click the Category that you want to view.
3. Click the Part Number.
4. Click Close.



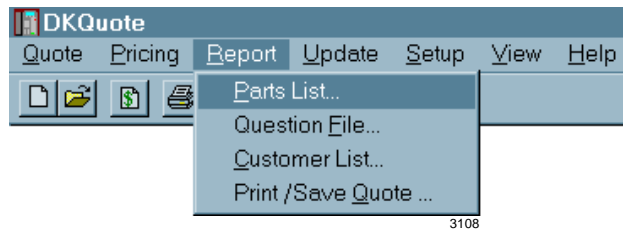
The available parts display for that category.

The price for the highlighted part appears at the bottom of the screen in the pre-programmed price schedule. For more information, see the Administrator.

Report Menu

The Report drop-down menu (shown at right) enables you to print and save:

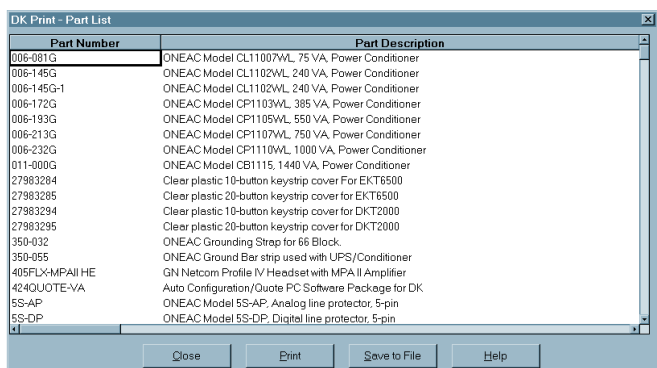
- ◆ Customized quotes
- ◆ Parts list
- ◆ Question file
- ◆ Customer list



If you select Save to File from the Print/Save Quote option, a pop-up dialog box displays. You can save the file to a floppy-disk drive, hard disk drive, or network drive.

► To print the parts list or save to file

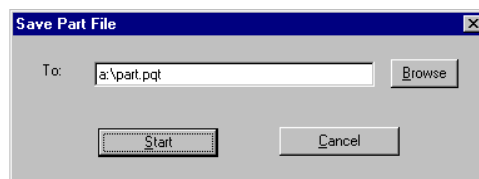
1. Click Report from the Main Menu and Parts List.



3127

2. Click Print
...or Save to File.

Your file is sent to the printer.



3561

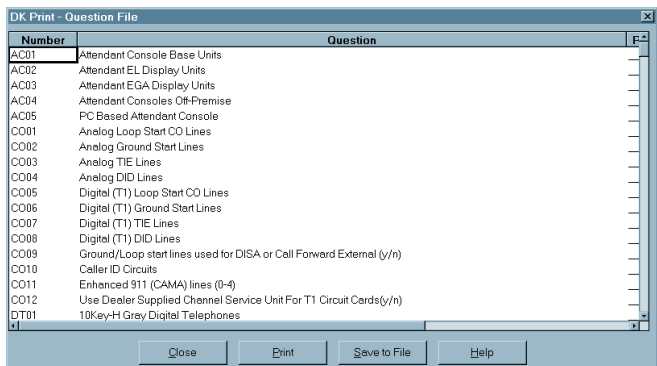
Enter the file destination. The default file extension is .pqt.

3. Click Close.

You are returned to the DKQuote opening window.

► To print the question file or save to file

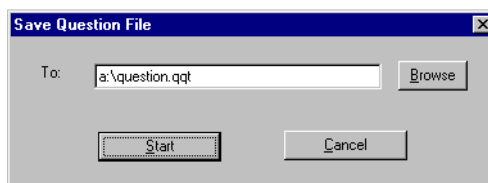
1. Click Report from the Main Menu and Question File.



3128

2. Click Print
...or Save to File.

Your file is printed.



3559

3. Enter the file destination.

The default file extension is .qqt.

- Click Start
...or Cancel.

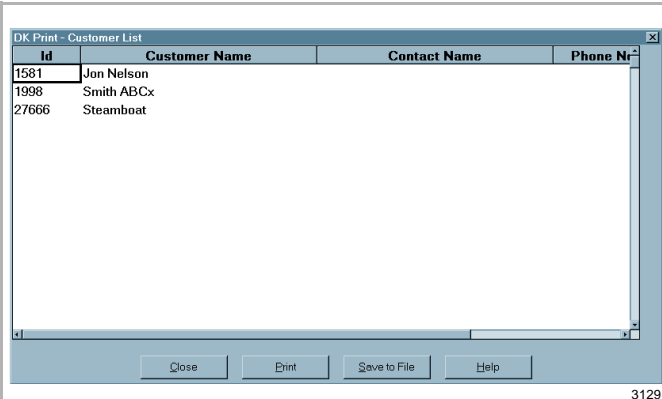
Your file is saved.
The save process is canceled.

Notes

- The Question File input fields display in the Equipment Selection screens. Because DKQuote continually provides you with the most current system components available, the input fields and selection choices change with different versions of the software.
- It is recommended that you make a printout of the Question file for review and to become familiar with the inputs and selection choices that you will be asked when you are configuring a system and generating a quote.

► To print/save to file a customer list

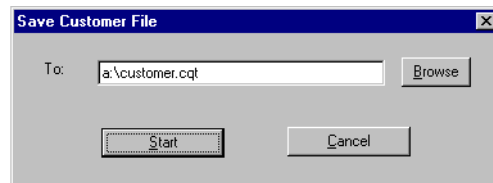
- Click Report from the Main Menu and Customer List.



3129

- Click Print
...or Save to File.

Your file is printed.



3562

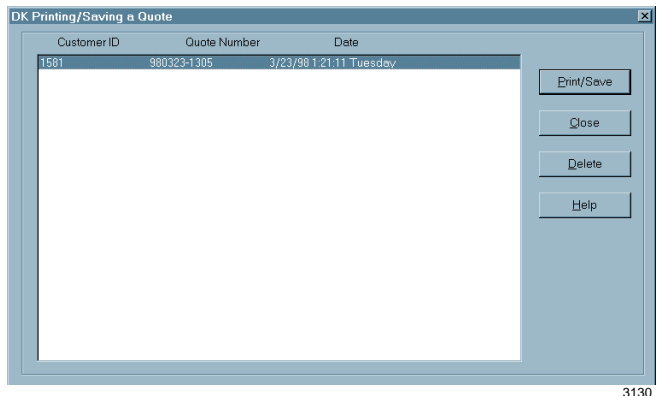
Enter the file destination. The default file extension is .cqt.

► To print/save to file/delete a quote



- Click Print/Save Quote from the Toolbar

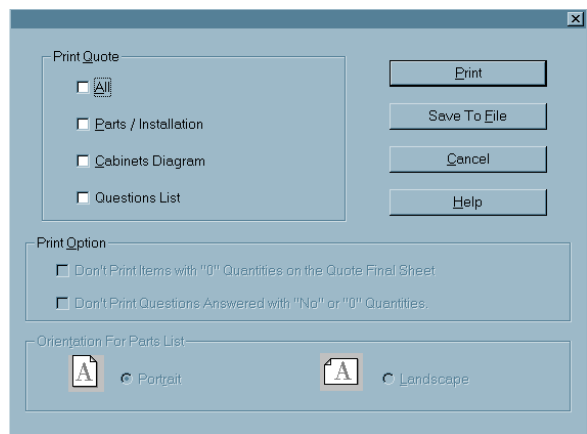
...or Report from the Main Menu and Print/Save Quote.



3130

2. Highlight an existing quote.
 3. Click Delete
- ...or print/save.

A pop-up box asks you to confirm the deletion. If you click Yes, the quote is deleted.



3117

4. Click All

These items are printed:

- ◆ Final Quote Worksheet
- ◆ Quote Total Parts List
- ◆ Installation Items
- ◆ PCB Placement Guide

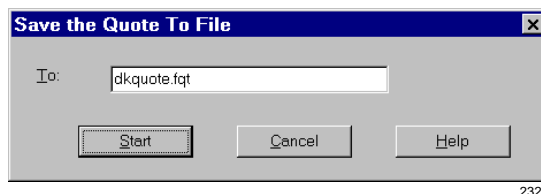
...or Parts/Installation
 ...or Cabinets Diagram
 ...or Questions List

All selected parts and installation charges print.

The system capacity screen prints.

...or Save to File.

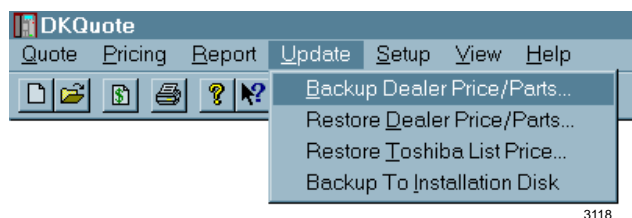
5. Enter a file/path name.



The program defaults to dkquote.fqt and saves to the DKQuote directory unless you change the name and path. The file can be modified in Excel.

Update Menu

The Update Menu (shown at right) enables you to backup and restore Dealer Price/Parts and Toshiba List Prices.



Note Backup to Installation Disk is only available to Level 1 (Administrator) and is described in [“Customizing DKQuote” on Page 47](#).

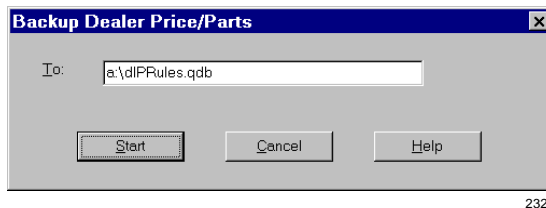
Backup Dealer Price/Parts saves the current Dealer Price setup to a floppy disk, hard disk drive, or network drive. All custom parts, prices, markups, discounts and company general information is saved.

Restore Dealer Price/Parts enables you to obtain the dealer prices and parts that were saved on a floppy diskette or another directory on the hard drive/network. If the restored file is not compatible with the current DKQuote database, an error message displays and the file is not restored.

The Restore Toshiba List Prices menu option restores the current or a new Toshiba price from a file on a floppy disk, or directory on the hard disk drive, or network drive. It does not affect Dealer Discounts or Markup. You can update all Toshiba list prices, Authorized Dealer prices, National Accounts and GSA.

► To back up dealer price/parts

1. Click Update from the Main Menu and Backup Dealer Price/Parts.
2. Enter the drive, directory and file name.
3. Click Start.

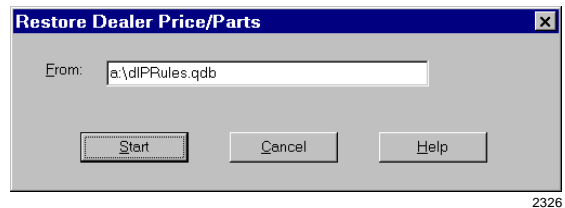


The suggested backup file extension is .qdb.

The file is saved and the screen closes.

► To restore dealer price/parts

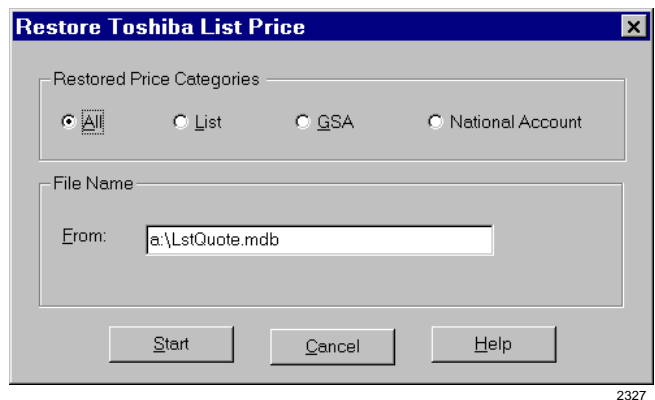
1. Click Update from the Main Menu and Restore Dealer Price/Parts from the drop-down menu.
2. Enter the drive, directory and file name.
3. Click Start.



The file is restored and the screen closes.

► To restore Toshiba list prices

1. Click Update from the Main Menu and Restore Toshiba List Prices from the drop-down menu.
2. Enter the drive, directory and file name.
3. Click Start.



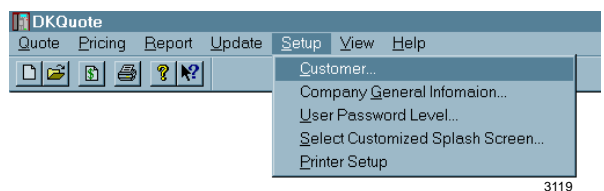
The suggested list price database file extension is mdb.

The file is restored and the screen closes.

Setup Menu

The Setup menu (shown at right) enables you to setup:

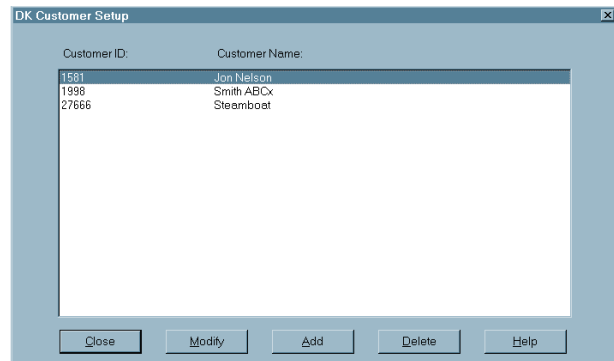
- ◆ Customers
- ◆ Company general information
- ◆ User password levels
- ◆ Customized splash screen



The Customer record includes the customer name, address, phone number, contact name, and shipping name/address. The Company General Information screen includes the company name, phone and fax number, and system name. This information is used in the quote cover sheet.

► **To add, modify or delete a customer record**

1. Click Setup from the Main Menu and Customer from the drop-down menu.



3131

1. Highlight the customer.
2. Click Add and enter the information
...or Delete
...or Modify.
3. Enter the changed information and click OK.
4. Click Close.

The Customer record screen displays.

A pop-up screen asks you to confirm the deletion.

The Customer record screen displays.

The modified information is retained and you are returned to the previous screen.

The changes are saved.

► **To enter/modify company general information**

1. Click Setup from the Main Menu and Company General Information from the drop-down menu.

Company Name: ABC
Address 1: 12345 Anywhere Street
Address 2:
City: Our Town
State: CA Zip: 99999
Telephone: 714-780-1112
Fax Number: 714-780-4444
System Name: DK

3132

2. Enter or change the company name, address, telephone, and fax number.
3. Click OK.

This chapter describes the DKQuote features available to Level 1 password users only (usually assigned only to the System Administrator). Features available to Level 2 and 3 users are described in Chapters 1~3 of this guide. The features described in this chapter are:

- ◆ Pricing Menu
 - ◆ Price Category Setup
 - ◆ Parts/price Setup
 - ◆ Required Add-on Parts Setup
 - ◆ Optional Add-on Parts Setup
 - ◆ Obsolete Parts Setup
 - ◆ National Accounts Installation Setup
 - ◆ Dealer Installation Setup
 - ◆ Question File Setup
- ◆ Update Menu
 - ◆ Backup to Installation Disk
- ◆ Setup Menu
 - ◆ User Password Level
 - ◆ Customized Splash Screen

Pricing Menu

As the System Administrator, you control and customize almost all of the quote options and pricing. You can add new parts, hide existing parts (so they do not display in your quotes), create multiple pricing schedules, and change part names.

Category Pricing

The following categories are Toshiba default price schedules:

- ◆ Regular Account Dealer Column – Authorized Toshiba Dealer Price (Dealer Cost X Dealer Markup)
- ◆ National Account, MFG – Manufacturer’s suggested retail price
- ◆ National Account, Schedule A/B or C – Toshiba National Accounts Price
- ◆ General Service Administration (GSA) – Authorized Communications Schedule Price List

Note The number of price schedules available (from 1 to 10) depends on how you customize the schedule structure. There are four standard schedules (shown above) and up to four categories that you can use to customize your Dealership.

Price Definitions

The following definitions apply to all price schedules:

- ◆ List Price – authorized Toshiba Dealer Price List.
- ◆ Dealer Cost – Initially the Dealer Cost is List Price. After Dealer Discount is added, it becomes List Price X (1-Dealer Discount).
- ◆ Dealer Price – Dealer Cost X (1+ Dealer Markup).
- ◆ Dealer Markup – Defaults to 0. Markups should only be set after establishing (setting) the Dealer Discount.
- ◆ National Account, Schedules A~C – Toshiba National Accounts Price (non-variable pricing).
- ◆ MFG Price – Manufacturer’s suggested retail price (non-variable pricing).
- ◆ General Service Administration – Authorized Communications Schedule Price List (GSA) (non-variable).
- ◆ Cat07~Cat10 – Dealer customized prices – Base X (1+ Cat07~Cat10 Markup). Initially these categories contain Dealer Cost (Profit Margin, Cat. Price – Dealer Cost/Cat. Price).

The base of a category price can be changed from Dealer Cost to Toshiba MFG, Schedule A~C, GSA or any lower category. Any markup can be set for each category.



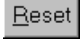
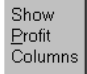
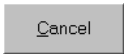
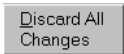

Parts/Price Setup Screens

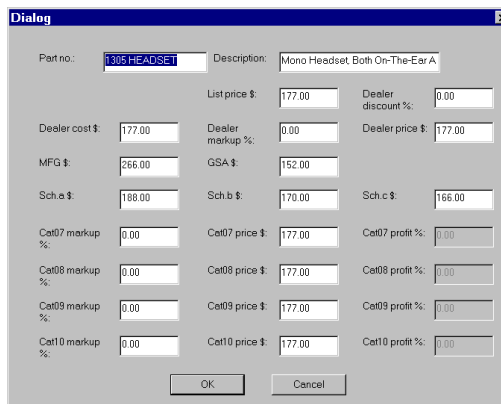
Many of the price screens (shown below) have special function buttons/columns. You can hide information by using the Hide Column, sort columns, and use the special function buttons at the bottom of the screen. There is also a Special Pricing Section in which you can customize your pricing structure.

The screenshot shows the 'DK Parts/Price Setup' window. At the top, there is a 'Hide Column' button. Below it is a table with the following columns: Part No., Description, Hide, List Price \$, Dealer Discount, Dealer Cost \$, Dealer Markup, Dealer Price \$, and Cat07 Markup. The table contains 15 rows of data, including parts like 'ONEAC Model' and 'Clear plastic 1t'. Below the table is a 'Special Pricing' section with dropdown menus for 'Cat07', 'Cat08', 'Cat09', and 'Cat10'. There are also buttons for 'Base', 'Markup %', 'Apply', and 'Show Profit Columns'. At the bottom of the window are buttons for 'Save All Changes', 'Cancel', 'Discard All Changes', 'Edit Item', and 'Help'.

3133

The buttons at the bottom of the Setup screen perform the following:

CLICK	To
	Save all changes.
	Apply all changes and make calculations in the Special Pricing Section of the screen. All of the modifications remain in memory.
	Reset all current changes in the Special Pricing Section of the screen.
	Display Cat07~Cat10 profit margins.
	Cancel any changes and close.
	Discard all changes.
	Edit all data fields in a pop-up dialog box (shown below).



2272

Column Sorting

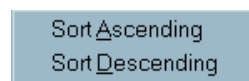
You can sort a column in an ascending or descending order depending upon the type of column it is. If it is a price column, the prices are sorted in ascending order. If it is an alphanumeric column (for example, Part Number or Description), it is sorted in numeric/alphabetic order.

1. Click at the top of the column that you want to sort (shown below)

Hide	List Price \$	Dealer Discount	Dealer Cost \$
	177.00	0.00	177.00
	2.00	0.00	2.00
	2.00	0.00	2.00
	10.00	0.00	10.00
	10.00	0.00	10.00

...or right click on the column.

A “>” symbol or “<” symbol in the column indicates it has been sorted in an ascending or descending order.



3147

2. Click Sort Ascending
...or Sort Descending.
3. Click again on the same column.

4. Click Discard All Changes to return the column to its default.

The column sorts.

The column sorts in the opposite direction

Description	Hide	List Price	Dealer Discount	Dealer Cost \$	Dealer Markup	Dealer Price \$
2017 DK 8 F	<input type="checkbox"/>	5335.00	0.00	5335.00	0.00	5335.00
2017 DK 424 L	<input type="checkbox"/>	4900.00	0.00	4900.00	0.00	4900.00
2017 DK 6 F	<input type="checkbox"/>	4335.00	0.00	4335.00	0.00	4335.00
2017 DK 4 F	<input type="checkbox"/>	3235.00	0.00	3235.00	0.00	3235.00
D, SMIS	<input type="checkbox"/>	3000.00	0.00	3000.00	0.00	3000.00

2316

Important! Do not Click Discard All Changes if you have made other changes to the screen and have not saved them. The changes are lost.

Special Pricing Section

Special Pricing customizes the price lists (Cat07~Cat10) for your Dealership.

1. Click the category field (Cat07~Cat10) to be customized.

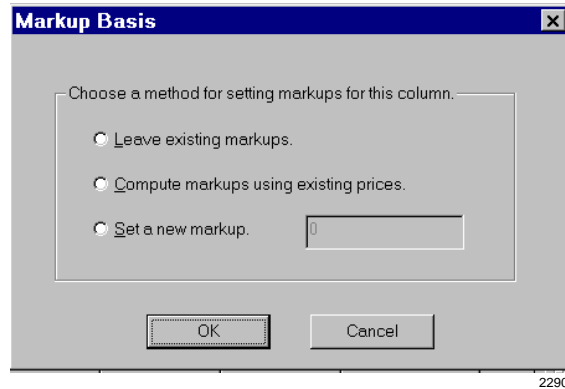
2. Click a calculation base (other than Dealer) from the drop-down menu.

3. Click Leave existing markups
...or Compute markups using existing prices
...or Set a new markup and enter a markup price.

4. Click OK.



Note The default calculation base is the Dealer cost.



The word Existing is placed in the Markup column.

The word Compute is placed in the Markup column.

The price is placed in the Markup column.

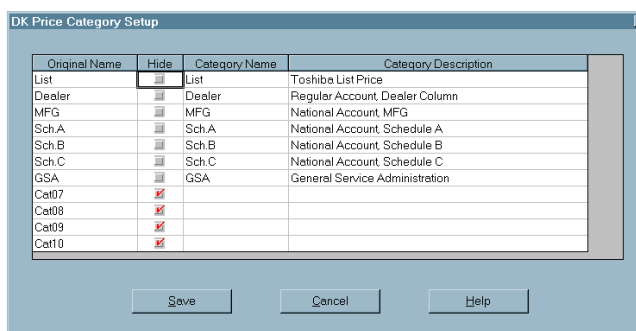
You are returned to the prior screen.

- | | |
|---|--|
| <ol style="list-style-type: none"> 5. Click Reset
...or Apply. 6. Click Show Profit Column. 7. Click Save
...or Discard All Changes. | <p>All of your markups are erased.</p> <p>All of your markups are included in the appropriate screen columns (Cat07~10 Markup).</p> <p>Additional columns labeled Cat07 Profit, etc., appear next to each of the four columns (Cat07~Cat10).</p> <p>The changes are saved and screen closes.</p> <p>The changes are discarded and the price screen is still displayed. To close the screen, select Cancel.</p> |
|---|--|

Hiding Price Categories

A check mark (✓) in the Hide column indicates that the price categories are not available to users when preparing quotes. They can be selected as required for custom pricing purposes.

1. Click Pricing from the Main Menu and Price Category Setup from the drop-down menu.



3134

2. Click in the Hide column next to the names that you want hidden.
3. Click Save
...or Cancel.

A check mark (✓) displays next to the name in the Hide column.

The changes are saved and the names are hidden from the price lists.

All changes are canceled, and you are returned to the prior screen.

Creating/Changing Names and Descriptions

The Price Category Setup screen enables you to create names and descriptions for up to 10 price schedules. The 10 price categories display by default.

1. Highlight the name or description
...or enter a new name or description.
2. Click Save
...or Cancel.

The name can have up to 9 alphanumeric characters and the Category Description can have up to 34 alphanumeric characters.

The entries are saved and the screen closes.

All changes are canceled, and you are returned to the prior screen.

Parts/Price Setup

In Parts/Price Setup, you can change a part number, description, and the associated prices. The parts include all parts on the current published Authorized Toshiba Dealer Price List.

The prices which can be changed are: Dealer List price, Dealer Discount rate, Dealer Cost, Dealer Markup, Dealer price, National Accounts MFG and Schedule A-C, GSA and four Dealer custom category markups, prices and Dealer profits.

A check mark (✓) in the Hide column indicates that the part is not available to users when preparing quotes. Items can be hidden when customizing prices.

► To change the parts/price setup

1. Click Pricing from the Main Menu and Parts/Price Setup from the drop-down menu.

Part No. >	Description	Hide	List Price \$	Dealer Discount	Dealer Cost \$	Dealer Markup	Dealer Price \$	Cat07 Markup
1	006-081G	ONEAC Model	64.20	0.00	64.20	0.00	64.20	0.00
2	006-145G	ONEAC Model	138.60	0.00	138.60	0.00	138.60	0.00
3	006-145G-1	ONEAC Model	138.60	0.00	138.60	0.00	138.60	0.00
4	006-172G	ONEAC Model	189.60	0.00	189.60	0.00	189.60	0.00
5	006-193G	ONEAC Model	237.60	0.00	237.60	0.00	237.60	0.00
6	006-213G	ONEAC Model	315.00	0.00	315.00	0.00	315.00	0.00
7	006-232G	ONEAC Model	396.00	0.00	396.00	0.00	396.00	0.00
8	011-000G	ONEAC Model	519.00	0.00	519.00	0.00	519.00	0.00
9	27983284	Clear plastic 1(10.00	0.00	10.00	0.00	10.00	0.00
10	27983285	Clear plastic 2(10.00	0.00	10.00	0.00	10.00	0.00
11	27983294	Clear plastic 1(10.00	0.00	10.00	0.00	10.00	0.00
12	27983295	Clear plastic 2(10.00	0.00	10.00	0.00	10.00	0.00
13	350-032	ONEAC Groun	0.00	0.00	0.00	0.00	0.00	0.00
14	350-055	ONEAC Groun	0.00	0.00	0.00	0.00	0.00	0.00
15	405E1 X-MPA111 EGN Netcom P		190.00	0.00	190.00	0.00	190.00	0.00

Special Pricing

Base	Cat07 Dealer	Cat08 Dealer	Cat09 Dealer	Cat10 Dealer	Apply	Show Profit Columns
Markup %					Apply	

Save All Changes Cancel Discard All Changes Edit Item Help

2. Change the Part Number, if needed.

Since each part is identified by a marker in the Quote software, a changed part number is still configured like the original part.

For example, if you change Part Number PDKU2 to Digital PCB, DKQuote lists Digital PCB instead of PDKU2 on the final Quote sheet, but configures PDKU2 PCBs in the DK424 cabinets.

Note The part number is not normally changed. However, when it is changed, it is changed in all related areas of DKQuote, including all price schedules.

3. Change the Description, if needed.

Valid entries: up to 22 alphanumeric characters.

Note When a part description is changed, it is changed in all related areas of the program, including the price schedules.

4. Hide an item, if desired.

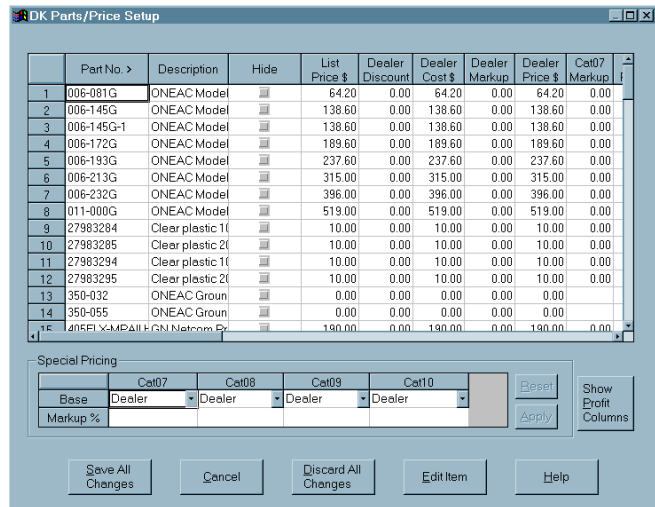
The hidden item is not displayed in the General Price List, Price List, Parts List, or Existing Parts. They are shown in cabinet drawings and configured parts lists, if they are needed for a particular configuration.

- | | |
|--|---|
| 5. Change the List Price (\$), if needed. | The list price is not normally changed. If it is, the change is reflected in the Dealer Cost and Dealer Price columns.

The price is taken from the Authorized Toshiba Dealer Price List. |
| 6. Change the Dealer Discount (%), if needed. | The change is reflected in the Dealer Cost and Dealer Price columns. |
| 7. Change the Dealer Cost (\$), if needed. | The change is reflected in the Dealer Discount and Dealer Price columns. |
| 8. Change the Dealer Markup (%), if needed. | The change is reflected in the Dealer Price column. |
| 9. Change the Dealer Price (\$), if needed. | The change is reflected in the Dealer Markup column. |
| 10. Change Cat07~Cat10 Markup (%), if needed. | The change is reflected in the corresponding Cat07~Cat10 Price and Profit columns. |
| 11. Change Cat07~Cat10 Price (\$), if needed. | The change is reflected in the corresponding Cat07~Cat10 Markup and Profit columns. |
| 12. Change Cat07~Cat10 Profit (%), if needed. | The change is reflected in the corresponding Cat07~Cat10 Price and Markup columns. |
| 13. Change MFG, if needed. | These prices are not normally changed. Any changes are reflected on the Parts and Price Lists. |
| 14. Change National Account, Sch.A~C, if needed. | These prices are not normally changed. Any changes are reflected on the Parts and Price Lists. |
| 15. Change GSA, if needed. | These prices are not normally changed. Any changes are reflected on the Parts and Price Lists. |
| 16. Click Save all Changes. | The changes are saved and the screen closes. |

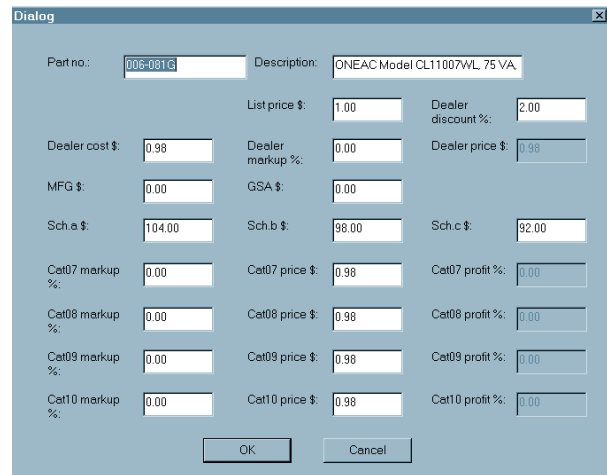
► To edit an individual item

1. Click Pricing from the Main Menu and Parts/Price Setup from the drop-down menu.



3133

2. Highlight a part that you want to change and click Edit Item.



3149

Since each part is identified by a marker in the Quote software, a changed part number is still configured like the original part.

For example, if you change Part Number PDKU2 to Digital PCB, DKQuote lists Digital PCB instead of PDKU2 on the final Quote sheet, but configures PDKU2 PCBs in the DK424 cabinets.

Note The part number is not normally changed. However, when it is changed, it is changed in all related areas of DKQuote, including all price schedules.

3. Change the Description, if needed.
4. Click OK.

Valid entries: up to 22 alphanumeric characters.

Note When a part description is changed, it is changed in all related areas of the program, including the price schedules.

You are returned to the previous screen.

Required Add-on Parts Setup

The Required Add-on Parts Setup option enables you to change a part number, description, and the associated prices. When they are required, the add-on parts are configured automatically by DKQuote during the quote generation.

Required add-on parts include items, such as secondary protectors for DID lines or off-premise extensions which are easy to forget when doing a quote manually. These parts are not supplied by Toshiba, but are supplied by individual Dealer vendors.

The prices that can be changed are Dealer List Price, Dealer Discount, Dealer Cost, Dealer Markup, Dealer Price, National Accounts MFG and Schedule A-C, GSA and four Dealer custom category markups, prices, and Dealer profits.

Note Unlike other pricing screens, the items on the Required Add-on Parts screen cannot be hidden.

► To change the required add-on parts setup

1. Click Pricing from the Main Menu and Required Add on Parts Setup from the drop-down menu.

Part No.	Description	List Price \$	Dealer Discount	Dealer Cost \$	Dealer Markup	Dealer Price \$	Cat07 Markup	Cat07 Price \$	Cat08 Markup
1	AA ANNOUNC Auto Attendant	0.00	0.00	0.00	0.00	0.00	0.00	0.00	0.00
2	ACD ANNOUN ACD digital ani	0.00	0.00	0.00	0.00	0.00	0.00	0.00	0.00
3	CALLER ID INT Caller ID Interf	0.00	0.00	0.00	0.00	0.00	0.00	0.00	0.00
4	CCV-PC LINE C Line driver for C	0.00	0.00	0.00	0.00	0.00	0.00	0.00	0.00
5	CSU Channel Serv	0.00	0.00	0.00	0.00	0.00	0.00	0.00	0.00
6	HMS-PC LINE Line driver for H	0.00	0.00	0.00	0.00	0.00	0.00	0.00	0.00
7	H0006500 Existing Stator	0.00	0.00	0.00	0.00	0.00	0.00	0.00	0.00
8	NT1 Network Termi	0.00	0.00	0.00	0.00	0.00	0.00	0.00	0.00
9	STANDARD T1 Standard tone-	0.00	0.00	0.00	0.00	0.00	0.00	0.00	0.00
10	X-CO LINE Two-CO Line C	0.00	0.00	0.00	0.00	0.00	0.00	0.00	0.00
11	X-PROTECTOF Analog Hi-V. 2r	0.00	0.00	0.00	0.00	0.00	0.00	0.00	0.00
12	X-PROTECTOF Digital Lo-V. 2r	0.00	0.00	0.00	0.00	0.00	0.00	0.00	0.00

Special Pricing

Base	Cat07	Cat08	Cat09	Cat10	Reset	Show Profit Columns
Dealer	Dealer	Dealer	Dealer	Dealer	Apply	

Save All Changes Cancel Discard All Changes Edit Item Help

3135

2. Change the Part Number, if needed.
3. Change the Description, if needed.

Note The part number is not normally changed. However, when it is changed, it is changed in all related areas of DKQuote, including all price schedules.

Valid entries are up to 22 alphanumeric characters.

Note When a part description is changed, it is changed in all related areas of the program, including the price schedules.

4. Change the List Price (\$), if needed.	The list price can be set to any amount. If it is, the change is reflected in the Dealer Cost and Dealer Price columns.
5. Change the Dealer Discount (%), if needed.	The change is reflected in the Dealer Cost and Dealer Price columns.
6. Change the Dealer Cost (\$, if needed.)	The change is reflected in the Dealer Discount and Dealer Price columns.
7. Change the Dealer Markup (%), if needed.	The change is reflected in the Dealer Price column.
8. Change the Dealer Price (\$), if needed.	The change is reflected in the Dealer Markup column.
9. Change Cat07~Cat10 Markup (%), if needed.	The change is reflected in the corresponding Cat07~Cat10 Price and Profit columns.
10. Change Cat07~Cat10 Price (\$), if needed.	The change is reflected in the corresponding Cat07~Cat10 Markup and Profit columns.
11. Change Cat07~Cat10 Profit (%), if needed.	The change is reflected in the corresponding Cat07~Cat10 Price and Markup columns.
12. Change MFG, if needed.	Default prices are 0.00. Prices should be entered for any part not hidden. Changes are reflected on the Parts and Price Lists.
13. Change National Account, Sch.A~C, if needed.	Default prices are 0.00. Prices should be entered for any part not hidden. Changes are reflected on the Parts and Price Lists.
14. Change GSA, if needed.	Default prices are 0.00. Prices should be entered for any part not hidden. Changes are reflected on the Parts and Price Lists.
15. Click Save all Changes.	The changes are saved and the screen closes.

Optional Add-on Parts Setup

The Optional Add-on Parts Setup enables you to add, delete, or change a part number, description, and the associated prices for optional add on parts. A check mark (✓) in the Hide column indicates that the part is not available to users when preparing quotes.

The parts, such as batteries and page amplifiers, not supplied by Toshiba and are not automatically configured. They can be added to the quote by selecting the Additional Parts option in the Quote Setup screen.

You can change Dealer List Price, Dealer Discount, Dealer Cost, Dealer Markup, Dealer Price, National Accounts MFG and Schedule A-C, GSA and four Dealer custom category markups, prices and Dealer profits.

► To change the optional add-on parts setup

1. Click Pricing from the Main Menu and Optional Add-on Parts Setup from the drop-down menu.

Part No.	Description	Hide	List Price \$	Dealer Discount	Dealer Cost \$	Dealer Markup	Dealer Price \$	Cat07 Markup
1	BATTERY 12 V/80 Amp/h		0.00	0.00	0.00	0.00	0.00	0.00
2	MUSIC SOURC Music Source f		0.00	0.00	0.00	0.00	0.00	0.00
3	MUSIC SOURC Music source fi		0.00	0.00	0.00	0.00	0.00	0.00
4	MUSIC SOURC Music Source f		0.00	0.00	0.00	0.00	0.00	0.00
5	MUSIC SOURC Music source fi		0.00	0.00	0.00	0.00	0.00	0.00
6	PAGE AMPLIFI Page Amplifier		0.00	0.00	0.00	0.00	0.00	0.00
7	PAGE SPEAKE Page Speaker		0.00	0.00	0.00	0.00	0.00	0.00
8	PC-ATTENDAI Personal Com		0.00	0.00	0.00	0.00	0.00	0.00
9	PC-DKADMIN Personal Com		0.00	0.00	0.00	0.00	0.00	0.00
10	PC-OA Personal Com		0.00	0.00	0.00	0.00	0.00	0.00
11	PC-SMIS Personal Com		0.00	0.00	0.00	0.00	0.00	0.00

3136

2. Change the Part Number.
3. Change the Description.
4. Change the Hide Item, if desired.
5. Change the List Price (\$), if needed.
6. Change the Dealer Discount (%), if needed.
7. Change the Dealer Cost (\$), if needed.
8. Change the Dealer Markup (%), if needed.
9. Change the Dealer Price (\$), if needed.
10. Change the Cat07~Cat10 Markup (%), if needed.
11. Change the Cat07~Cat10 Price (\$), if needed.

Note All prices in this screen are initially set to 0.00.

When a part number is changed, it is changed in all related areas of DKQuote, including all price schedules.

Valid entries: up to 22 alphanumeric characters.

When a part description is changed, it is changed in all related areas of the program, including the price schedules.

Item is not displayed on the Price List, Spare Parts List and Existing Parts screen in the quote.

The list price can be set to any amount. If it is, the change is reflected in the Dealer Cost and Dealer Price columns.

The change is reflected in the Dealer Cost and Dealer Price columns.

The change is reflected in the Dealer Discount and Dealer Price columns.

The change is reflected in the Dealer Price column.

The change is reflected in the Dealer Markup column.

The change is reflected in the corresponding Cat07~Cat10 Price and Profit columns.

The change is reflected in the corresponding Cat07~Cat10 Markup and Profit columns.

12. Change the Cat07~Cat10 Profit (%), if needed.
13. Change MFG, if needed.
14. Change National Account, Sch.A~C, if needed.
15. Change GSA, if needed.

The change is reflected in the corresponding Cat07~Cat10 Price and Markup columns.

Default prices are 0.00. Any changes are reflected on the Parts and Price Lists.

Default prices are 0.00. Any changes are reflected on the Parts and Price Lists.

Default prices are 0.00. Any changes are reflected on the Parts and Price Lists.

➤ **To add an optional add-on part**

1. Click Add from the Optional Add-on Parts screen.

The screenshot shows a 'Dialog' box with the following fields:

- Part no.:
- Description:
- List price \$:
- Dealer discount %:
- Dealer cost \$:
- Dealer markup %:
- Dealer price \$:
- MFG \$:
- GSA \$:
- Sch.a \$:
- Sch.b \$:
- Sch.c \$:
- Cat07 markup %:
- Cat07 price \$:
- Cat07 profit %:
- Cat08 markup %:
- Cat08 price \$:
- Cat08 profit %:
- Cat09 markup %:
- Cat09 price \$:
- Cat09 profit %:
- Cat10 markup %:
- Cat10 price \$:
- Cat10 profit %:

Buttons: OK, Cancel

2246

2. Enter the applicable information.
3. Click OK.

Note The required fields are Part No., Description, List Price, MFG price, and Sch A~C prices.

➤ **To delete an optional add-on part**

1. Highlight the part and click Delete.
2. Click Save all Changes.

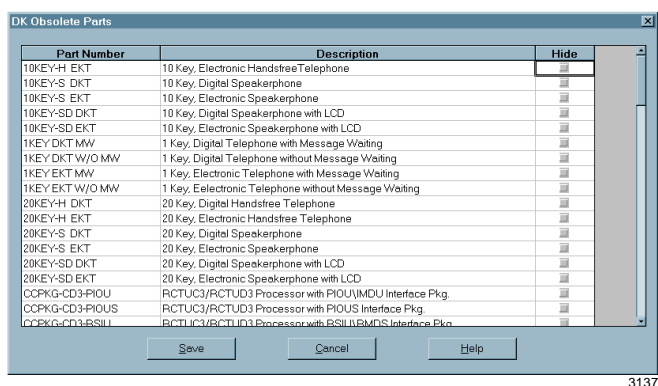
A pop-up dialog box displays asking you to confirm the deletion.

The changes are saved and the screen closes.

Hiding Obsolete Parts

An obsolete part is an older part that has been replaced by other parts and is no longer available from Toshiba. Obsolete Parts Setup enables you to include or hide listings for these parts. If the item is not hidden, it can be selected for use in a configuration from the Existing Parts screen.

1. Click Pricing from the Main Menu and Obsolete Parts Setup from the drop-down menu.



2. Click in the Hide column, opposite any obsolete part.
3. Click Save.

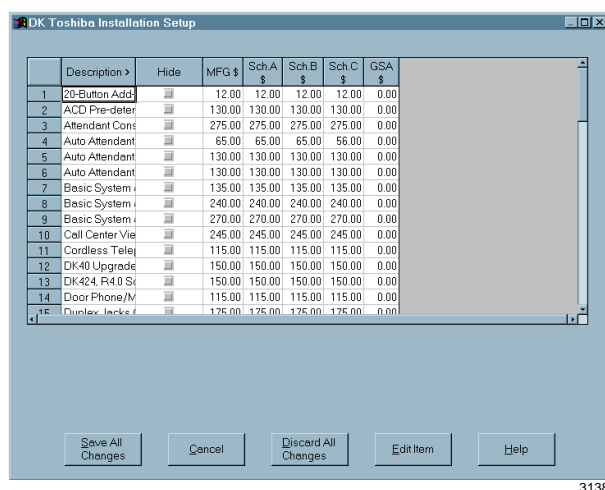
Item is not displayed on the Existing Parts screen in the quote.

The changes are saved and the screen closes.

Changing National Accounts Description and Price

National Accounts Installation Setup enables you to change the National Account Installation item description and/or price. You can also hide the item from view during the quote process. If the item is not hidden, it appears on the quote Installation Charges screen when a National Accounts or GSA price schedule is selected for use with the quote.

1. Click Pricing from the Main Menu and National Accounts Installation Setup from the drop-down menu.



2. Click in the Hide column, opposite any part.
3. Change any prices you want.
4. Click Save all Changes.

The item is not displayed on the Installation Charges screen when generating a quote.

The changes are saved and the screen closes.

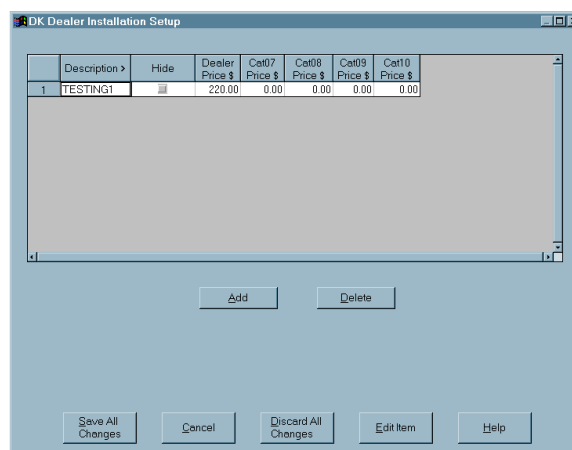
Dealer Installation Setup

The Dealer Installation Setup screen enables you to add, modify, or delete Dealer Installation items. You can also hide an item from view during the quote process. If no installation items are added to this screen, the Installation Selection screen does not display during the quote process.

When the Regular Account, Dealer Column account category or one of the Dealer special price schedules (Cat07~Cat10) are selected for use with the quote, added items are displayed on the quote Installation Charges screen.

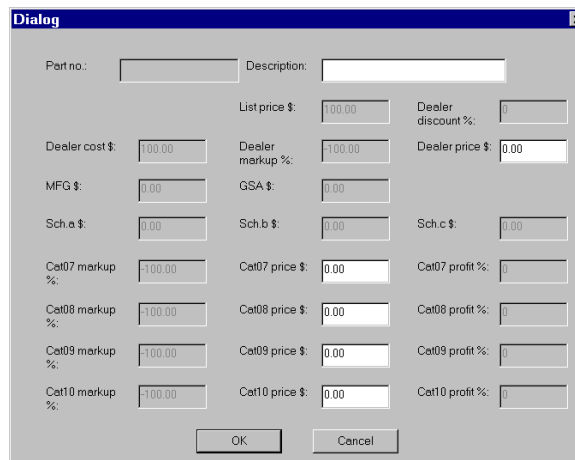
➤ To change the dealer installation setup

1. Click Pricing from the Main Menu and Dealer Installation Setup from the drop-down menu.



3139

2. Click Add.



2247

3. Enter the part description and Dealer Cat07~Cat10 price in the pop-up dialog box.
4. Click OK.

...or highlight the item and click Delete

The information displays on the Dealer Installation Setup screen.

You are asked to confirm the deletion, and the item is deleted from the list.

...or click in the Hide column, opposite any item.

- Click Save all Changes.

Item is not displayed on the Installation Charges screen during the quote process.

The changes are saved and the screen closes.

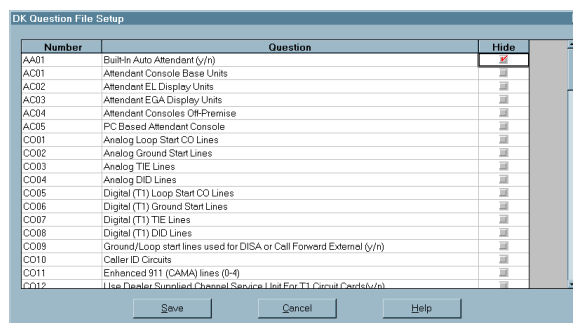
Question File Setup

The Question File Setup option enables you to hide any questions from view. If you hide a question, it does not display at any time during the quote process.

Where questions are a part of a group of questions (for example, AA01, AA01a, AA01b), only the main question, which is “AA01” in our example, is displayed on this screen. If you hide the main question, all other questions in the group are also hidden during the quote process.

► To change the question file setup

- Click Pricing from the Main Menu and Question File Setup from the drop-down menu.



3140

- Click in the Hide column, opposite any question that you want hidden.
- Click Save.

The question does not appear in the quote process.

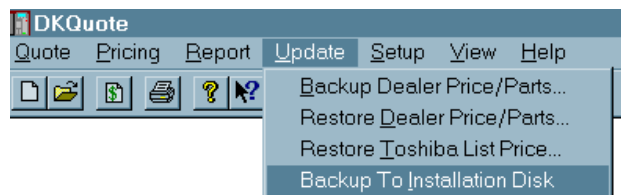
The changes are saved and the screen closes.

Update Menu

The Update Menu enables the backup of a customized dealer database, price categories, and company general information to DKQuote Installation Disk #5.

Your dealers and sales staff can use the customized disk to generate parts and prices (less hidden parts and questions) after DKQuote is installed.

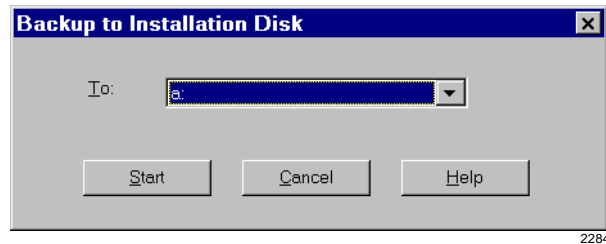
You can also use this option to copy updated information to a blank floppy disk. The updated floppy disk can be used to install up-to-date pricing and parts information on the dealer and sales staff PCs.



3141

► To backup to the installation disk

1. Click Update from the Main Menu and Backup to Installation Disk from the drop-down menu.
2. Insert Installation Disk #5 into the floppy-disk drive.
3. Select the drive (A: or B:) that contains Installation Disk #5.
4. Click Start.



The files are backed up to Installation Disk #5.

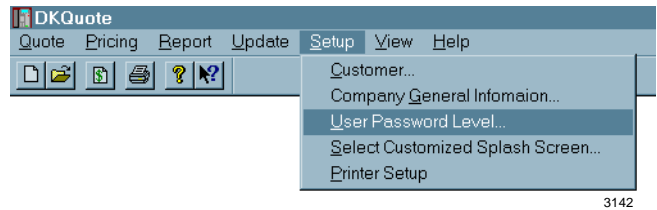
User Password Level

The Setup Menu (shown at right) enables you to setup the user password levels. There are three default levels:

- ◆ Level 1 – Master (Administrator)
- ◆ Level 2 – Sales
- ◆ Level 3 – Technical

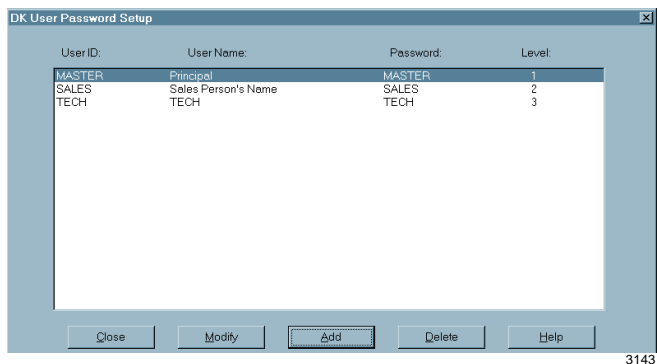
You can also add, delete, or modify user IDs, names, and passwords.

Note In DKQuote, only the Level 1 user ID can execute all functions and access all screens.

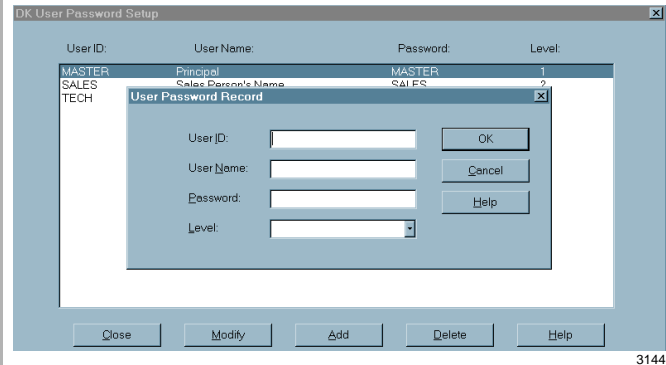


► To add a user

1. Click Setup from the Main Menu and User Password Level from the drop-down menu.



2. Click Add.



3. Enter the User ID.
4. Enter the User Name.
5. Enter the Password.
6. Enter the Level.
7. Click Close

Alphanumeric characters (up to eight maximum).

Also appears on “Prepared by” line for the Final Quote Sheet printout.

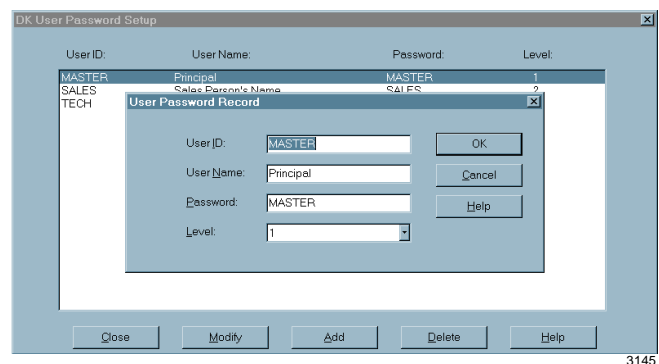
Alphanumeric characters (up to eight maximum).

A pull-down menu enables you to choose 1~3.

The changes are saved and the screen closes.

► To change user ID, password, or level

1. Click Setup from the Main Menu and User Password Level from the drop-down menu.



2. Click Modify.
3. Change the User ID.
4. Change the User Name.
5. Change the Password.
6. Change the Level.
7. Click Close.

A pop-up dialog box displays.

Alphanumeric characters (up to eight maximum).

Also appears on “Prepared by” line for the Final Quote Sheet printout.

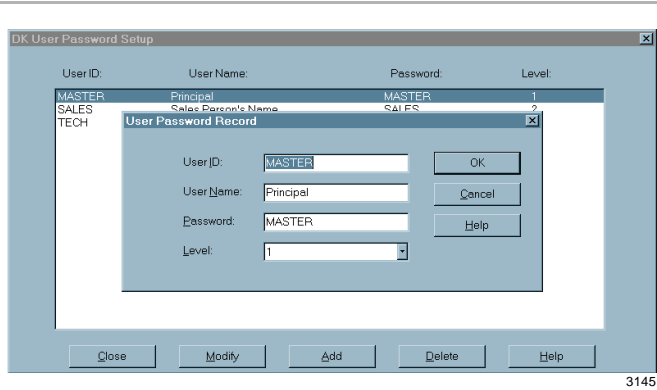
Alphanumeric characters (up to eight maximum).

A pull-down menu enables you to choose 1~3.

The changes are saved and the screen closes.

► **To delete a user**

1. Click Setup from the Main Menu and User Password Level from the drop-down menu.



2. Highlight the user ID and click Delete.
3. Click Close.

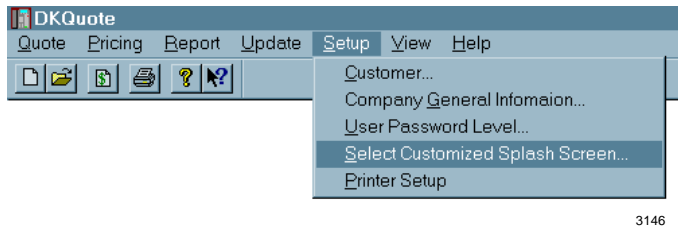
A pop-up dialog box displays asking you to confirm the deletion.

The changes are saved and the screen closes.

Customized Splash Screen

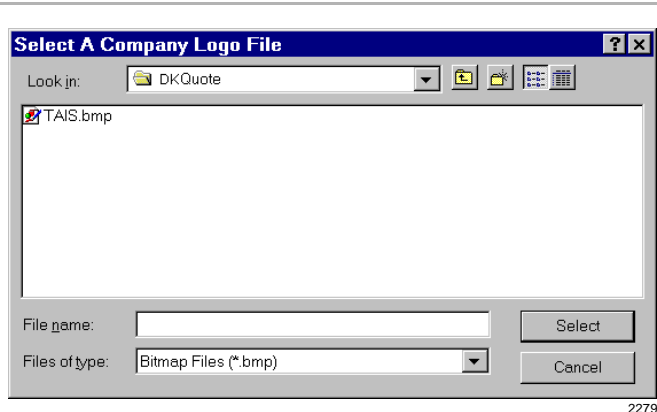
You can specify your company logo as the log ON screen instead of the Toshiba logo.

The logo can be any MS Paint® picture file (.bmp) at a recommended size of 640 x 480 pixels.



► **To change the company/system logo**

1. Click Setup from the Main Menu and Select Customized Splash Screen from the drop-down menu.



2. Highlight one of the available logos.
3. Click Select.

The file name in the File Name box.

The change is saved, the screen closes, and the logo appears on the screen at the next log ON.

Appendix – Final Quote Printout

If you selected All on the Print Quote screen, a quote cover sheet, Selection List, Parts List, Installation Charges List (if applicable), and two pages of PCB Placement Guides are printed. Examples are shown below and in the following pages.

Cover Sheet

❶

Dealer's Name
8090 Anywhere Street
Anywhere, CA 92714
(714) 832-3434

Prepared By : Mary Smith ❷	Date : 05/13/97
Prepared For : XYZ Company, Inc. ❸	Sys. Name : DK424 ❶
Contact : Frank Hugo ❸	Quote No : Example ❸
	Quote Date : 05/06/97
Total Price of Configured Parts	\$63,428.00
Total Price of Spare Parts	\$730.00
Total Price of Add On Parts	\$0.00
Parts Subtotal (Taxable)	\$64,158.00
Installation (Refer to next page)	\$8,300.00
Other Installation Charges	\$450.00
Database Preparation	\$200.00
Training	\$0.00
First Year Warranty	\$0.00
Maintenance Agreement	\$0.00
Other Hardware (Taxable)	\$0.00
Other Software (Taxable)	\$0.00
Parts Tax at Percentage Rate (8.00)	\$5,132.64
Labor Tax at Percentage Rate (0.00)	\$0.00
Total Price of This Quote	\$78,240.64

- ❶ Entered in the Company General Information screen.
- ❷ Entered in the User Password Record screen.
- ❸ Entered in the Customer Record screen when creating a quote.

Parts List (Quote Number: Example)

*	Part Number	Qty Chg	Price	Extension
E	10KEY-H DKT	2	\$0.00	\$0.00
E	10KEY-S DKT	2	\$0.00	\$0.00
R	ACD ANNOUNCER	3	\$0.00	\$0.00
A	BATTERY	2	\$0.00	\$0.00
	DDCB	1	\$115.00	\$115.00
	DK-PCATT	1	\$1,200.00	\$1,200.00
	DKSUB424	1	\$555.00	\$555.00
E	DKSUE280	1	\$0.00	\$0.00
	DKSUE424	4	\$545.00	\$2,180.00
	DKT2004CT	2	\$700.00	\$1,400.00
	DKT2010-H	40	\$135.00	\$5,400.00
	DKT2010-H(W)	40	\$135.00	\$5,400.00
	DKT2010-SD	40	\$185.00	\$7,400.00
	DKT2020-SD	20	\$225.00	\$4,500.00
	I12527	82	\$100.00	\$8,200.00
	I29911	1	\$100.00	\$100.00
	MDFB	2	\$40.00	\$80.00
	NDTU CABLE	3	\$75.00	\$225.00
	PDKU2	19	\$365.00	\$6,935.00
S	PDKU2	2	\$365.00	\$730.00
	PIOU	1	\$570.00	\$570.00
	RATU	1	\$585.00	\$585.00
	RCIS	2	\$200.00	\$400.00
	RCIU2	3	\$290.00	\$870.00
	RCOS	6	\$228.00	\$1,368.00
	RCOU	7	\$265.00	\$1,855.00
	RCTUE3	1	\$2,800.00	\$2,800.00
	RCTUF3	1	\$4,900.00	\$4,900.00
	RDTU	3	\$2,875.00	\$8,625.00
	RKYS4	1	\$3,000.00	\$3,000.00
	RMDS	1	\$150.00	\$150.00
	RPSB1	2	\$60.00	\$120.00
	RRCS-12	1	\$630.00	\$630.00
	RSIS	1	\$100.00	\$100.00
	RSIU	1	\$280.00	\$280.00
	RSTU2	3	\$595.00	\$1,785.00
R	STANDARD TELSET	20	\$0.00	\$0.00
R	X-PROTECTOR LO	4	\$0.00	\$0.00
Total Parts:				\$64,158.00

S = Spare or Additional Parts

A = Optional Add-on Parts, not supplied by Toshiba

E = Existing and/or Special Priced Parts

R = Required Add-on Parts, not supplied by Toshiba

Installation Charges

Installation Description	Qty	Price	Extension
Cable Runs	82	\$100.00	\$8,200.00
External Paging System	1	\$100.00	\$100.00
Installation Charges:			\$8,300.00

PCB Placement Guide

Cabinet 1 (Type: DK424*)	R11	RCTU	S11	S12	S13	S14	S15	S16
PCB Type	RCTUE3	RCTUF3	RSIU	PDKU2	PDKU2	PDKU2	RCOU	RCOU
Port Nos.				000 - 007	008 - 015	016 - 023		
Line Nos.							001 - 008	009 - 016
Option/Note	RRCS-12		Table 3	DDCB			RCOS	RCOS
Cabinet 2 (Type: DK280*)	S21	S22	S23	S24	S25	S26	S27**	S28**
PCB Type	RCOU	PDKU2	PDKU2	PDKU2	RCOU	RCOU	XXXXX	XXXXX
Port Nos.		024 - 031	032 - 039	040 - 047				
Line Nos.	017 - 024				025 - 032	033 - 040		
Option/Note	RCOS				RCOS	RCOS		
Cabinet 3 (Type: DK424*)	S31	S32	S33	S34	S35	S36	S37**	S38**
PCB Type	RCOU	PDKU2	PDKU2	PDKU2	RCOU	PDKU2	PDKU2	PDKU2
Port Nos.		048 - 055	056 - 063	064 - 071		072 - 079	080 - 087	088 - 095
Line Nos.	041 - 048				049 - 052			
Option/Note	RCOS							
Cabinet 4 (Type: DK424*)	S41	S42	S43	S44	S45	S46	S47**	S48**
PCB Type	PDKU2	PDKU2	PDKU2	PDKU2	PDKU2	PDKU2	RDTU	Vacant
Port Nos.	096 - 103	104 - 111	112 - 119	120 - 127	128 - 135	136 - 143	144 - 167	
Line Nos.							053 - 076	
Option/Note							24-D	
Cabinet 5 (Type: DK424*)	S51	S52	S53	S54	S55	S56	S57**	S58**
PCB Type	PDKU2	RSTU2	RSTU2	RSTU2	RATU	Spare	RDTU	Vacant
Port Nos.	168 - 175	176 - 183	184 - 191	192 - 199	200 - 203		204 - 227	
Line Nos.							077 - 100	
Option/Note							24-D	
Cabinet 6 (Type: DK424*)	S61	S62	S63	S64	S65	S66	S67**	S68**
PCB Type	Spare	Spare	RCIU2	RCIU2	RCIU2	PIOU	RDTU	Vacant
Port Nos.							228 - 299	
Line Nos.			001 * 008	009 * 016	017 * 020		021 - 044	
Option/Note			RCIS	RCIS		Table 3	24-D	
Cabinet 7 (Type: NR*)	S71	S72	S73	S74	S75	S76	S77**	S78**
PCB Type								
Port Nos.								
Line Nos.								

* Type = DK280, DK424, or NR (not required)

** Cabinets 2-7: Last two slots are available on the DK424 using RCTUE/F processor with MBJU removed.

*** EOCU/AMP/HDSB

Notes

- Check Worksheet 5 - System Power Factor Check in the DK424 Configuration section of the *Strata DK I/M Manual*.
- Maximum Digital Telephone per Cabinet = 62.
- Maximum Digital Telephone with RPCI per Cabinet = 40.

- Refer to [Table 1](#) and [2](#) on the following page for Designated Speaker OCA, DIU, RPCI and T1 slots.
 - DK424 requires PDKU2 PCBs that support Speaker Off-Hook-Call-Announce (OCA) and PDIU-DS/RPCI-DI data applications be placed in the designated slots shown in [Table 1](#) and [2](#) on the following page. Handset OCA and RPCI-DI TAPI applications can operate in any slot.
 - RDTU PCBs must be placed in designated slots per [Table 1](#) and [2](#) on the following page, the next higher slot adjacent to the RDTU must be vacant to enable channels 17~24 to operate.
- Always calculate the system power factor using the DK424 configuration worksheets when installing older electronic telephones or RPCI-DI interface units. See the *Strata DK I/M Manual*, DK424 Configuration section for Power Factor Worksheets. Worksheets.

Table 1 DK424 Base with RCTUE/F with MBJU Removed

Cabinet	PDKU2 Data & Speaker OCA Slots	RPTU or RDTU Vacant = XX/YY*
Cab1 = DK424	11, 12, 13, 14, 15, 16	13*/14** 15*/16**
Cab2 = DK280	21, 22, 23, 24, 25, 26	21*/22** 23*/24** 25*/26**
Cab2 = DK424	21, 22, 23, 24	21*/22** 23*/24**
Cab3 = DK280	31, 32	31*/32**
Cab3 = DK424	31, 32, 37, 38	31*/32** 37*/38**
Cab4 = DK280	41, 42	41*/42**
Cab4 = DK424	41, 42, 47, 48	41*/42** 47*/48**
Cab5 = DK280	61, 62	51*/52**
Cab5 = DK424	51, 52, 57 58	51*/52** 57*/58**
Cab6 = DK280	61, 62	61*/62**
Cab6 = DK424	61, 62, 67, 68	61*/62** 67*/68**
Cab7 = DK280	Cannot be 7th Cabinet	
Cab7 = DK424	no Data & Speaker OCA	none

* RDTU or RPTU can only be installed in XX; Slot YY must be vacant if RPTU or RDTU is installed and if channels 17-24 are operational.

** Vacant Slot

Table 2 DK424 Base Cabinet with RCTUA, BA/BB, C/D with MBJU or DK280 Base with RCTUA, BA/BB, C/D, or E/F

Cabinet	PDKU2 Data & Speaker OCA Slots	RPTU or RDTU Slots
Cab1 = DK280 or DK424	11, 12, 13, 14, 15, 16	13*/14** 15*/16**
Cab2 = DK280 or DK424	21, 22, 23, 24, 25, 26	21*/22** 23*/24** 25*/26**
Cab3 = DK280 or DK424	31, 32	31*/32**
Cab4 = DK280 or DK424	41, 42	41*/42**
Cab5 = DK280 or DK424	51, 52	51*/52**
Cab6 = DK280 or DK424	61, 62	61*/62**

Table 2 Interface Port Assignments

	RSIU	RSIS	RMDS	PIOU	PIOUS	IMDU	RSSU
SMDR				S66			
SMIS	S11	S11					
SMDI				S66			
DKADMIN	S11		S11				
OAI	S11						

Selection List (Quote Number: Example)

Selection No.	Selection	Selection Descriptions
Auto Attendant (Built-In)		
AA01	NO	Built-in Auto Attendant (y/n)
Attendant Consoles		
AC01	0	Attendant Console Base Units
AC02	0	Attendant EL Display Units
AC03	0	Attendant EGA Display Units
AC04	0	Attendant Consoles Off-Premise
AC05	0	PC Attendant Console
CO Lines		
CO01	50	Analog Loop Start CO Lines
CO02	0	Analog Ground Start Lines
CO03	0	Analog Tie Lines
CO04	0	Analog DID Lines
CO05	0	Digital (T1) Loop Start CO Lines
CO06	0	Digital (T1) Ground Start Lines
CO07	0	Digital (T1) Tie Lines
CO08	50	Digital (T1) DID Lines
CO09	NO	Ground/Loop start lines used for DISA or Call Forward External (y/n)
CO10	20	Caller ID Circuits
Digital Telephones		
DT001	10	1 Key Gray Digital Telephones
DT002	5	1 Key White Digital Telephones
DT01	40	10 Key-H Gray Digital Telephones
DT02	40	10 Key-H White Digital Telephones
DT03	40	10 Key-SD Gray Digital Telephones
DT04	0	10 Key-SD White Digital Telephones
DT05	0	20 Key-S Gray Digital Telephones
DT06	0	20 Key-S White Digital Telephones
DT07	20	20 Key-SD Gray Digital Telephones
DT08	0	20 Key-SD White Digital Telephones
DT09	0	Gray 20 Key Add-on Modules
DT10	0	White 20 Key Add-on Modules
DT11	0	Gray Digital 60 Key DDSS Consoles
DT12	0	White Digital 60 Key DDSS Consoles
DT13	0	Stand-alone PDIU-DS
DT14	2	Door Telephones connected to DDCB (Digital)
DT15	0	Door Locks connected to DDCB and HDCB
DT16	2	Digital Telephones/Devices Off-Premise
DT17	0	Digital Telephones requiring Speaker OCA
DT18	0	Hot Prewired Digital Telephone Ports
DT19	0	Integrated RPCI-DI for Gray Telephones
DT20	0	Integrated RPCI-DI for White Telephones
DT21	2	Cordless Telephones sharing Digital Port
DT22	0	Stand-alone Cordless Telephones
DT23	0	PC Digital Telephones with Handset/Cradle
DT24	0	PC Digital Telephones without Handset/Cradle
Electronic Telephones		

Selection No.	Selection	Selection Descriptions
ET01	0	10 Key-H Electronic Telephones
ET02	0	10 Key-H(W) Electronic Telephones
ET03	0	10 Key-S Electronic Telephones
ET04	0	10 Key-S(W) Electronic Telephones
ET05	0	20 Key-H Electronic Telephones
ET06	0	20 Key-H(W) Electronic Telephones
ET07	0	20 Key-SD Electronic Telephones
ET08	0	20 Key-SD(W) Electronic Telephones
ET09	0	Gray Electronic 60 Key HDSS Consoles
ET10	0	White Electronic 60 Key HDSS Consoles
ET11	0	Door Telephones connected to HDCB (electronic)
ET12	0	Door Locks connected to HDCB (electronic)
ET13	0	Electronic Telephones requiring OCA Pull HVSUs
ET14	0	Two CO Line Conference Amplifiers
ET15	0	Electronic Telephones/Devices Off-Premise
ET16	0	Alternate BGM Source connected to Electronic Circuit
ET17	0	Hot Prewired Electronic Telephone Ports

Configuration Options

FG01	0	Guaranteed Spare Slots
FG02	YES	Use PESU in Place of RSTU/PEKU (y/n)
FG03	YES	Use RDSU/RSTS in Place of PDKU/RSTU2 (y/n)
FG04	NO	Substitute Configured RCTU PCB with Larger RCTU for Future Growth (y/n)
FG05	NO	RDTU T1 Slot Configuration Options (y/n)
FG06	NO	Optimize Last Installed RDTU (y/n)
FG07	YES	Station PCB and Ground/loop Start Line PCB Configuration Options (y/n)
FG07a	NO	All Station PCBs other than All Line PCBs (y/n)
FG07b	NO	Distribute 2 Station PCBs then 2 CO Line PCBs (y/n)
FG07c	YES	Distribute 3 Station PCBs then 3 CO Line PCBs (y/n)
FG07d	NO	Distribute 4 Station PCBs then 4 CO Line PCBs (y/n)

Miscellaneous

MO01	0	HESB AMP/Speaker for Loud Ringing
MO02	0	HESB AMP/Speaker for External Page Amplifiers
MO03	0	Headsets Required
MO04	2	AC Cords allowed per Local Electric Code (1 or 2)
MO05	NO	Reserve Battery Backup Power (y/n)
MO06	YES	KSU Wall Mounted (y/n)
MO07	YES	Quote Selects Paging, Admin, SMDI, SMDR, SMIS & OAI Option PCBs (y/n)
MO07aa	NO	Unamplified or Amplified Paging + NT Relay Interface without/Alarm Sensor (y/n)
MO07ab	NO	Unamplified Paging + NT Relay Interface without Alarm Sensor (y/n)
MO07ac	YES	Unamplified or Amplified Paging + NT Relay Interface without Alarm Sensor (y/n)
MO07ad	NO	Four Zone Paging + NT Relay Interface (y/n)
MO07ae	NO	Eight Zone Paging + NT Relay Interface (y/n)
MO07b	YES	SMDR Interface (y/n)
MO07c	YES	SMDI Interface (y/n)
MO07d	YES	MIS for ACD Interface (y/n)
MO07e	YES	Remote Maintenance Interface (y/n) - required for RCTU C/D & E/F
MO07ea	NO	Local and/or External Modem Admin PC Interface (y/n)
MO07eb	NO	Built-in 1200bps IMDU Modem for Remote Admin PC Interface (y/n)

Selection No.	Selection	Selection Descriptions
MO07ec	YES	Built-in 2400bps RMDS Modem for Remote Admin PC Interface (y/n)
MO07f	YES	System Open Architecture Interface (R3.2) (y/n)
MO08	NO	User Selects Paging, Admin, SMDI, SMDR, SMIS & OAI Option PCBs (y/n)
MO09	NO	ACD without MIS (y/n)

Strategy DK

SD01	NO	Strategy DK Voice Mail/Auto Attendant (y/n)
------	----	---

Standard Telephones

ST01	20	Standard Telephones
ST02	0	Standard Telephone Circuits (Ports) requiring OPS (R48S) Loops
ST03	0	External Modem or Fax Devices
ST04	0	External VM/Auto Attendant Ports
ST05	0	Power Failure Standard Telephones
ST06	0	Other Devices requiring Standard Ports
ST07	0	Standard Telephones/Devices Off-premise
ST08	0	Alternate BGM Source Connected to Standard Circuit
ST09	0	Total Number of Hot Prewired Standard Telephone Ports
ST10	3	ACD Digital Announcers Required

DTMF Receivers

TT01	12	Number of DTMF (RRCS) Circuits - Max. 24 DTMF Receivers
------	----	---

Index

A

about this guide
 organization, [iii](#)
 related documentation, [v](#)
account category, [26](#)
add on parts, [55, 56](#)

B

basic operations
 additional parts, [10](#)
 existing parts, [10](#)
 final quotation, [10](#)
 future parts, [10](#)
 installation charges, [10](#)
 keyboard navigation, [13](#)
 mouse navigation, [13](#)
 on-line help, [14](#)
 status bar, [12](#)

C

cat07~cat10
 customized prices, [48, 50](#)
 profit margins, [48](#)
category pricing, [47](#)
configuration conflict message, [15](#)
configured parts list, [37](#)
 pcb placement guide, [37](#)
customized data, [47](#)
customized splash screen, [64](#)

D

dealer
 cat07~cat10, [48](#)
 cost, [48](#)
 installation, [60](#)
 markup, [48](#)
 price, [48](#)

delete quote, [41](#)

E

existing parts, [30](#)

F

final quote
 printout, [65](#)

G

general service administration, [47, 48](#)

H

help
 on-line help, [14](#)

I

installation
 before you begin, [17](#)
 charges, [33](#)
 dealer, [60](#)
 install DKQuote, [17](#)
 national accounts, [59](#)

K

keyboard navigation, [13](#)

L

list
 price, [38](#)
logging
 off, [22](#)
 on, [21](#)
logo, [64](#)

M

menu

- configuration conflict message, 15
- main
 - options, 8
- pricing, 38, 47
- report, 39
- setup, 44
- warning messages, 16

messages

- configuration conflict, 15
- warning, 16

mouse navigation, 13

N

national accounts

- installation, 59
- mfg, 47, 48
- schedule a/c, 47, 48

new

- equipment selection, 28
- existing parts, 29

new quote, 25

O

obsolete parts, 59

optional add on parts, 56

P

parts

- add on, 55
- configured parts list, 37
- existing, 30
- obsolete, 59
- optional add on, 56

price

- cat07~cat10, 48
- category, 51
- dealer, 48
- dealer cost, 48
- dealer markup, 48
- definitions, 48
- GSA, 48
- list, 48
- menu, 47
- national accounts, 48
- screen, 48
 - column sorting, 49
 - special pricing section, 50

pricing

- account category, 26

- category, 47
- general service administration, 47
- list, 38
- national accounts, mfg, 47
- national accounts, schedule a/c, 47
- regular account dealer column, 47

print quote, 41

Q

question file

- setup, 61

quote

- delete, 41
- final quote printout, 65
- generating, 22
- installation charges, 33
- navigate screen, 14
- new, 25
- print, 41
- save, 41
- transfer in, 32
- transfer out, 32
- using existing parts, 30

quotes, 28, 29

- equipment selection, 24
- existing parts, 24
- final quote worksheet, 24, 35
- new, 24

R

regular account dealer column, 47

required add on parts, 55

S

save quote, 41

screen

- message, 15
- price, 48
 - column sorting, 49
 - special pricing section, 50
- quote, 14

setup

- dealer installation, 60
- national accounts installation, 59
- obsolete parts, 59
- optional add on parts, 56
- parts/price, 52
- price category, 51
- question file, 61

required add on parts, [55](#)

T

the grand tour, [10](#)

basic operations, [9](#)

existing parts, [10](#)

IDs, [7](#)

main menu, [11](#)

passwords, [7](#)

screen

 variations, [12](#)

toolbar, [12](#)

user levels, [7](#)

transfer

 in, [32](#)

 out, [32](#)

V

viewing

 configured parts list, [37](#)

W

warning message, [16](#)

TOSHIBA

Toshiba America Information Systems, Inc.
Telecommunication Systems Division
9740 Irvine Boulevard, Irvine, CA 92618-1597
<http://telecom.toshiba.com>